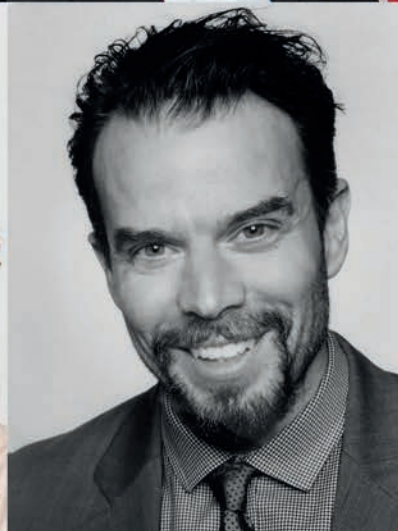


Floreat Domus



Thanks to you, our donors, Queens' now leads collegiate Cambridge in philanthropic endeavour



Andrew Dockett, the first President of Queens'

In a very challenging time, Cambridge University-wide data show that Queens' has come in at the top of the 31 colleges for philanthropic income in the last financial year, ending 30th June 2020.

This is a "first" for the College and it marks a major change in our historical track record: we have averaged about seventh place over the last ten years, starting from 13th place in 2010.

THANK YOU.

None of this would have been possible without you. It is your incredible support to date that has helped us in our multi-year efforts to support the teaching, learning, research and fabric of the College in a much more resilient and transformational manner.

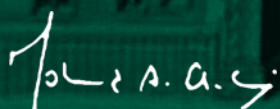
Thanks to your philanthropy over the last few years, we have now endowed a third of the supervision system through Fellowships, created new funds for student hardship and on-going needs and we have the chance to develop our long-held student centre at Owlstone Croft.

The indirect impact on Queens' is also crystal clear. Through leading by example, you have helped send a very clear message about community support. Never has such a message been so important, and resonated so much, as during this horrible Covid-19 shock.

As proud as we are of what you have enabled, we realise that there is still a very tough road ahead. The pandemic has hit our cash reserves to the tune of £4.5 million; not all sources of disrupted revenues are likely to come back quickly; we have to provide far better for our 430 postgraduate students in particular; Covid-related needs continue, with an increasing number starting to take a longer-term dimension; our access and widening participation initiatives are under pressure at a time when there is even greater need for them; and, in terms of longer-term resilience, our endowment should ideally be at least double what it is at the moment (£95 million), to support our position as the fourth largest college. This will help us withstand the future shocks that may come our way.

This reality is accelerating our internal work on five important strategic initiatives that speak directly to maintaining and improving our intellectual society as a means of providing transformational opportunities in the context of a friendly, inclusive and diverse community.

Floreat Domus!



Dr Mohamed El-Erian
President



Mr Rowan Kitt
Development Director & Fellow



The Openshaw Prize, in memory of **Tom Openshaw (1953-1973)**

A lasting family legacy at Queens'

Tom Openshaw (1970) lived life to the full. A talented mathematician, he was offered a scholarship to Queens' at a young age, based on his school record.

He took a gap year before coming to Cambridge, flying to India to meet a friend there. Unfortunately, his arrangement letter had not got through. Unfazed, he took a taxi to the centre of New Delhi and, by an amazing stroke of fortune, bumped into his contact there. His journey back home was equally adventurous, driving through much of Iran and Iraq by Land Rover.

Upon arrival at Queens', he excelled both academically and in extra-curricular endeavours; he received first-class marks, ran the College Squash Club and was the driving force behind setting up the College Climbing Club.

A charming character, Tom was well-liked and much admired at College. He was always beaming and knew exactly how to calm down any argument or disagreement.

In December 1973, shortly after completing his third year, Tom was tragically killed in a climbing accident at Bosigran Crags on the North Cornwall coast.

The Openshaw family endowed a prize in Mathematics at Queens' in Tom's name. *The Openshaw Prize* was first awarded in 1973 and there have been at least 45 recipients over the years. They include **Dr Ruth Hendry** (the first female Senior Wrangler), **Professor Peter Haynes** (Fellow) and **Dr Claude Warnick** (Fellow).



Professor Peter Haynes



Dr Ruth Hendry

Winners of *The Openshaw Prize*

1974	T. P. Schofield
1975	R. J. Knight
1976	C. F. Ross
1977	J. W. Tate
1978	P. H. Haynes
1979	P. D. Newth
1980	T. C. Carden
1981	N. G. Walker
1982	A. S. Lewis
1983	P. M. Bruce
1984	E. G. Levy
1985	D. N. Moore
1986	
1987	J. A. Sherratt
1988	S. M. Paton
1989	A. Bhattacharyya
1990	S. G. Llewellyn Smith
1991	R. Hendry
1992	M. J. Prickett
1993	P. R. Collins
1994	T. J. Hunt
1995	P. J. Outram
1996	I. P. Langslow
1997	M. S. Hains
1998	R. J. Davies
1999	M. R. Shinwell
2000	M. W. Rogers
2001	E. G. Baring
2002	V. C. Nudd
2003	C. M. Warnick
2004	B. P. Collie
2005	D. A. C. Harrison
2006	N. Vellodi
2007	H. Zhang
2008	J. D. Cadney
2009	D. J. Whelan
2010	H. G. W. Dietert
2011	Y. Zhu
2012	D. H. Phillips
2013	J. M. F. Tsang
2014	J. I. Rawlinson
2015	D. Heydecker
2016	B. B. He
2017	E. S. Guo
2018	D. O'Brien
2019	J. Remo
2020	C. Gilson

The Postgraduate Vision



Led by the President, a key ambition is that Queens' becomes the College of choice for postgraduate students from access backgrounds.

To achieve this, the College wants to:

- Transform access to postgraduate study by creating “clusters” of postgraduate scholarships. These will include targeted support for fees and maintenance, alongside full-ride studentships to change how students, especially those from access backgrounds, view the possibility of continuing with postgraduate research.
- Make Owlstone Croft one of the best College sites in Cambridge, with great facilities for living and studying.
- Support students in their postgraduate careers through mentoring and providing pathways through the endowed *Chris Rokos PDRA Programme* and perhaps the creation of new Junior Research Fellowships.

The Alexander Crummell Scholarships

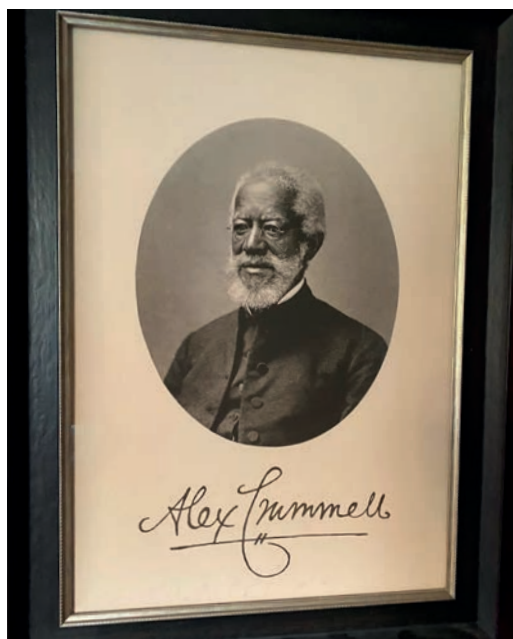
We have made important progress towards the first of these through the creation of *The Alexander Crummell Scholarships*. One set of donors have established a cluster under this banner of six Master's scholarships in science-based subjects for UK-domiciled students. They provide full funding, covering fees and living expenses, as well as mentoring from Queens' Fellows and support for the recipients as they apply for further academic courses or employment.

Using this as a catalyst, another donor (**Chris Rokos, Fellow Benefactor**) has come forward to build on this initial cluster with a gift to create six PhD scholarships, widening the scope to include all STEM subjects.

These awards will be made with a preference **for addressing under-representation of students identifying as Black or Black-Mixed ethnicity.**

The first scholarships will be awarded either in 2021 or 2022; we are now advertising for both the 2022-23 and 2023-24 academic years. Further clusters will be created addressing different subjects and groups of candidates.





About Alexander Crummell

Alexander Crummell (1819-98) came from a very tough background, became a student at Queens' and was the first black person to receive a degree from the University of Cambridge.

Crummell's legacy is being celebrated not only through these scholarships, but also *The Alexander Crummell Fund* that has been established by the University. The Fund will support initiatives to support students of colour at the University, in the first instance launching the Black Student Advisory Hub, which is being run from the Cambridge Centre for Teaching and Learning. **Dr Graham Denyer Willis** is a member of the action group that will recommend expenditure from the Fund, which includes students, staff and academics from across the University.



The house where Crummell lived on Botolph Lane.

Recent postgraduate fundraising

Stamps Scholarships

We are delighted to be welcoming our second intake of Stamps Scholars this October. This programme, generously supported by **The Strive Foundation**, seeks to attract the most promising PhD candidates from the United States and foster their development as scholars, leaders and citizens of the world, through purposeful programming, mentoring and enhanced educational opportunities.

These scholarships make a significant contribution to fees and maintenance costs and also provide extra funding opportunities for enrichment activities, such as studying or volunteering abroad, conducting research or participating in a leadership programme or academic conference.

Our 2021 Stamps Scholars are:



Adam Barton (Education)



Mercedes Cornelius (Physics)



Ian Boyd (Modern & Medieval Languages – French)



Austin McCraw (Divinity)



Janet Chang (Engineering)



Molly Rottman (Education)

The COVID-19 Student Support Fund

Donations from alumni, Fellows and friends of the College have raised more than £300,000 to support our students affected by this crisis throughout this academic year.

Of that, nearly £30,000 is *The Mairi Hurrell Fund*, designated for expert treatment to support mental and physical welfare, named after former College nurse and Honorary Fellow **Mairi Hurrell**.

£130,000 of the Support Fund has been spent so far and we anticipate continued expenditure from the fund to meet students' needs over next term and beyond as we deal with the prolonged impact of the pandemic, with expenses covered including:

- Assistance with accommodation and living costs
- Enhanced bursaries: Queens' currently supports a third of our undergraduates and we expect demand to rise
- Provision for remote learning, including IT equipment and software, plus online subscriptions and books
- Assistance with increased travel costs

In January the President, Head of Welfare, Development Director, Senior Tutor and Financial Tutor of Queens', as well as a current student, had the opportunity to speak with and thank some of the donors to this important Fund and pass on messages from students who are receiving support:

"Being a single parent for two young children no longer in normal school, has been the biggest impediment to my work during the COVID-19 pandemic. It was very difficult and stressful to manage home-schooling and do my own work, especially with only one working computer. I contacted my tutor seeking help and the following day I received a new laptop.

This was not the first time they were there for me; they helped me last year by providing me with better internet connection and delivering a new studying chair, to meet my long hours working requirement.

We are all going through stressful times, but I am lucky enough to be part of the Queens' College family."

An anonymous postgraduate student in receipt of funding from the Student Support Fund

The Fund remains open and we are most grateful for all donations. Additionally, any donations made from new donors to the College or those whose last gift was made before 31st July 2018 may be eligible to have their impact doubled through the Harding Challenge.

"I would just like to say thank you to everyone who has contributed to this Fund. Its support has been vital for me completing assessments in summer 2020 and taking part in a fully-remote Lent term 2021. On top of this, the support meant I was able to stay in contact with everyone at College and in my sports team in different ways, ranging from study sessions over zoom to online workouts with the University Hockey Club (of which I am the Captain this year).

I first received support from the Fund in exam term 2020. My internet connection at home has always been intermittent and doesn't extend very far, but I was able to get a wi-fi extender through the Fund, enabling me to complete all my online work and stay connected to the College. The JCR and Welfare team from Queens' put on a number of events – quiz night, movie nights, online library sessions, etc – making it possible to feel part of College, from home. And all academic staff were very communicative about the format for assessments, and the support that was available from College.

I was lucky enough to be back in Cambridge last Michaelmas but I am now back at home. Support and activities from the College have continued to be great, and recently I received a monitor through the Fund, which has been invaluable for completing a more lecture-heavy term from home.

This Fund has had a far-reaching impact across all Queens' members; on behalf of all of us, thank you."

Frankie Harley (2019)

"I received financial support for accommodation and living costs as I am technically financially independent but not eligible for any bursaries. As my internship last year was cancelled due to COVID, I have much less than I had anticipated to support myself. The Student Support Fund has lifted this financial stress and has allowed me to better concentrate on my studies without having to worry about basic necessities."

An anonymous undergraduate recipient of this funding

"I came up with a disability and in need of financial support. Queens' motto that money or circumstances will never be a barrier to a student with potential was in place for me even then. I was supported financially and with support for my disability. This is why I choose to support Queens' all this time later."

Robin Millar CBE (1970), a donor to this Fund



Why donate, why now, why Queens’?

I am very happy to have made a donation to the College’s Student Support Fund, and to make it in the memory of **Gerry Blackwell (1960)**, my housemaster many years ago and before that, a rugby playing ‘Roo at Queens’. Student hardship comes in many forms: Gerry was instrumental in helping me with scholarships and bursaries that enabled me to stay on at school and apply to Queens’ when otherwise family circumstances would have prevented it.

And that is the key point: there are students today who have worked hard, in much tougher circumstances than I ever had, and have made it into Cambridge against a backdrop of economic fragility and all the difficulties that brings. These students have done the hard-yards, and must not be allowed now to fail through lack of financial resources: they must be given the opportunities to gain the Cambridge education they have worked for, to contribute to the College and yes, as a result to help their families and communities including Queens’ in the future.

If they do fail the Tripos, it should be because they drank too much in the College bar, were too busy writing the next great British novel, or

designing a quantum computer in the A.D. Brown Reading Room. It should never be because Covid has put them in such severe financial straits that they cannot afford to attend lectures.

I am delighted that Queens’ has made such an effort to support those students who really need it, and that the Harding fund is there to match our donations. Cambridge offers an elite education to those who can gain admission, and Queens’ does a great job in opening up that opportunity to as wide a pool of applicants as possible. But we have to be aware that many simply cannot afford to take that opportunity. If we can help them, then we do a great deal to ensure that while the education remains elite, the opportunity is available to all.

From first-time donor **Richard Waddington (1988)**



No. of Legacy
Society
Members*

457

No. of 1448
Society
Members*

1,681

Matric year of
the oldest
living donor

1939

Most recent
matric year
with a donor

2019

One of the
largest single
gifts this century

£8M

No. of donors
2019/20

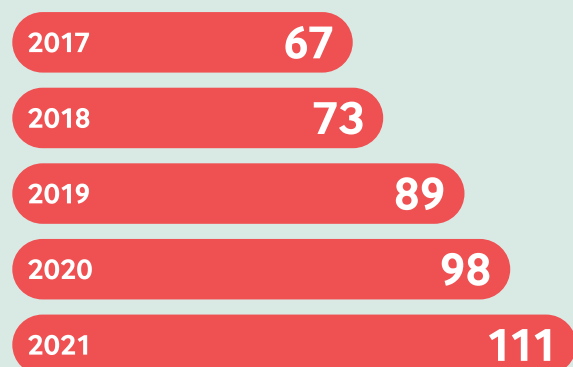
1,542

No. of donors
so far 2020/21

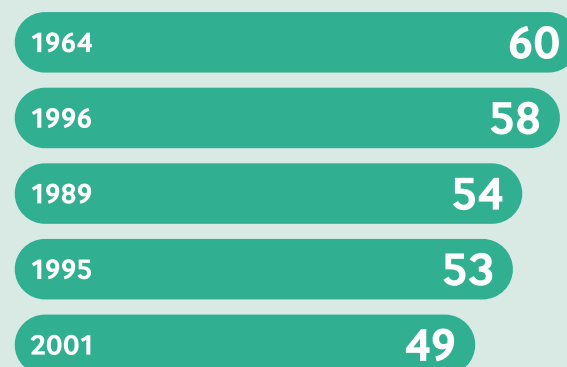
1,408

as of 25 March 2021

Eligibility for the Benefactors' Feast



Top giving years by number of donors



* The Arthur Armitage Society, including all alumni and friends of Queens' who have told the College they plan to make a gift in their Will. The 1448 Society includes all those who make a regular gift to Queens'.