

Explanation of Anomalous Households

“Anomalous households” are households which do not fit neatly into any of the ballot options in the main ballot. This includes 4 households in Dokett, 1 in Fisher, 3 in Cripps, and 4 sharing sets in Old Court.

Because of this, Queens’ is trying to fill them before the main ballot, by asking groups of people who are interested to apply. These rooms/households will be filled by randomly drawing from applications (in order of household number).

- If you apply and are successful, then congratulations, you have rooms for next year! You don’t need to do anything else
- If you apply and are unsuccessful, then you can enter the regular ballot the following week like everyone else - so there is no restriction on how you can ballot. You do not need to ballot with the same group you use to apply for anomalous households (indeed, you can apply for an anomalous household with friends and then end up balloting on your own).

Applying for anomalous households is **completely optional**.

The next 4 pages detail the households/rooms you can apply for, before the main ballot.

If you would like to apply, send an email to Donna, the Queens’ Accommodation officer (rooms@queens.cam.ac.uk) with the details of your group, cc’ing jcr-accommodation@queens.cam.ac.uk. You can only apply in **one** group/group size.

Conall Moss, JCR Accommodation Officer
Andrew Bainbridge, Queens’ Domestic Bursar
Donna Pullen, Queens’ Accommodation Officer

OPTION A - for groups of 5
Households 14 (Q7-Q11), 15(Q12-Q16), 22 (S5-S9), 23 (S10-S14)
Dokett

Details:

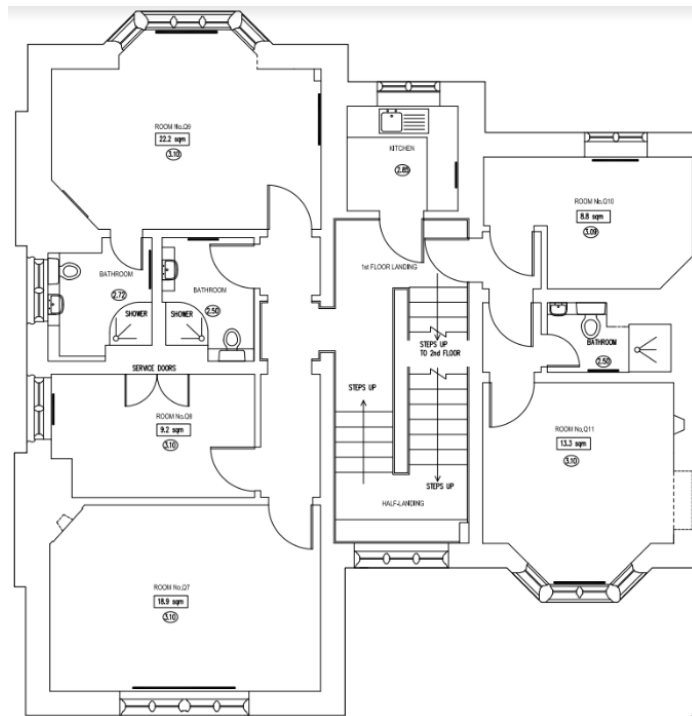
These are 4 households of 5 rooms, on the first and second floors of the Dokett Building's Q and S staircases. There is one gyp. There is/are:

-
- One en-suite room in the D band.
- Two band A rooms
- Either two band C rooms on the 1st floor, or one band C and one band B room.

Applying:

If you are interested in any of these households, please give the price bands (A, A, B/C, C, D) next to each of the names and CRSid of the group. You may apply to all four households or a subset - the nature of the random draw means that applying to more households increases the chance of getting one.

Example floor plans:



OPTION B - for groups of 6
Household 34 (W5-W9a)
Fisher

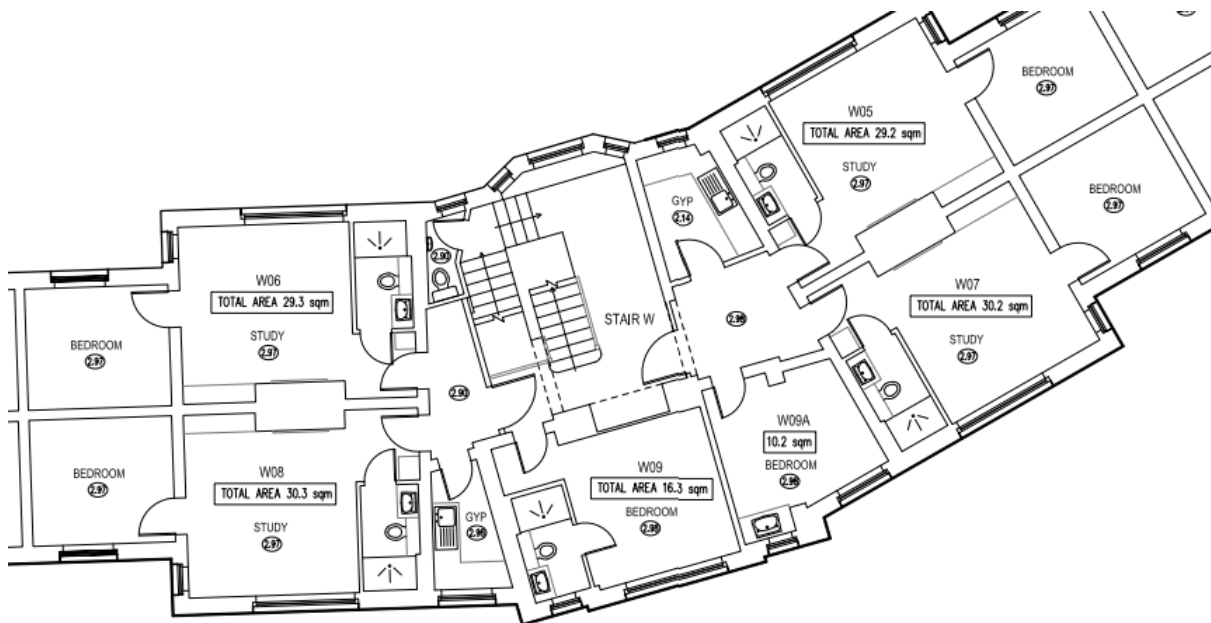
Details:

The first floor of the W Staircase. A household for 6 containing 4 Fisher sets (W5-W8, band E), one en-suite bedroom (W9, band C) and one smaller bedroom (W9a, band B) with a private WC (on the landing between floors 0 and 1) and a private shower (on the landing between floor 1 and 2). This household has 2 small gyp rooms.

Applying:

Please give the room numbers (W5, W6, W7, W8, W9, W9a) next to each of your group members.

Floor Plans:



OPTION C - for pairs in shared Old Court sets
Household 1 (A3) and Household 2 (B3, B4, B6)
Old Court

Details:

A shared twin room between two in Old Court. There are 4 of these in College:

- A3, B3, B4, B6: price band F+

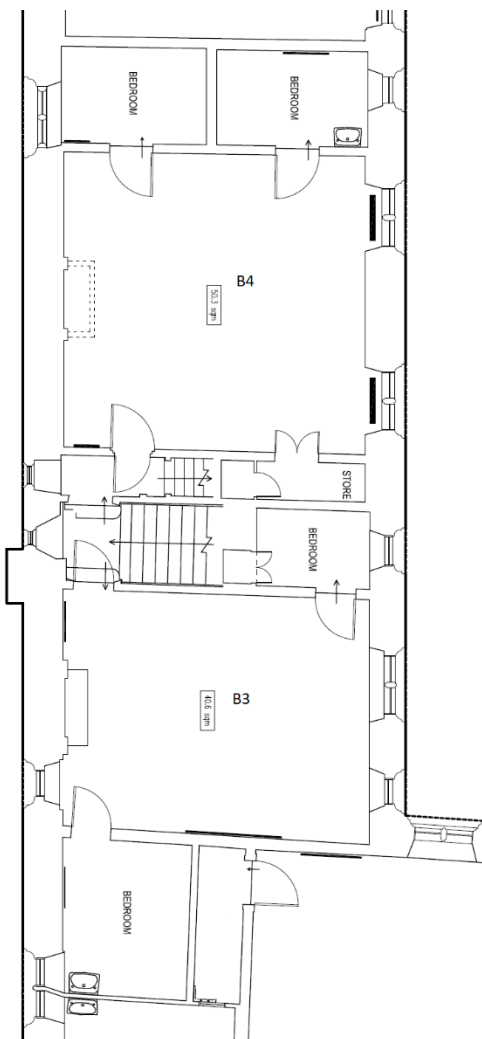
Since the main room ballot doesn't account for sharing sets, these are all being allocated in the anomalous ballot. The other Old Court non-shared rooms will be in the main ballot.

Applying:

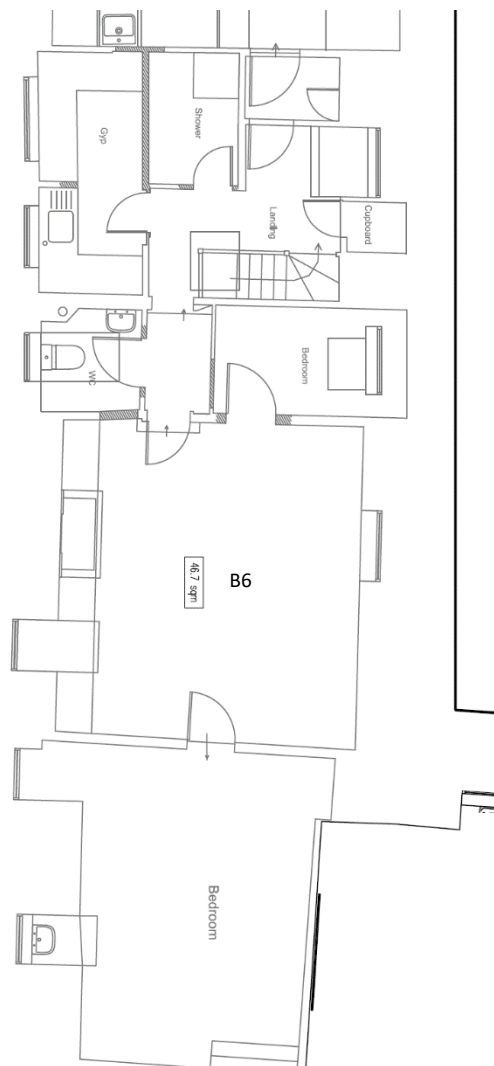
You can apply to all of these rooms or a subset - give the details of the two people applying for the room. The nature of the random draw means that applying to more rooms increases the chance of getting one.

Floor Plans:

B3 and B4 – First Floor

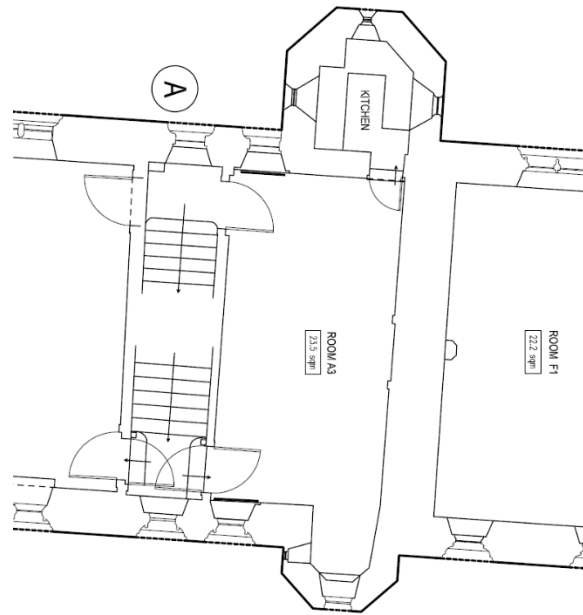


B6 – Second Floor

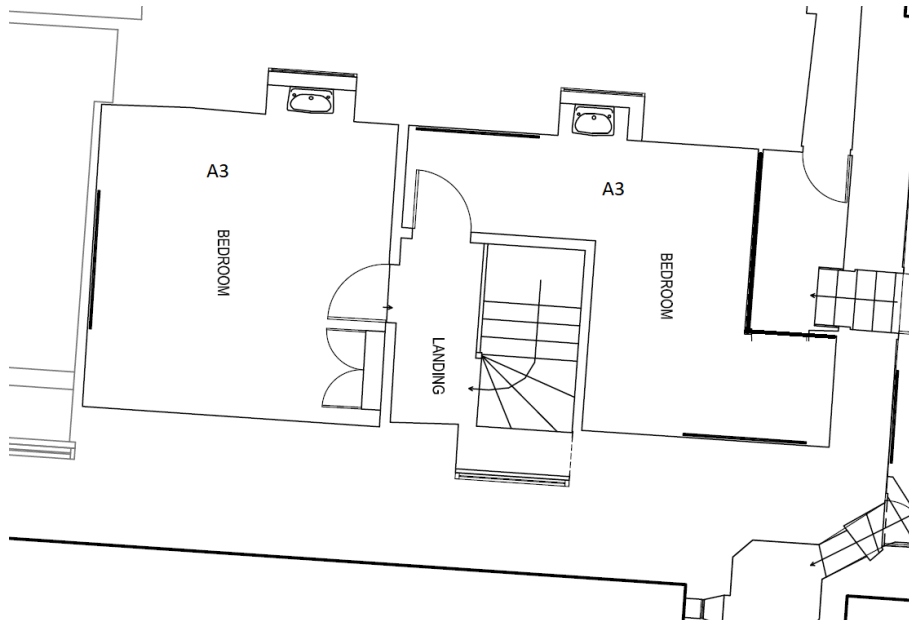


Floor Plans:

A3 access to lounge and gyp form First Floor



Access to bedrooms via lounge staircase to Second Floor



OPTION D - for groups of 6
Household 74 (FF1-FF6), Household 76 (FF15-FF20), Household 78 (FF27-32)

Details:

These are Cripps households in FF, with:

- Three en-suite rooms in band D
- Two private bathroom rooms in band C
- One very large en-suite corner room in band E. These rooms are roughly double the size of a regular Cripps room

Applying:

Please give the price bands (C, C, D, D, D, E) next to each member of the group that is interested. You can apply to all three households or a subset, but the nature of the random draw means that applying to more households increases the chance of getting one.

Example floor plans:

