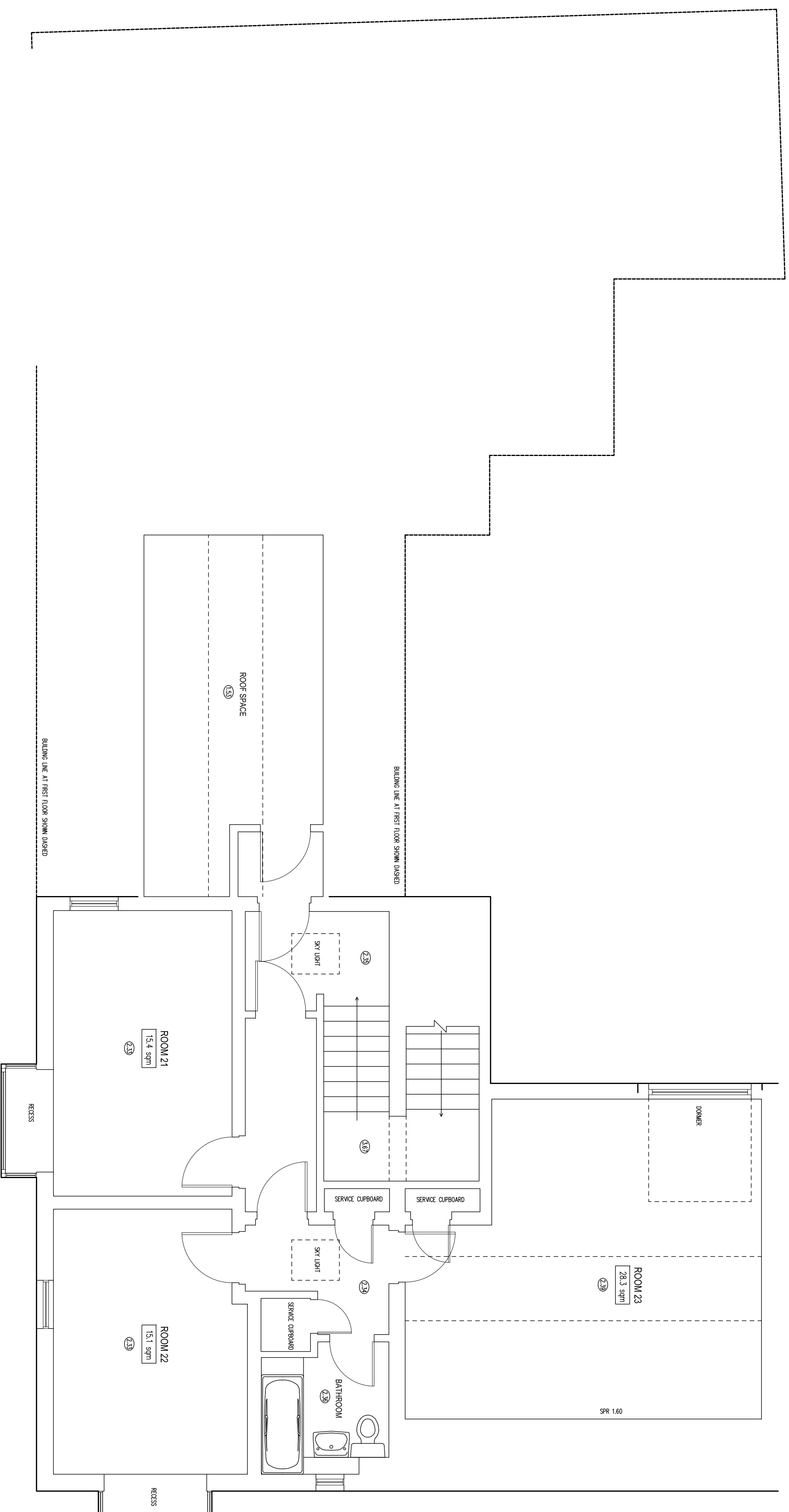
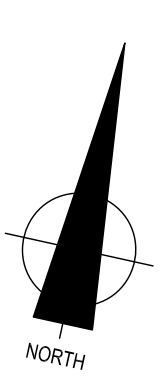
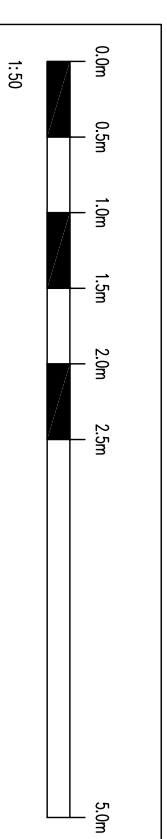


SECOND FLOOR PLAN



| LEGEND | |
|--------|--|
| ▷ | Telephone Socket |
| ◀ | Other Net Socket |
| ▽ | TV Aerial Socket |
| ■ | Fire Alarm Break Glass |
| ■ | Fire Alarm Sounder |
| ⊙ | Fire Alarm Control |
| ⊙ | Smoke Detector |
| ⊙ | Illuminated Fire Exit Sign |
| ⊙ | Single Supply Socket |
| ⊙ | Double Supply Socket |
| ⊙ | Single Gang Light Switch |
| ⊙ | Radior |
| ↔ | Key symbol for Direction |
| ↑ | Key symbol for Opening Direction |
| ⊙ | Key symbol for Floor To Ceiling Heights |
| ⊙ | Key symbol for Floor To Ceiling Heights |
| ⊙ | Key symbol for Floor To Ceiling Heights |
| ⊙ | Change in Floor Construction etc |
| ⊙ | "Hidden Detail" Under Stairs etc |
| ⊙ | "Overhead" Beams, Roof Lights etc |
| ⊙ | +FTL 1.00 - Finished floor level value |
| ⊙ | Height of window sill and window head from FFL |
| ⊙ | SILL 1.00 |
| ⊙ | HEAD 2.00 |



NOTES

SURVEY TIED INTO NATIONAL GRID OSTN12 AND OSGM02 DATA FOR HEIGHT USING GPS EQUIPMENT UTILIZING THE TRIMBLE VRS NOW SYSTEM FOR REAL TIME KINEMATIC (RTK) CORRECTIONS NATIONAL GRID SCALE FACTOR HAS NOT BEEN APPLIED TO THE SURVEY UNLESS SPECIFIED

DRAINAGE AND SERVICE INFORMATION SHOWN ON THIS SURVEY HAS BEEN OBTAINED BY VISUAL INSPECTION ONLY, ALTHOUGH ALL POSSIBLE CARE HAS BEEN TAKEN TO ENSURE THAT DETAILS SHOWN ARE CORRECT, WE ARE UNABLE TO ACCEPT ANY RESPONSIBILITY FOR COSTS ARISING OUT OF ANY ERRORS OR OMISSIONS. COPYRIGHT: THIS DRAWING MAY NOT BE REPRODUCED IN ANY FORM WHATSOEVER WITHOUT THE CONSENT OF C J SURVEYS LTD.

C J SURVEYS LTD
LAND | BUILDING | ENGINEERING
PROFESSIONAL MEASURED SURVEYS

CLIENT: QUEENS COLLEGE

DATE: MAR 2019
 DRAWN: GSI/CJ
 SHEET SIZE SCALE: A1 1:50

PROJECT: SECOND FLOOR LAYOUT PLAN
 NO.98-100 NORMWICH STREET, CAMBRIDGE
 DRAWING NO. 02619NS3

TEL: 01638 591031 MOBILE: 07945 779645
 WWW.WEBSITEADDRESS.COM
 EMAIL: mail@csurveys.co.uk