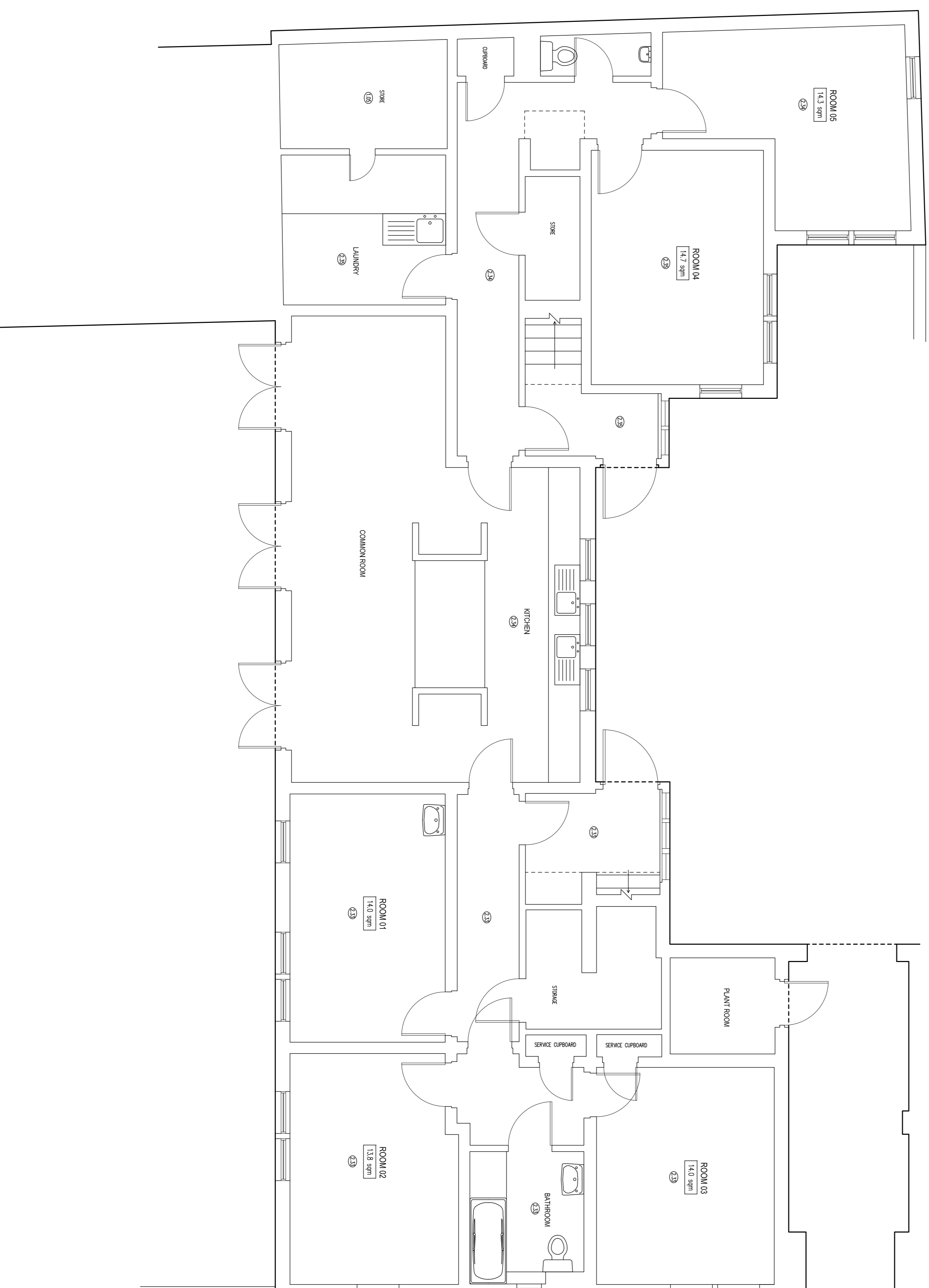
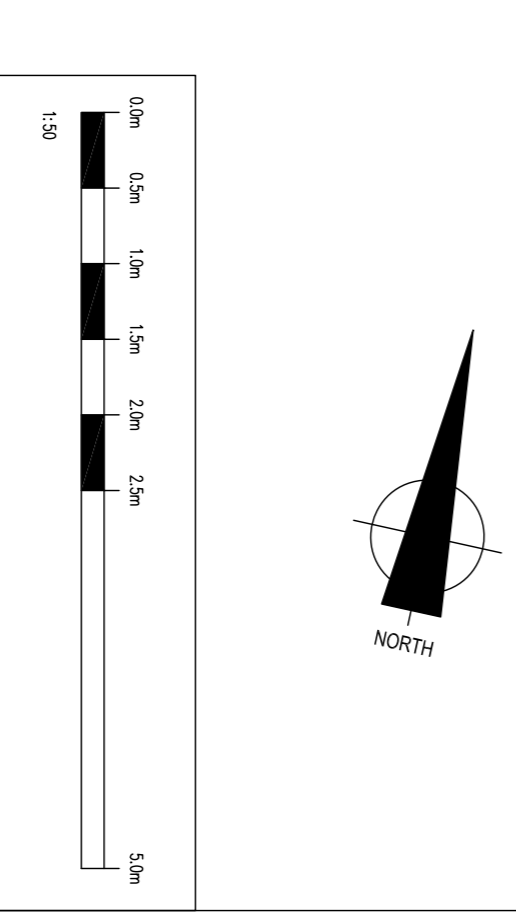


# GROUND FLOOR PLAN



**LEGEND**

▷	Telephone Socket	→	Key symbol for Direction
▲	Electric Nxt Socket	↕	Key symbol for Spring Change
▽	TV Aerial Socket	↗	Key symbol for Direction
□	Fire Alarm Break Glass	↘	Key symbol for Floor To Ceiling Heights
■	Fire Alarm Sounder	⊖	Key symbol for Floor To Ceiling Heights
⊖	Fire Alarm Sounder	⊕	Key symbol for Floor To Ceiling Heights
⊕	Fire Alarm Sounder	⊖	Key symbol for Floor To Ceiling Heights
⊖	Smoke Detector	⊕	Key symbol for Floor To Ceiling Heights
⊕	Smoke Detector	⊖	Key symbol for Floor To Ceiling Heights
⊖	Illuminated Fire Exit Sign	⊕	Key symbol for Floor To Ceiling Heights
⊕	Illuminated Fire Exit Sign	⊖	Key symbol for Floor To Ceiling Heights
⊖	Single Supply Socket	⊕	Key symbol for Floor To Ceiling Heights
⊕	Single Supply Socket	⊖	Key symbol for Floor To Ceiling Heights
⊖	Single Core Light Switch	⊕	Key symbol for Floor To Ceiling Heights
⊕	Single Core Light Switch	⊖	Key symbol for Floor To Ceiling Heights
⊖	Radior	⊕	Key symbol for Floor To Ceiling Heights
⊕	Radior	⊖	Key symbol for Floor To Ceiling Heights



**NOTES**

SURVEY TIED INTO NATIONAL GRID OSTN2002 AND OSGM02 DATUM FOR HEIGHT USING GPS EQUIPMENT UTILIZING THE TRIMBLE VRS NOW SYSTEM FOR REAL TIME KINEMATIC (RTK) CORRECTIONS NATIONAL GRID SCALE FACTOR HAS NOT BEEN APPLIED TO THE SURVEY UNLESS SPECIFIED

DRAINAGE AND SERVICE INFORMATION SHOWN ON THIS SURVEY HAS BEEN OBTAINED BY VISUAL INSPECTION ONLY, ALTHOUGH ALL POSSIBLE CARE HAS BEEN TAKEN TO ENSURE THAT DETAILS SHOWN ARE CORRECT, WE ARE UNABLE TO ACCEPT ANY RESPONSIBILITY FOR COSTS ARISING OUT OF ANY ERRORS OR OMISSIONS. COPYRIGHT: THIS DRAWING MAY NOT BE REPRODUCED IN ANY FORM WHATSOEVER WITHOUT THE CONSENT OF C J SURVEYS LTD.

**C J SURVEYS LTD**  
**LAND | BUILDING | ENGINEERING**  
**PROFESSIONAL MEASURED SURVEYS**

CLIENT: QUEENS COLLEGE

PROJECT: GROUND FLOOR LAYOUT PLAN  
 NO.98-100 NORWICH STREET, CAMBRIDGE

DATE: MAR 2019  
 DRAWING: GSI/CJ  
 SHEET SIZE SCALE: A1 1:50  
 DRAWING NO.: 02619NS/1

TEL: 01638 591031 MOBILE: 07945 775645  
 WWW: www.cjsurveys.co.uk EMAIL: me@cjsurveys.co.uk