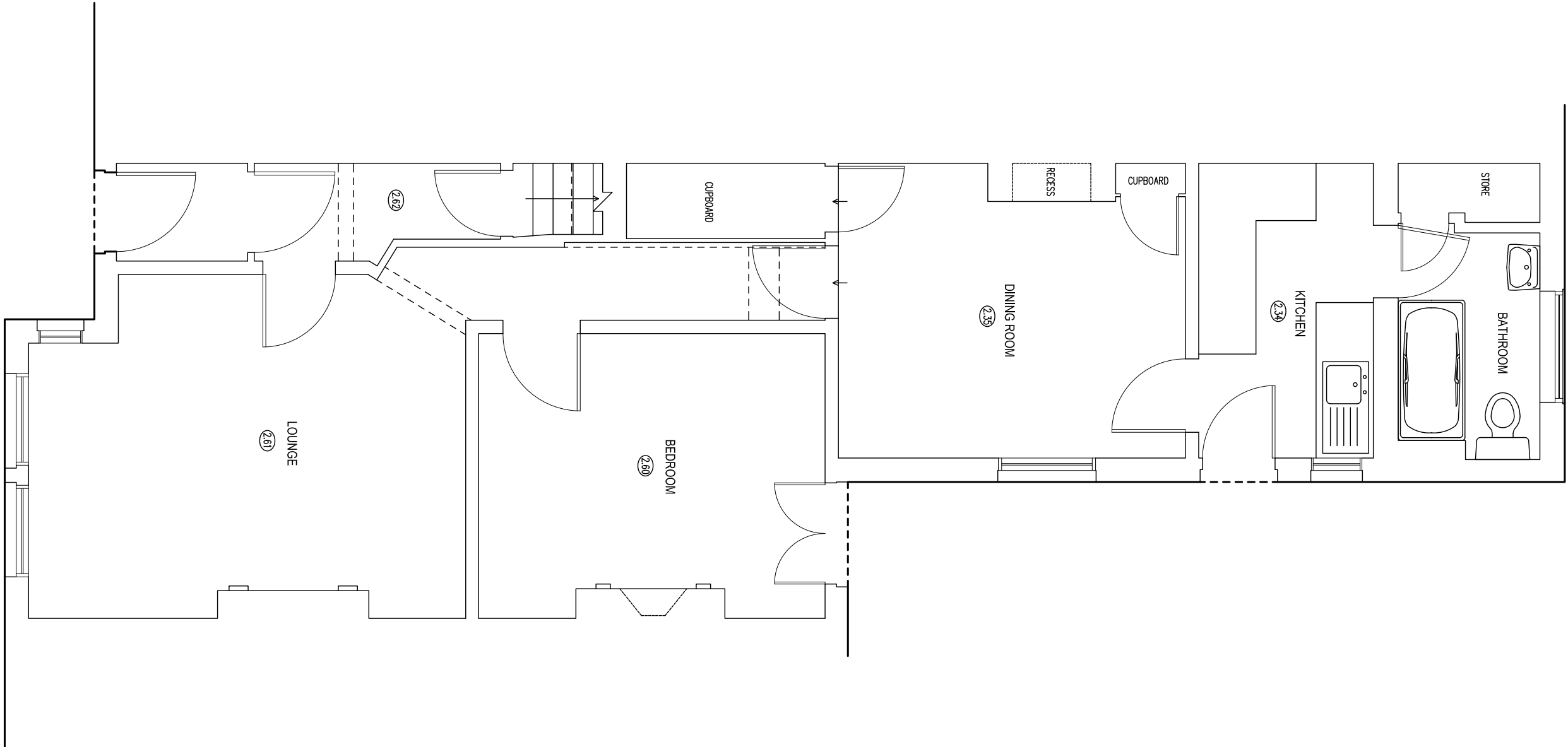


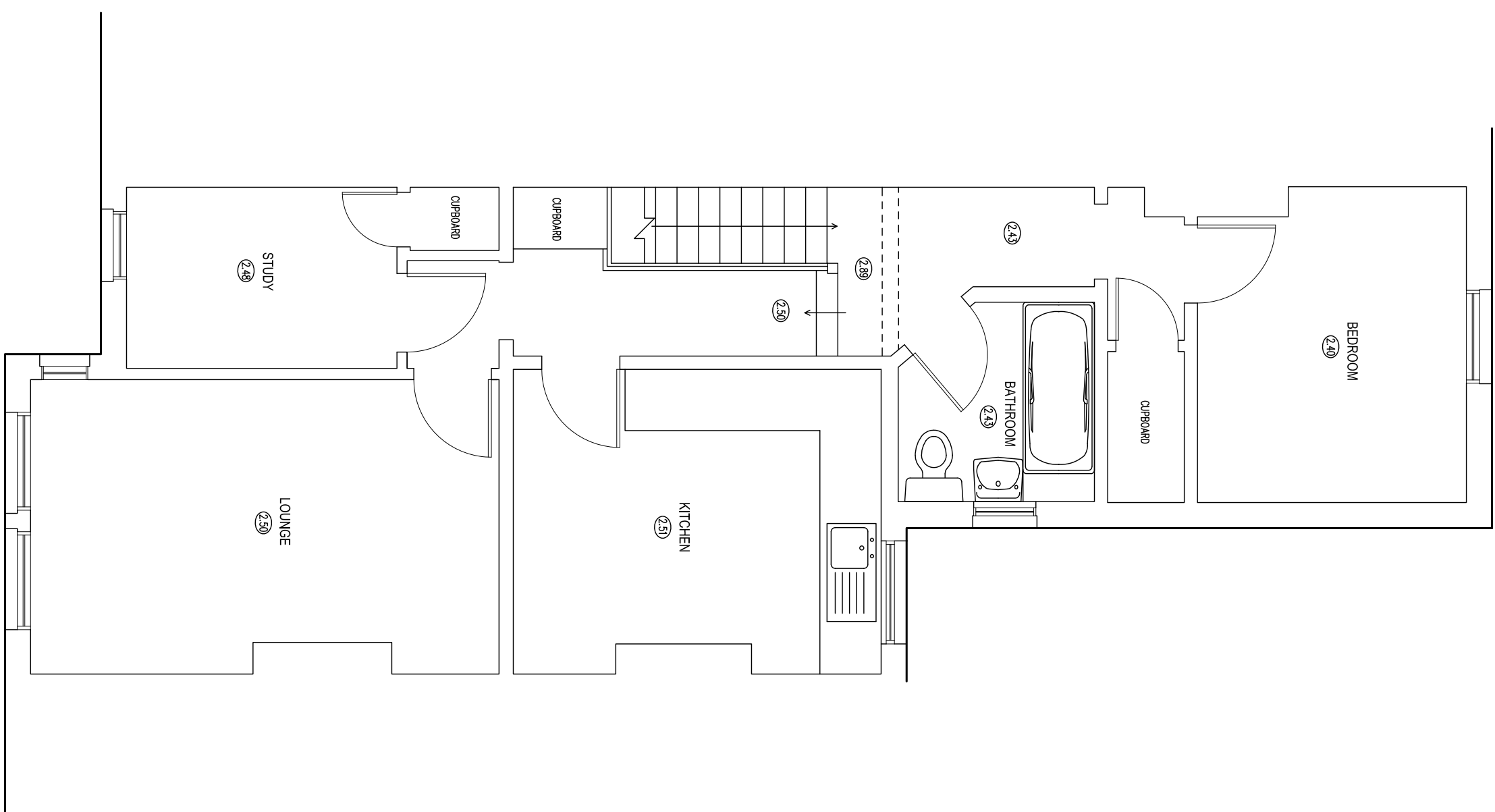
GROUND FLOOR PLAN

TOTAL FLOOR AREA = 59.6sqm

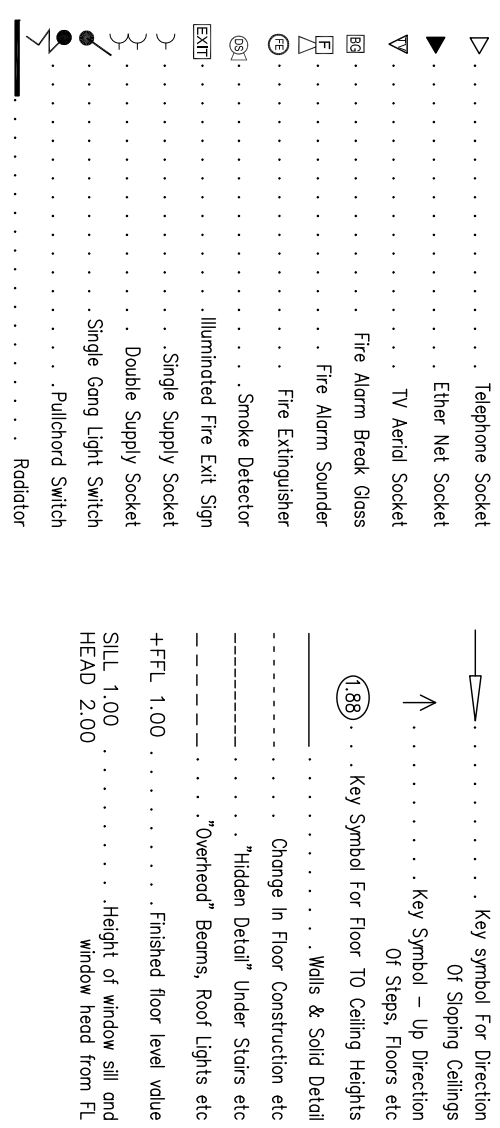


FIRST FLOOR PLAN

TOTAL FLOOR AREA = 54.5sqm



LEGEND



NOTES

SURVEY TIED INTO NATIONAL GRID OSTN02 AND OSGM02 DATUM FOR HEIGHT USING GPS EQUIPMENT UTILIZING THE TRIMBLE VRS NOW SYSTEM FOR REAL TIME KINEMATIC (RTK) CORRECTIONS
NATIONAL GRID SCALE FACTOR HAS NOT BEEN APPLIED TO THE SURVEY UNLESS SPECIFIED

DRAINAGE AND SERVICE INFORMATION SHOWN ON THIS SURVEY HAS BEEN OBTAINED BY VISUAL INSPECTION ONLY. ALTHOUGH ALL POSSIBLE CARE HAS BEEN TAKEN TO ENSURE THAT DETAILS SHOWN ARE CORRECT, WE ARE UNABLE TO ACCEPT ANY RESPONSIBILITY FOR COSTS ARISING OUT OF ANY ERRORS OR OMISSIONS. COPYRIGHT: THIS DRAWING MAY NOT BE REPRODUCED IN ANY FORM WHATSOEVER WITHOUT THE CONSENT OF C.J. SURVEYS LTD.

C J SURVEYS LTD

CLIENT QUEENS COLLEGE

LAND | BUILDING | ENGINEERING
PROFESSIONAL MEASURED SURVEYS

Tel: 01638 581031 Mobile: 07845 775645
Web: www.cjsurveys.co.uk E-mail: info@cjsurveys.co.uk

DATE FEB 2010

DRAWN	SHEET SIZE	SCALE
GS/C1	A1	1:50

PROJECT GROUND & FIRST FLOOR LAYOUT PLANS

NO.35 ELTISLEY AVENUE, CAMBRIDGE

DRAWING NO.