

Queens' College Record

1981





Queens' College as at March 1981

Visitor HER MAJESTY THE QUEEN

Patroness HER MAJESTY QUEEN ELIZABETH THE QUEEN MOTHER

President DEREK WILLIAM BOWETT, Q.C., M.A., LL.D., Ph.D. (Manchester)

Fellows:

Edwin Arthur Maxwell, M.A., Ph.D., Life Fellow, formerly Senior Bursar and Director of Studies in Mathematics.
James Arthur Ramsay, M.B.E., M.A., Ph.D., F.R.S., Emeritus Professor of Comparative Physiology, Life Fellow, formerly Vice-President and Director of Studies in Natural Sciences.
The Rev. Henry St John Hart, M.A., B.D., Life Fellow and Hebrew Lecturer, formerly Vice-President, Dean and Director of Studies in Divinity.
Sir Harold Walter Bailey, M.A., D.Litt. (h.c.) (W. Australia), D.Litt. (h.c.) (Australian National University), D.Litt. (h.c.) (Oxon), D.D. (h.c.) (Manchester), F.B.A., Life Fellow, Emeritus Professor of Sanskrit.
Sir Arthur Llewellyn Armitage, M.A., LL.B., LL.D. (h.c.) (Manchester), LL.D. (h.c.) (Q.U. Belfast), Life Fellow, formerly President.
Douglas Parmée, M.A., Director of Studies in Modern Languages.
John Holloway, M.A., Litt.D., D.Phil. (Oxon), D.Litt. (Aberdeen), Professor of Modern English.
Maxwell Marsden Bull, M.A., M.D. B.Ch., Director of Studies in Medicine.
Henry Cohen, M.A., Ph.D. (Dunelm), Assistant Director of Studies in Engineering.
Anthony Colin Spearing, M.A., Director of Studies in English.
Sir James William Longman Beament, M.A., Sc.D., F.R.S., F.R.S.A., Drapers Professor of Agriculture.
James Martin Prentis, M.A., M.Sc. (Eng), Ph.D. (London), Assistant Director of Studies in Engineering.
Norman Francis Hughes, M.A., Sc.D., Keeper of the Records and Assistant Director of Studies in Natural Sciences (Earth Sciences).
Kenneth Ewart Machin, M.A., Ph.D., Assistant Director of Studies in Natural Sciences (Physics).
Ajit Singh, M.A., B.A. (Punjab, Chandigarh), M.A. (Howard, Washington), Ph.D. (Berkeley, California), Director of Studies in Economics and Politics.
Brian Albert Callingham, M.A., Ph.D. (London), Assistant Director of Studies in Medicine and Admissions Tutor (Science).
James Diggle, M.A., Ph.D., Praelector and Director of Studies in Classics.
Peter Jaffrey Wheatley, M.A., Ph.D., Senior Bursar and Assistant Director of Studies in Natural Sciences (Chemistry).
John Tiley, M.A., B.C.L. (Oxon), Director of Studies in Law and Admissions Tutor (Arts).
John Edward Carroll, M.A., Ph.D., Director of Studies in Electrical Sciences.
Peter Gonville Stein, M.A., LL.B., Ph.D. (Aberdeen), Dr. iuris (h.c.) (Göttingen), F.B.A., Regius Professor of Civil Law, Vice-President.
The Rev. Brian Leslie Hebblethwaite, M.A., Dean of Chapel and Director of Studies in Theology and Religious Studies and in Philosophy.
Iain Richard Wright, M.A., Tutor, Librarian and Assistant Director of Studies in English.
John Timothy Green, M.A., Ph.D., Senior Tutor and Director of Studies in Mathematics.
David Barry Sattelle, M.A., Ph.D., Assistant Director of Studies in Natural Sciences (Biology).
Thomas Henry Coaker, M.A., Ph.D., Steward and College Lecturer in Natural Sciences.
Christopher John Baker, M.A., Ph.D., College Lecturer in History.
William Andrew Phillips, M.A., Ph.D., Tutor and Acting Assistant Director of Studies in Natural Sciences (Physics).
Brian William Napier, M.A., Ph.D., LL.B. (Edinburgh), Assistant Director of Studies in Law.
Kevin John Gray, M.A., Ph.D., Tutor and Assistant Director of Studies in Law.
Robin Douglas Howard Walker, M.A., Ph.D., Junior Bursar, Director of Studies in Computer Science and Assistant Director of Studies in Natural Sciences (Mathematics).
Roderick Arthur Smith, M.A., Ph.D., Director of Studies in Engineering.
Andrew Duncan Cosh, B.A., Ph.D., Tutor for Research Students and Assistant Director of Studies in Economics.
John Clive Ellory, M.A., B.Sc., Ph.D. (Bristol), College Lecturer in Physiology.
Peter Raynor MacDonald Steele, M.A., M.B., B.Chir., Ph.D., M.R.C. Path., Tutorial Bursar and College Lecturer in Pathology.
The Rev. Brendan Ignatius Bradshaw, M.A., Ph.D., Assistant Director of Studies in History.
Richard Robert Weber, M.A., Ph.D., Tutor and Assistant Director of Studies in Mathematics.
Allan Nuttall Hayhurst, M.A., Ph.D., Director of Studies in Natural Sciences and in Chemical Engineering.
Peter Spufford, M.A., Ph.D., Director of Studies in History.
Vani Kant Borooah, M.A., Ph.D., College Lecturer in Economics.
James Anthony Jackson, M.A., Ph.D., Research Fellow (Geophysics).
Peter Thomas Elian Merchant, M.A., Ph.D., Research Fellow (English).
Christopher John Pountain, M.A., Ph.D., Tutor and Assistant Director of Studies in Modern and Medieval Languages.
The Rev. John Sharp, M.Th. (London), Bye-Fellow and Chaplain.
Naomi Dinah Segal, M.A., Ph.D. (London), Tutor and College Lecturer in Modern and Medieval Languages.
Colin Fraser Ross, M.A., Ph.D., Research Fellow (Engineering).
George Carl Cormack, M.B., Ch.B. (Aberdeen), F.R.C.S. (Edinburgh), College Lecturer in Medical Sciences.
Philip Anthony Towle, M.A., Ph.D. (London), College Lecturer in History.

Honorary Fellows

The Rev. Henry Chadwick, M.A., Mus.B., D.D., D.D. (h.c.) (Glasgow), F.B.A., Regius Professor of Divinity.
Sir Thomas Padmore, G.C.B., M.A.
Sir Harold Walter Bailey, M.A., D.Litt. (h.c.) (W. Australia), D.Litt. (h.c.) (Australian National University), D.Litt. (h.c.) (Oxon), D.D. (h.c.) (Manchester), F.B.A.
Professor Sir Arthur Llewellyn Armitage, M.A., LL.B. LL.D. (h.c.) (Manchester), LL.D. (h.c.) (Q.U. Belfast).
Lord Allen of Abbeydale, G.C.B., M.A.
Alfred Charles Tomlinson, M.A., Reader in English Poetry in the University of Bristol.
Sir George Stanley Waller, O.B.E., M.A., Lord Justice of Appeal.
Professor Robert Neville Haszeldine, M.A., Sc.D., F.R.S., Principal of the University of Manchester Institute of Science and Technology.
Theodore Morris Sugden, M.A., Sc.D., F.R.S., Master of Trinity Hall.
James Arthur Ramsay, M.B.E., M.A., Ph.D., F.R.S.
Cyril Humphrey Cripps, M.A., LL.D. (h.c.)

The New Development and the College Appeal

Last year the President felt able to report the imminent completion of Phase Two of the Development. All of Cripps Court, with the exception of one staircase, FF in the south-west corner, had been occupied. Work on FF has continued during the past year and we now expect that it will be ready for occupation by October 1981. Thereafter our sights will be set on Phase Three. The large area to the west of the new Dining Hall, bounded by the end of the Fisher Building on one side and by the old Squash Courts on the other, has been cleared and will be ready whenever resources are available for further construction. In the present economic situation, it would be a rash man who attempted to forecast when that will be, so that after the frenetic activity of the last few years we are enjoying a temporary lull in building activity.

In the meantime, as the Junior Bursar's report shows in

detail, we have not been idle. In particular, much thought is being given to the best use to be made of the attractive Old Kitchen area. Thus the College's financial needs are still as pressing as ever and I am happy to report that the present gross figure of the College Appeal is now £338,796. This figure includes money which has been covenanted and which will come in gradually over the next few years. It is only by virtue of the continued faith of old Queensmen who have contributed so well in the past and who in many cases have renewed their covenants for further periods, that we can face the daunting tasks of maintenance and refurbishing which are continually with us. We are constantly amazed at the generosity of Queensmen and are very conscious of the responsibility laid on us by the confidence in the College which this support represents.

P.G.S.

Fisher and Cripps Buildings from the South



The Society

The main event of the year, the admission of the first women as members of the College, was almost a non-event. It has been treated by everyone as if it was the rectification of a slight oversight committed *per incuriam* 500 years ago. The absence of any particular significance in the arrival of women was underlined by the departure of both the President and of Dr Machin, the Senior Tutor, on sabbatical leave for the whole year.

Dr Bowett's election to the Whewell Chair of International Law from October 1981 gave great pleasure to the College. His ability to sustain a heavy burden of administration, together with an active and fruitful contribution to his rapidly developing subject, has been a source of our continuous admiration. For the first half of his sabbatical year he has been engaged in a number of international arbitrations and for most of the second half he will be teaching in the United States, resuming the active charge of the College in August 1981.

Dr Machin retired from the Senior Tutorship at the beginning of his sabbatical year. He had been Senior Tutor since 1971. During his tenure of office the academic standard of the College, as measured by such criteria as the number of Firsts obtained by Queensmen, increased significantly. He has, however, always been vigilant to see that this advance has not been achieved at the expense of the non-academic activities of the College. We are greatly in his debt. He has been succeeded as Senior Tutor by Dr Green, who has entered into the duties of the office with characteristic energy and enthusiasm.

The first woman to become a Fellow is Dr Naomi Segal, a Newnham graduate who has taught in Oxford. She is a Tutor and College Lecturer in Modern and Medieval Languages. Dr George Cormack, a medical graduate of Aberdeen University and a qualified surgeon, has been appointed a Fellow and College Lecturer in Medical Sciences. These two appointments were designed to ensure appropriate successors on the retirement of Mr. Parmée and of Dr Bull at the end of the current academic year.

Dr Baker, who has been a Tutor and Director of Studies in History, took leave of absence for the Michaelmas Term to work in South East Asia, the history of that region being his special field of study. To our regret, he has decided to resign his Fellowship in order to remain in the area. Dr Pountain has replaced him as Tutor and we have elected Dr P. A. Towle to a Fellowship and College Lectureship in History. He is a Churchill graduate who has had experience in the Civil Service and at the Australian National University.

Dr Sattelle and Dr Borooah, who were Bye-Fellows, have been made Official Fellows and Dr C. F. Ross has been appointed a Research Fellow in Engineering. Dr Coaker was on leave for the Michaelmas Term 1980 in Australia, Dr Smith is on leave for the Lent Term 1981 in Japan, and Dr Napier for the Lent and Easter Terms 1981 in Paris. Dr Ellory spent part of the Michaelmas Term in the Antarctic studying how the fish there, which apparently grow to a great size, manage to survive in the icy waters.

P.G.S.

Admissions for 1981

Last year, my predecessor wrote about the unprecedented strength of the 1980 entry. Following the pattern of other Colleges, we attracted a record number of applicants for our first year of co-residence. But whereas other Colleges' fortunes have turned after their first co-residential year, Queens' has again attracted candidates in large numbers. For 1981 we received just over 500 applications for 136 undergraduate places; 70 of these have won Scholarships or Exhibitions. Thus over half of our first year undergraduates will be award winners — a fact which has caused much comment from other Colleges, none of which has been as fortunate as ourselves.

In many ways this is tremendous for the College. Many of our huge field of candidates have splendid attributes in addition to their academic distinction and it has been agonisingly hard to make some of the decisions: we have turned down people we would really like to have taken (including, alas, children of Queensmen). The College has no quotas for men and women nor for individual subjects: happily, our first years next October will be more or less equally divided between arts and science and about 30 of them will be women.

It is hard to point to any one cause of our good fortune. Undoubtedly, the work of Dr Machin and the Admissions Tutors has been a major factor in attracting so many candidates. However, after interviewing many of them, it is clear to me that there are also two other reasons: first, we accommodate every undergraduate in College for all three years and second, we have gained the reputation for being a relaxed and informal College — and present undergraduates seem to do most of the publicity in this direction for us!

Of course we can hope to continue to climb the ladder of success: realistically it cannot be so. My term of office is bound to be marked by a downward trend (and I am anxious to have that in print now!). But, come what may, we shall strive to stay as high in the leagues as possible whilst keeping Queens' as it is — a happy College.

J.T.G.



Fisher W7 in January 1981

The Fabric

By the time you read this, the College should be moving into possession of most of the remaining part of Phase Two of Cripps Court, comprising 33 bed-sitting rooms and a Staff Flat. These make up the final residential staircase, FF, of the largest development ever undertaken by the College since its foundation.

At the time of writing, the builders are putting the last touches to rooms which are substantially complete. All the furniture needed has been purchased and is in store in College.

The new rooms will make it possible to accommodate a greater proportion of our post-graduate students in College, and also to reduce slightly the amount of sharing of sets by undergraduates. Queens' is already one of very few Colleges which can house its undergraduates in College for all three years.

During the year, the Buttery and Shop have been completed and brought into use. The Buttery forms a lobby between the Dining Hall, the Servedy and the outside Cloisters. One side of the Buttery is a Shop which sells a wide selection of items, ranging from provisions to stationery, and even College T-shirts.

After completing the residential rooms, the builders will turn their attention to a Launderette and a Meetings Room on the ground floor of FF staircase.

The major item of remedial work to be reported this year is the repair and reinforcement of the river bank of the Grove, the collapse of part of which was reported in last year's *Record*.

An underwater survey by divers revealed that for much of its 300 feet length, the bank wall was undermined by erosion of the river bed. Nothing less than a full-scale underpinning operation was called for. In the Easter Vacation 1980, sheet steel piles were driven alongside the entire length of the bank. The water level of the river was then lowered (by letting out Jesus Lock) and over 500 tons of concrete were poured in to stabilise the foundations of the wall. The collapsed section of wall was then rebuilt, partly with reclaimed bricks. The entire operation cost around £45,000, which has made severe inroads into the College's reserves.

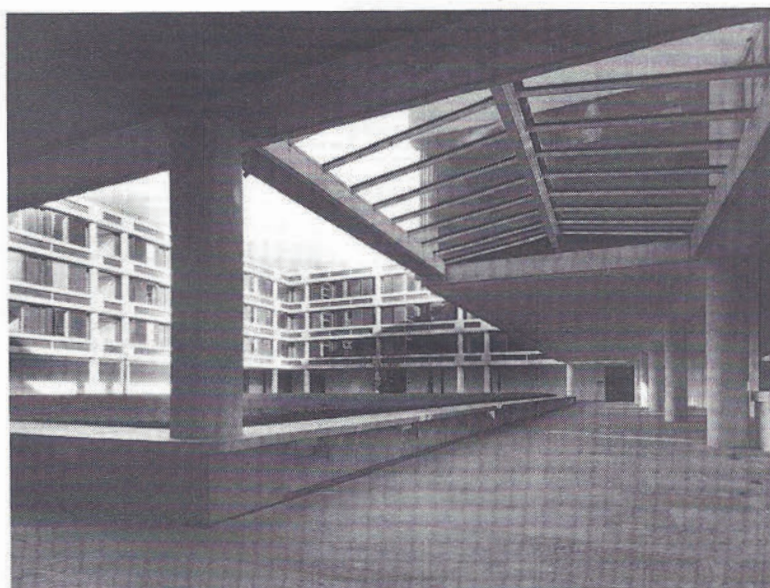
While the river level was down, we took the opportunity to dig out some of the silt from Queens' Ditch. The outfall of the pipe which feeds the ditch from the Mill Pool was rediscovered, and the whole pipe was jetted with high pressure water to clear out the silt that had built up over the years. Water may now flow through the Ditch again. The reinforcement of the Ditch bank by timber piling has also been completed, with the help of student labour during the vacations.

Another major task has been the installation in the Old Library of an Intruder Alarm and an automatic Fire Extinguishing system, which floods the room with an extinguishant gas in less than ten seconds in the event of smoke detectors sensing a fire. The system has been installed with the minimum of disruption to the appearance of the Old Library. The compressed gas cylinders have been hidden behind book-shelves in the Law Library (formerly Oriental Library) on the floor above.

A fire detection and alarm system has been installed in Erasmus Building, and a similar system is being installed in Fisher Building. The necessity for these works derives from modern Fire Regulations, rather than from any unsoundness in the buildings.

In the Old Hall, a further act of restoration has been the removal from the Oriel Window of a somewhat unhygienic hot cupboard formerly used for High Table service. The fabric below window level has been restored to its Victorian decorative state with the aid of old photographs.

During 1980, word was received from Little Eversden that a pile of old stained glass had been discovered in an outhouse at the Rectory there. A couple of panels were dusted down, photographed and compared with a pre-1890 photograph of the Old Chapel (now the War Memorial Library) at Queens'. There can be little doubt that the glass is indeed the stained glass inserted in the Old Chapel during restorations in the 19th century. This was taken down around 1925 and sent to Little Eversden (of which the College is Patron), but apparently the Diocese refused a faculty for the erection of the glass



Cripps Court from the foot of FF staircase

there, after which all trace of the glass was lost. The glass is now in very poor condition and no funds exist for its restoration.

In Friars' Building, four ground floor rooms at the back have been converted to provide bathrooms, showers and toilets. At the Sports Pavilion on Barton Road, alterations have been made to provide showers for women.

In College, the routine task of redecoration has continued with attention being given to rooms in Old Court and Walnut Tree Court. Particular care was taken with the bedroom of A3, where the 15th century attic ceiling was replastered with the beams left exposed; and in B1 and H3 many layers of hardboard, wallpaper and hessian were removed from the walls and the rooms carefully restored.

The new College Flag purchased out of donations from the Matriculation Year of 1954 was flown for the first time at the Club Weekend in June 1980.

Mr Frank Challis, Clerk of Works, retired in April 1980, aged 60. He joined the College's staff in December 1957, and was appointed Clerk of Works, in charge of all maintenance staff, in February 1975. During his time as Clerk of Works, he has seen the College expand into the new Cripps Court, thus nearly doubling the building maintenance burden. We wish him good health in his retirement. We are fortunate still to have contact with him through his wife, who helps us in the summer with tourist admissions.

R.D.H.W.

The Gardens

Dutch Elm disease continues to take its toll; two further elms have been taken down in the Grove.

The north bed of the Bowling Green is being replanted as a herbaceous border, and in other parts of the College overgrown shrubs are being gradually replaced.

Pump Court has been returned to grass after years of being paved.

R.D.H.W.



River wall progress

College Accommodation and Facilities for Members

The College has a substantial conference trade, and also undertakes catering for outside customers. There is every reason why Old Members of the College should know of, and make use of, these facilities. In addition, there have been occasions in the past when a particular Old Member has organised a meeting or colloquium to discuss a theme, produce a report, and so forth. To the extent that the matters for discussion fall within the areas of interest of any of the Fellows, there is scope for including Fellows in such discussion. The idea of promoting this kind of link between Old Members of the College and the existing Fellowship was raised by Mr G. D. N. Wilcock in 1980 and it was the wish of the Annual Meeting of the College Club that the possibilities of using the College facilities should be brought to the attention of all members.

It was, however, recognised by the College Club that the College's facilities are subject to certain constraints. Obviously, the facilities are available only in vacations, and their availability would have to be subject to any prior commitments made by the College towards conferences. These conferences usually book some two years in advance, though they do not necessarily take up all the available accommodation or facilities. It was also emphasised that the initiative for arranging such meetings of groups of members of the College ought to come from the members themselves, and not from the Fellowship. Equally, whilst some Fellows might well be very glad to join in with such groups, it was felt by the Committee of the Club that it would be unfortunate if they felt constrained to join with, or lecture to, such groups when their other duties made this impracticable.

As to cost, the particular facilities required, and the availability of accommodation, these can best be determined by members writing direct to the Steward, Queens' College.

D.W.B.

Guest Rooms

Independently of the above arrangements, a few Guest Rooms are available in College at all times. Guest Rooms may be booked by Members of College for the personal use of themselves together with a member of their immediate family or a guest, but it is regretted that children under 18 cannot be accommodated. The maximum length of booking is three nights. Enquiries about availability and rates may be made to the Tutorial Office, telephone Cambridge 65511, extension 231.

Herbert Ryle

The following is an extract from a sermon preached at the Commemoration of Benefactors in the College Chapel on the 27th April 1980 by Dr D. M. Thompson (1961-64), Fellow of Fitzwilliam College and University Lecturer in Divinity.

I hope that it is not just because I am a historian that I believe we need to know and understand our past in order to be able intelligently to move into the future. An occasion like this is an opportunity to bring some of the names we hear to life: and therefore I would like to illustrate briefly some of the aspects of the inheritance we receive in this place from the life of one of the benefactors who will shortly be named — Herbert Edward Ryle: President, Hulsean Professor of Divinity, Bishop of Exeter and then Winchester, and Dean of Westminster. I choose him because he comes, as it were, from my 'period' — his dates are 1856-1925: but also because, though not well-known, he illustrates very well the way in which Queens' has a series of figures who played a not unimportant part at crucial stages in the history of the Church in moving thought into a new era. Erasmus and John Fisher are clear examples of this at the turn of the sixteenth century; John Smith is another from the seventeenth century; and Isaac Milner, to whose influence the conversion of William Wilberforce was largely due, is identified with the evangelical revival in Cambridge at the end of the eighteenth and the beginning of the nineteenth centuries.

Herbert Ryle was elected President of Queens' in 1896, and his biographer gives us a delightful description of the circumstances:

The income of the President, owing to agricultural depression, was very materially reduced. The beautiful Lodge was an expensive house to live in. The College had been ruled by old men for many years. A younger man at this juncture was clearly desirable. Accordingly, as there was no member of the College who seemed to possess the necessary means and the desired youth, the Fellows decided to look for a President beyond their own body and their choice fell unanimously upon Professor Ryle.¹

Ryle has left his mark on the College in one way, which perhaps few people remember. When he was elected the college boat was in a very lowly position on the river, and at his first meeting with the undergraduates Ryle suggested that a club with such funereal colours (black blazer edged with green ribbon) could scarcely expect its boat to be anywhere else. He encouraged the change to a white blazer with green ribbon, and from that point the Queens' boat in both Lents and Mays began to rise. Mrs. Ryle made the club a new flag which was used triumphantly in 1898 when the Lent boat made four bumps — the first time for twenty years. Ryle established a relationship with his colleagues and the undergraduates which emphasised availability and personal friendliness. He re-opened the staircase from the President's study to Cloister Court, so that the undergraduates could have easy and direct access to him, without going through the formality of calling at the Lodge. In these and many other ways Herbert Ryle stood for the personal friendship across barriers of age, status or class that has always characterized Cambridge life at its best.

Secondly, as a theologian Ryle was one of that important group of young scholars at the end of the nineteenth century who sought to secure the acceptance of the principles of biblical criticism in the Church of England. In 1887 he had successfully offered himself as a candidate for the Hulsean Professorship just vacated by Hort with these words:

As a student of Theology it is my highest desire to give myself up to work upon the Old Testament. The great problems raised by recent criticism seem to make a special claim upon the enthusiasm and courage of the younger generation of students.²

And this was the task to which he devoted himself with considerable success. Nor was the fact that he undertook this task without significance, because his father, J. C. Ryle, Bishop of Liverpool, remained a steadfast evangelical of the older school, resisting the conclusions his son urged, though without any breach in the close relationship between them. As a teacher he found his lectures crowded: and he faithfully followed Bishop Westcott's advice to him:

Of course you will tell the undergraduates nothing: tell them nothing, teach them to find it out for themselves.³

Thirdly, as a churchman Herbert Ryle gave his support to those movements in his day which aimed to draw the churches together in the service of mankind. He was one of the speakers at the meeting in 1896 which established Cambridge House in south London, so that undergraduates could do voluntary social work in deprived areas. As a bishop and as Dean of Westminster he supported the reunion of the Churches. At his consecration in 1901, Armitage Robinson preached the sermon, which included these words:

Twenty years of Cambridge friendship, including six years of common professorial work, justify me in declaring that you will not narrow your sympathies either to espouse a party within the Church, or to ignore that wider work of God which goes forward beyond the limits of those who would readily own your control.⁴

This concern for reunion was echoed by another of those we commemorate tonight, C. T. Wood, Dean in the next generation, who wrote in 1916:

We *must* have reunion, or the world will find a larger Christianity without us: we *can* have it, giving up nothing that we hold dear except our exclusiveness, if we are equally ready to allow others to give up nothing which they in their turn hold dear.⁵

This was certainly part of the atmosphere of this chapel which I prized most highly as an undergraduate from a Free Church background.

Herbert Ryle stands then as a man, as a theologian and as a churchman, as someone who epitomises the inheritance which is ours. It would be tempting to call him a quintessential Queensman: but that would be arrogant particularism — to take the qualities of a great Christian, and imply that they were the peculiar possession of one place. But as those who find ourselves for a period in this particular place, we should aim to develop here those qualities of Christian life and witness which are the inheritance of this and many other colleges founded in the same faith.

One last word needs to be said. We remember Herbert Ryle tonight because he founded a prize for reading in chapel in memory of his son Roger. Roger Ryle was the younger of Herbert's two sons, and he died in 1897 whilst undergoing an operation for adenoids in the Lodge. He was about six or seven. He had been playing in the garden up to the last moment, came into the Lodge with the child-like simple question, "He will only send me to sleep for three minutes?" and never recovered consciousness after the anaesthetic had been administered. It was subsequently discovered that he had a lung condition that would almost certainly have developed into consumption. This left its mark on Herbert Ryle: before he left Cambridge to be consecrated bishop, he visited Roger's grave. A friend writing of the funeral said this:

The Chapel service for the little lad's funeral was one which will ever stand out in the memory of the friends who came and helped to sing the hymns of praise which the father and mother had chosen. No note of bitter grief was allowed to intrude, the music was full of tender thanksgiving that a child had been lent for a while to gladden the earth; and many must have realised, perhaps for the first time, something of the strength and reality of the Christian hope.⁶

'The strength and reality of the Christian hope': that, of course, is the note that is missing from the lesson from Ecclesiasticus. For the Jewish writer, to be remembered by name by subsequent generations was the only possible memorial — hence the sadness about those with no memorial, 'who were forgotten as though they had never been born'. But we, gathered as we are still in the season of Easter, have a larger hope. As Dean of Westminster, Herbert Ryle was responsible for the service on 11 November 1920 which marked the funeral of the Unknown Warrior, whose tomb lies at the west end of the Abbey. One of the texts on the tomb is from I Corinthians 15, 'In Christ shall all be made alive'. A leading Jew took issue with Ryle over the inclusion of this text, as the faith of the man was unknown, and Ryle replied:

The text does not define the faith of the dead man, but the faith of those who buried him and who are responsible for his grave.⁷

Those we commemorate by name tonight were for the most part Christians, but this college has included over the years and now includes men of other faiths and no faith. We remember them all tonight in a service of Christian worship, not to annexe them for our way of thinking, but to witness to our belief in the universality of the love and purpose of God, whose we are and whom we seek to serve. This is the inheritance we have received: it is ours to hand on to those who will follow, until the time when Jesus Christ is made all in all and we shall see him as he is — to whom, with the Father and the Holy Spirit, be ascribed as is most justly due, all might, majesty, dominion and praise, now and for ever.

Amen.

Notes

¹M. H. Fitzgerald, *Herbert Edward Ryle, A Memoir* (London, 1928) p 109.

²*Ibid.*, p 84.

³*Ibid.*, p 92.

⁴*Ibid.*, pp 142-3.

⁵*Religious Reconstruction after the War* (London, 1916) p 38.

⁶Fitzgerald, p 119.

⁷*Ibid.*, p 315.

The Chapel

The following visiting preachers came to the College Chapel in the course of the year: Prof. Morna Hooker, Lady Margaret's Professor of Divinity; the Rev. J. Fletcher, St Helen's, Bishopsgate; the Rev. Dr R. D. Williams, Chaplain of Westcott House; the Rev. J. K. Byrom, Vicar of Swaffham Prior; the Rev. D. C. Gray, Rector of Liverpool; the Rev. H. F. de Waal, Principal of Ridley Hall; the Rev. Prof. H. Chadwick, Regius Professor of Divinity; the Rt. Rev. M. A. P. Wood, Bishop of Norwich; the Rev. D. D. Billings, Rector of Houghton; Brother Rufus, S.S.F.; the Rev. R. M. Rees, Vicar of Holy Trinity; the Rev. J. E. Atwell, Chaplain of Jesus College.

The Dean of Chapel and the Chaplain also preached.

The Preacher at the Commemoration of Benefactors in Full Term was Dr D. M. Thompson, Fellow of Fitzwilliam College, University Lecturer in Divinity (Qu. 1961-64), and at the visit of the Club in June, the Rev. B. F. F. Crane, formerly Rector of Astbury (Qu. 1932-35). An extract from Dr Thompson's sermon appears elsewhere in the Record.

The Advent Carol Service was held on 30th November.

The Rev. John Sharp took up his post as Chaplain and Bye-Fellow in January.

G. M. Hunter was succeeded as Chapel Clerk by G. Prescott in the Michaelmas Term.

The Ryle Prize for reading in the College Chapel was awarded to C. D. Wood.

The Chapel Choir went on a tour of the West Country in July, and also gave a number of recitals in Cambridgeshire and Suffolk.

B.L.H.

The E Society

Two meetings of the Society were held in the Lent Term, one in the Easter Term, and three in the Michaelmas Term. The speakers were Dr Jackson on 'Earthquakes'; Dr Weber on 'Polls, Voting and Decisions'; Prof. C. N. L. Brooke, Fellow of Gonville and Caius, Dixie Professor of Ecclesiastical History, on 'Marriage in Literature and History, as seen by a Medievalist'; Dr Pountain on 'Before Babel'; Prof. F. H. Hinsley, Master of St John's, on 'British Intelligence in the Second World War'; and Dr Hayhurst on 'Chemistry and Flames'.

The E Society Dinner was held in the Monro Room on Saturday 3rd May.

B.L.H.

Thomae Smithi Academia

The *Thomae Smithi Academia* is a discussion group for Fellows, which meets twice each term in the Old Combination Room. Discussions were introduced as follows: by Dr Cosh on 'Current Tory Party Economic Policy'; by Dr Hughes on 'Wine Policy in the Seventies'; by Dr Coaker on 'Food and People'; by Professor Henry Chadwick on 'The Idea of a University'; by Dr Prentis on 'The Silicon Factor in Education'; and by Dr Hughes on 'College Wine'.

J.D.



The Old Hall in December 1980

The Old Hall

The following extracts by Stephen Wildman (formerly Research Fellow, now of Birmingham Art Gallery), are taken from his contribution to the catalogue of the recent William Morris Exhibition at the Fitzwilliam Museum.

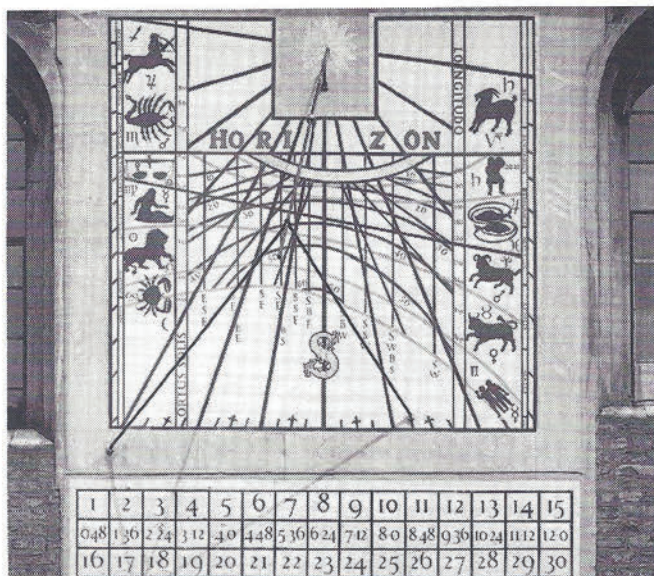
Restoration of the Hall began before Bodley's appointment, with the removal in the 1840s of the eighteenth-century false ceiling, which unveiled the fifteenth-century roof timbers. The window tracery was restored in 1846 and the armorial stained glass by Hardman was inserted in 1854. The redecoration of the Hall by Bodley and Morris seems to have fallen into two parts. First, the erection of the alabaster panel above the fireplace, inlaid with painted tiles, and the laying of the stone and tile floor, are of 1862-4. Secondly, the decoration of the walls and roof, with the addition of a coved canopy to the earlier work, belong to 1875. Morris's contribution was confined to the fireplace tiles and the roof, the wall decoration and coving being attributable to Bodley. The lower tier of angels must also have been replaced by Bodley. In combination with the classical panelling of 1732 by James Essex, which Bodley preserved and regilded, the sumptuous decoration which he and Morris designed makes the room one of the most stunning interiors in the country. The primary colouring may have been exaggerated during the spirited restorations of 1961 under the College Clerk of Works, Mr Harry Dunnington, but it does not exceed the original intention of providing any occupant of the room with an experience of exhilaration.

The manufacture of tiles was an early feature of Morris & Company, always hand-painted white Dutch tiles rather than the commercial dust-pressed or encaustic tiles of the Potteries manufacturers (e.g. those in the fireplace

itself and on the floor at Queens'), from the factory of W. Godwin of Lugwardine. Designs by members of the firm would be copied by draughtsmen first in outline, then in colour. A complete, if tentative, list of the designs can now be presented: *Queen Margaret of Anjou* — Madox Brown; *Queen Elizabeth Woodville* — Madox Brown; *St Bernard* — Burne-Jones; *St Margaret* — Rossetti(?); *Two Angels* — Morris; *January* (Janus) — Burne-Jones; *February* (Warming) — Burne-Jones; *March* (Pruning) — Madox Brown; *April* (Flower-bearer) — Morris; *May* (Hunting with hawk) — Madox Brown; *June* (Mowing) — Morris; *July* (Reaping) — Rossetti; *August* (Threshing) — Rossetti; *September* (Vintage) — Rossetti; *October* (?Feeding hogs) — Burne-Jones(?); *November* (Sowing) — Madox Brown; *December* (Killing a hog) — Madox Brown. The swan tiles, daisy tiles above and borders are by Morris.

The roof was painted in 1875-6, and with the exception of the fixing of the higher windows in Jesus Chapel, would represent Morris's last decorative work in Cambridge. F. R. Leach carried out the decoration of roof and walls, under Bodley's supervision, and a bill settled on March 7, 1876 details the insertion of 885 gilded lead castings in the form of stars. As with Leach's work in the other decorative schemes, Morris doubtless provided the inspiration. The sumptuous colour scheme of the Queens' roof, concentrating on the red/green colour contrast relieved by black-and-white detailing on the mouldings of the rafters and beams, may be seen as the fruits of the patient researches of George Wardle, Morris's manager, into roofs and rood screens of East Anglian churches (eighty-eight of his drawings, dating from 1865-6, are preserved in the Victoria & Albert Museum).

The Dial



The accuracy of the Dial as a scientific instrument is being investigated by Dr Frank H. King of the Computer Laboratory of the University.

He has identified many sources of error, some inherent in the use of sun dials and some due to specific faults in our dial.

Properly used, our dial purports to tell an observer (a) the time of day, (b) the approximate date, (c) the altitude of the sun, (d) the bearing of the sun, (e) the temporary hour (see G. C. Shephard's description of "Queens' Dial" on sale at the Old Porters' Lodge for more details).

An inherent error in all sun dials is that they give Apparent Solar Time, which differs from Mean Time, as registered by clocks, by up to 16 minutes at some times of year. Also, our own Dial is east of the Greenwich Meridian, which introduces a further half-minute error between our Dial and Greenwich Mean Time. Of course, during the summer, when the Dial is of most use, our clocks register British Summer Time, to the great confusion of visiting tourists!

Dr King has used the University computer to generate accurate diagrams of where all the lines and curves of our Dial ought to be, working from fundamental astronomical formulae. His work shows that, while most of the straight lines are near to their correct places, almost all of the curves are in considerable error, leading to errors in the displayed date of over three weeks! Moreover, the date curve for the winter solstice appears to be missing. He notes also that many of the half and quarter hour markers are badly positioned. Worse, however, is the fact that the last time the Dial was repainted, the painted image appears to have been shifted to the left by several inches relative to the style, and this is most obvious in the misalignment of the Midday/South line with the style. This latest mistake, which did not exist in earlier repaintings this century, is responsible for an additional error of up to ten minutes in the apparent time.

The next time the Dial is repainted, the positioning error can be corrected without changing the appearance of the Dial. Whether we should also put all the curves and lines in their correct positions to make the Dial into an accurate instrument is a more debatable point.

R.D.H.W.

The Library

1979-80

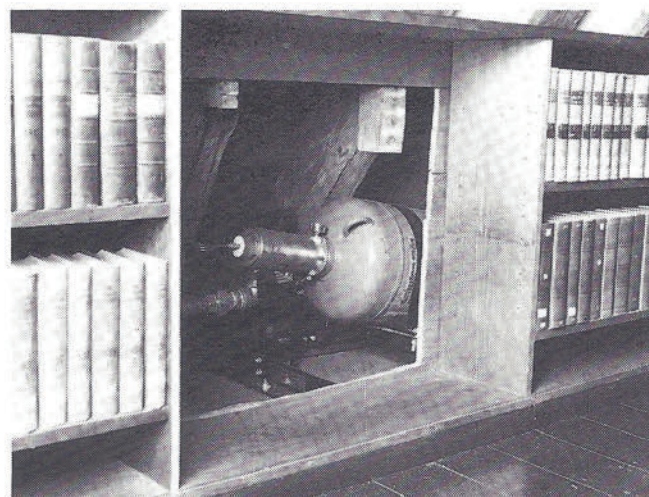
Librarian: Mr Wright

Deputy Librarian: Mr Wildman

Assistant Librarian: Mrs K. E. Machin

Graduate and Undergraduate Assistant Librarians: P. G. Smith, S. J. Hemmings, D. A. Meade, N. P. Taylor, D. R. Massey, C. D. St J. Penney, A. P-C. Yim, D. Annen

Last year saw the completion of a project long cherished by successive Queens' Librarians, the installation of a comprehensive fire detection and extinguishing system in the Old Library. Since any form of liquid-based sprinkler system would be likely to cause more damage than it prevented, the College has chosen a gas-based model, which will entirely fill the Old Library with inert gas in a matter of seconds if the automatic sensors detect fire. At the same time, we have installed a comprehensive and sophisticated intruder detection system throughout the Old Library area. All members of the College will no doubt share the Governing Body's satisfaction that, for the first time since Andrew Doket drew up the first catalogue of the Library in the mid-fifteenth century, our unique collection of ancient books and manuscripts is now properly protected against both fire and theft.



Installation of gas cylinders to protect the Old Library, concealed behind bookshelves in the Law Library above.

The most notable addition to the Library last year was the first volume of the second English edition of Erasmus's great and historically influential work, *The Paraphrase upon the newe Testament* of 1552. The College had previously held only the second volume, and was able to complete its set with the aid of a generous donation from the American Friends of Cambridge University in memory of Abraham Hertzberg. We were also particularly grateful for the donation of a large collection of works about Japan from the President and staff of the Osaka Gakuin University.

The following Fellows donated works by or edited by themselves: Dr Prentis, *Engineering Mechanics and Dynamics of Mechanical Systems*; Dr Singh (with A. Hughes), *Mergers, Concentration and Competition in Advanced Capitalist Economies* and *Competition Policy in the 1980s*; Professor Stein, *Legal Evolution*; Mr Hebblethwaite, *Problems of Theology and Christianity*

and Other Religions; Mr Wright (et al.), *Culture and Crisis in Britain in the 1930s*; Dr Sattelle, *Receptors for Neurotransmitters, Hormones and Pheromones in Insects*; Dr Coaker, *Applied Biology, Vol. V*; Dr Phillips, *Modern Physics*; Dr Smith, *Introduction to Fracture Mechanics*. Books have also been given by Dr Diggle, the Librarian, Dr Pountain, Dr Smith, Dr Callingham, Mr Wildman, Professor Riley-Smith, Dr Gray, Mr Hebblethwaite, Mrs P. W. Brian, G. A. Starr, G. K. Das, Professor B. Mogridge, Dr R. L. Martin, Dr N. K. Rutter, L. S. Marchant, Dr C. D. Heath, A. G. F. Sanctuary, W. A. Scott, K. Sprague, A. Noble, J. Jackson, R. E. Loosen, J. P. Arthur, the Faculty of Oriental Studies and the Cambridge University Press.

1980-81

Librarian: Mr Wright

Assistant Librarian: Mrs R. Hill

Graduate and Undergraduate Assistant Librarians:

H. R. N. Jones, D. Annen, D. R. Massey, N. P. Deakin, M. J. S. Hurst, J. R. L. Fellows

I.R.W.

First Classes and Distinctions 1980

Architecture: P. C. G. Beard

Chemical Engineering: R. B. Thorpe

Classics: D. G. McFarland, S. P. Oakley

Economics: M. A. El-Erian, S. J. Roberts

Education: P. J. Cowley, P. E. Pearson, P. D. Smith

Engineering and Electrical Sciences: I. P. Dale, B. A. Herscher; R. J. Appleton, D. M. Apthorp, S. M. Hobbs; J. M. Duck, K. P. Fullbrook, P. R. Smith, N. G. Walker

English: J. M. G. Vessey

History: G. P. A. Brown, G. S. Garnett; A. J. Bailey

Law: A. R. Christie; S. N. Bridge; A. D. Darwin, G. R. Newey, K. G. Young; D. M. Dreyfuss; S. R. Weatherill

Mathematics: P. H. Haynes; T. C. Carden, N. F. J. Inglis, P. C. N. Shine, M. P. Streuli, M. J. Thompson; D. J. T. Sun, J. L. Taylor

Medical Sciences: A. T-C. Ho; G. A. Haywood, E. C. Czepulkowski; N. H. Brown, A. G. Torrance

Modern and Medieval Languages: S. N. Botterill; D. J. Ash, J. L. Raymond, P. McF. Stewart; C. M. Kennedy

Natural Sciences: A. B. Hawthorne, A. J. Green, A. Goldman, M. K. Osborn, N. J. G. Smith; G. P. Aylett, N. C. Beck, J. Kimberlin, M. McGrath, D. P. Peterzan, S. K. Rayner; R. H. Lord, N. J. Macnaughton, T. R. Marsh, I. H. Willats

Theology: J. M. G. Barclay

University Awards

Bartle Frere Exhibition: M. R. Wilson-Jones

Smith's Prize: M. J. Simon

Charles Oldham Classical Scholarship: S. P. Oakley

Wrenbury Scholarship: M. A. El-Erian

James William Squire Scholarships: G. R. Newey, S. R. Weatherill

T. R. C. Fox Prize: R. B. Thorpe

College Scholarships and Exhibitions

Entrance Scholarships

J. H. Aldersey-Williams, Highgate School, in Natural Sciences (Melsome).

P. J. H. Almond, Malvern College, in English.

T. Bannatyne, Eton College, in Natural Sciences (Melsome).

P. R. V. Broke, Eton College, in History.

P. M. Bruce, Sir Thomas Rich's School, in Mathematics.

S. M. Bryant, St Olave's Grammar School, in English to read Philosophy.

Miss M. E. Burgess, Casterton School, in History.

M. K. Chapman, Windsor Boys' School, in Natural Sciences (Melsome).

J. M. Corne, Latymer Upper School, in Natural Sciences to read Medical Sciences (Melsome).

D. J. Cummings, Aylesbury Grammar School, in Engineering.

M. C. Dean, Haberdashers' Aske's School, Elstree, in History.

S. Dhar, John Kennedy College, Mauritius, in Natural Sciences (Melsome).

M. D. Drinkwater, Haberdashers' Aske's School, Hatcham, in Music (Paterson).

P. R. Edwards, High Wycombe Royal Grammar School, in Natural Sciences (Melsome).

A. R. Ennos, Hampton School, in Natural Sciences (Melsome).

R. F. S. Evers, King Edward VI School, Birmingham, in English (Colenutt).

M. W. Forsyth, George Watson's College, Edinburgh, in Natural Sciences (Melsome).

Miss C. E. Harre, Blyth Jex School, in Modern Languages (Colenutt).

D. N. Higgins, Whitgift School, in History.

A. J. Hobson, Nottingham High School, in Natural Sciences to read Law (Melsome).

A. D. Hoffman, William Hulme's Grammar School, Manchester, in Engineering.

R. A. Lewis, Merchant Taylors' School, Northwood, in Natural Sciences (Melsome).

R. M. Nix, Nottingham High School, in Natural Sciences (Melsome).

D. Parker, Taunton School, in Natural Sciences (Melsome).

L. Peel, St Albans School, in Engineering.

E. A. M. Pilkington, Latymer Upper School, in History.

J. E. Prince, Manchester Grammar School, in Natural Sciences (Melsome).

J. W. Renshaw, Shrewsbury School, in Natural Sciences (Melsome).

A. G. Roberts, Huddersfield New College, in Engineering.

A. J. H. Schuster Bruce, Oundle School, in Natural Sciences (Melsome).

S. P. Smith, Newcastle-upon-Tyne Royal Grammar School, in Mathematics.

R. J. Wilkinson, Hulme Grammar School, Oldham, in Natural Sciences to read Medical Sciences (Lees & Chadwick).

N. J. Wyke, Eton College, in Mathematics (Munro).

Entrance Exhibitions

- T. P. Arnheim, Sherborne School, in Theology and Religious Studies (Bolton).
T. E. Bergin, Aylesbury Grammar School, in English to read Law.
S. A. Bryan, Bancroft's School, in History.
Miss M. F. C. Callan, St Leonards-Mayfield School, in Natural Sciences to read Medical Sciences (Paterson).
J. R. F. Collins, Ampleforth College, in English.
J. H. Davey, Nottingham High School, in History to read Law.
P. Draper, Barton Peveril College, in Engineering.
Miss S. L. Dunn, Goffs School, in English to read Philosophy.
D. R. Evans, Latymer Upper School, in English (Paterson).
K. W. A. Feistner, King's School, Canterbury, in Natural Sciences (Melsome).
S. P. C. Files, Wyggeston and Queen Elizabeth I College, Leicester, in History.
D. S. Fogg, Magdalen College School, Oxford, in Engineering.
A. G. A. Frost, Eton College, in Economics (Paterson).
J. D. Goudie, Aylesbury Grammar School, in English.
A. M. Highcock, North Leamington School, in Modern Languages (Haynes).
Miss D. S. Hyatt, Brynteg Comprehensive School, in Natural Sciences (Melsome).
A. S. Jacobs, University College School, in Natural Sciences to read Law (Melsome).
A. G. Jennings, Liverpool College, in Natural Sciences to read Medical Sciences (Frodsham).
D. P. G. Jones, Bedford Modern School, in Natural Sciences to read Medical Sciences (War Memorial).
R. D. Kerley, Marlborough College, in Economics.
J. Khan, Mill Hill School, in Natural Sciences to read Medical Sciences (Melsome).
P. E. Mansell, Kingston Grammar School, in Natural Sciences to read Engineering (Melsome).
J. P. Medd, Winchester College, in Classics to read Law (Gray).
N. H. Moberly, Winchester College, in English.
Miss J. M. Munro, Westminster School, in Mathematics (Paterson).
P. D. Newnham, City of London Freeman's School, in Natural Sciences (Melsome).
A. P. Owen, St Olave's Grammar School, in Natural Sciences (Melsome).
Miss L. J. Parkes, The Alice Ottley School, in Modern Languages.
R. J. Portlock, University College School, in Natural Sciences (Paterson).
I. Rayner, The Judd School, in Natural Sciences (Melsome).
D. L. Ruffley, Bolton Boys' School, in History.
C. M. Shepherd, North Leamington School, in Natural Sciences (Melsome).
A. R. Thomson, St Albans School, in Natural Sciences to read Medical Sciences (Melsome).
M. C. Van Der Lande, Worth School, in History to read Law.
Miss C. Vollmer, Westminster Tutors, in Modern Languages to read Archaeology and Anthropology.
Miss S. C. White, Oxford High School, in English to read Theology and Religious Studies (Glendinning Nash).

Miss J. K. Whitwell, Queen Anne Grammar School, York, in English.

FIRST YEAR

College Exhibitions

P. C. G. Beard for Architecture; J. M. Duck for Engineering; P. R. Smith for Engineering; S. R. Weatherill for Law; D. J. T. Sun for Mathematics; R. H. Lord for Natural Sciences.

SECOND YEAR

Foundation Scholarships

R. J. Appleton for Engineering; D. M. Apthorp for Engineering; S. M. Hobbs for Engineering; A. J. Bailey for History; D. M. Dreyfuss for Law; T. C. Carden for Mathematics; N. F. J. Inglis for Mathematics; P. C. N. Shine for Mathematics; M. P. Streuli for Mathematics; M. J. Thompson for Mathematics; G. P. Aylett for Natural Sciences; N. C. Beck for Natural Sciences; J. Kimberlin for Natural Sciences; M. McGrath for Natural Sciences; D. P. Peterzan for Natural Sciences; S. K. Rayner for Natural Sciences.

THIRD YEAR

Foundation Scholarships

M. A. El-Erian for Economics; S. J. Roberts for Economics; B. A. Herscher for Electrical Sciences; I. P. Dale for Engineering; J. M. G. Vessey for English; G. P. A. Brown for History; S. N. Bridge for Law; G. A. Haywood for Medical Sciences; E. C. Czepulkowski for Medical Sciences; A. B. Hawthorne for Natural Sciences (Medicine); M. K. Osborn for Natural Sciences; N. J. G. Smith for Natural Sciences.

Bachelor Scholarships

D. G. McFarland for Classics; S. P. Oakley for Classics; B. A. Herscher for Electrical Sciences; G. S. Garnett for History; G. R. Newey for Law; S. N. Botterill for Modern and Medieval Languages; M. K. Osborn for Natural Sciences; N. J. G. Smith for Natural Sciences.

FOURTH YEAR

Bachelor Scholarships

R. B. Thorpe for Chemical Engineering; P. H. Haynes for Mathematics.

Special Prizes

Joshua King Prizes: S. N. Botterill, S. N. Bridge, G. S. Garnett.

Venn Prizes: P. C. G. Beard, T. R. Marsh, N. G. Walker.

Penny White Prize: S. P. Oakley; *proxime accessit* D. G. McFarland.

Chalmers Prize: A. J. Green

Chase Prize: P. K. Robinson

Melsome Memorial Prize: A. B. Hawthorne

Lucas Smith Prize: S. N. Bridge

Clayton Prize: J. M. G. Barclay

Mosseri Prize: G. P. Aylett

Openshaw Prize: T. C. Carden

Northam Memorial Prize: S. J. Roberts

The College Union

1979-80

President: J. R. Owen
Vice-President: Dr Baker
Secretary: S. J. Phillips
Senior Treasurer: Dr Weber
Treasurer: J. N. White
External Officer: A. M. Alves
Steward of the Fitzpatrick: R. H. Bigley
Fellows: Dr Steele, Dr Carroll
Graduate: D. M. Mulhaupt
Third Year Representatives: P. D. Edwards, E. R. W. Lindsay
Second Year Representatives: A. M. Mackenzie, M. J. H. Scott
First Year Representatives: P. D. Allen, A. J. Baker
Governing Body Observers: L. J. Walsh, N. J. Knight

This year the College Union was fortunate in having three members elected to the Council in February who had served on the Council in the previous year and thus provided some continuity. Unfortunately there was a lack of people willing to stand and a number of the posts were uncontested. However there was again a revival of interest among the new First Years, seven of whom stood for the two posts of First Year Representative in November. The Council has continued to devote itself throughout the year to the welfare of its members whilst keeping clear of National and International Politics — a policy endorsed by the Members.

Much of the work of the Union is routine but nonetheless very important; it continues to provide the basic services of a T.V. room with newspapers and magazines as well as bar and video games. At present plans are being discussed to dramatically improve and expand the facilities available for Junior Members' use, while in the short term the College have agreed to refurbish the present bar area which should help to change its 'airport lounge' atmosphere. Andy Curry continued the good work of running the J.C.R. shop providing stationary and many other items at the cheapest prices in Cambridge. Recently however this venture has been taken over by the College Catering Department and now provides a similar service for much longer opening times, as well as selling food.

A great deal of hard work was also done by Julian Thomas who produced regular weekly newsletters of considerable length featuring a wide range of articles on forthcoming events, sports reports, cookery and general information. Recently it has been particularly encouraging to see First Years providing a great deal of material for the Newsletter. During the year the Union has also greatly improved the services available to its members. For example a new electric duplicator has been purchased which, along with a new typewriter, is available for use by Members.

Simon Richards arranged a number of discos of a consistently high standard and also recently organised a Christmas Party. But perhaps the highlight of the entertainments was the dinner organised to celebrate the forthcoming co-residence held last June — an event which received some publicity in the National Press. A

disco was organised early in the Michaelmas Term which was free for First Years and was part of the Union's efforts to welcome First Years. As usual a letter was sent to all First Years before they came up and special efforts were made this year to make the transition to co-residence as smooth as possible.

The Union continued its function of financing College Sports Clubs and other College Societies and also admitted the Darts, Karate and Film Clubs to the status of Affiliated Clubs. Throughout the year Members' suggestions have been discussed at numerous J.C.R. and Council meetings along with various Open meetings. Many of the suggestions put forward have already been acted upon and many others are still under discussion.

1980-81

President: J. N. White
Vice-President: Dr Weber
Secretary: A. D. Pomfret
Senior Treasurer: Dr Phillips
Treasurer: J. M. Price
External Officer: P. A. Bruce
Steward of the Fitzpatrick: G. A. Hoffman
Fellows: Dr Steele, Dr Carroll
Graduates: B. R. Cassell, Miss S. H. Thomas
Third Year Representatives: A. P. Curry, J. C. V. Thomas
Second Year Representatives: S. J. Richards, J. G. Turner
First Year Representatives: C. S. Morrice, W. J. Shapcott
Governing Body Observers: N. J. Knight, L. J. Walsh



The Buttery Shop

M.C.R.

The last year saw much success in the combining of both social and educational functions in the M.C.R. The practice of hosting guest speaker evenings with preceding dinners has been continued. In May Professor Sonnet of NASA gave a talk on space exploration and in November Dr Porter of the University of Washington explained the receding(?) Ice Age and its meteorological effects. These talks have enjoyed much support and we are confident that this activity will be in great demand in future years. In addition, M.C.R. members have taken the initiative to give a series of research student talks in the Woodville Room enabling fellow members to get an impression of the research done in fields other than their own.

In June a Greek evening was held at which Greek food, drink and dancing was provided. The Michaelmas Term was highly eventful with two M.C.R. parties, including a Christmas party, and weekly Graduate Table dinners during Formal Hall. We are, as ever, grateful to the Fellows for continuing to give graduate students the opportunity to dine on High Table. Other notable events include the sherry parties hosted by Dr and Mrs Bull and the informal dinners at Andy and Jill Cosh's which are greatly enjoyed. The drinks cupboard in the Woodville Room has been reinstituted and members are now able to purchase after hour drinks.

Significant improvements to the M.C.R. constitution were worked out in collaboration with Dr Cosh and were approved at a subsequent extraordinary general meeting held in December. Three M.C.R. sports teams have been entered in the Graduate Society sports tournaments, five-a-side football, darts and table-tennis.

This year has been a very eventful one and the M.C.R. will certainly have no trouble in maintaining its reputation of being one of the most active in Cambridge.

1980-81

President: Dr M. M. Bull

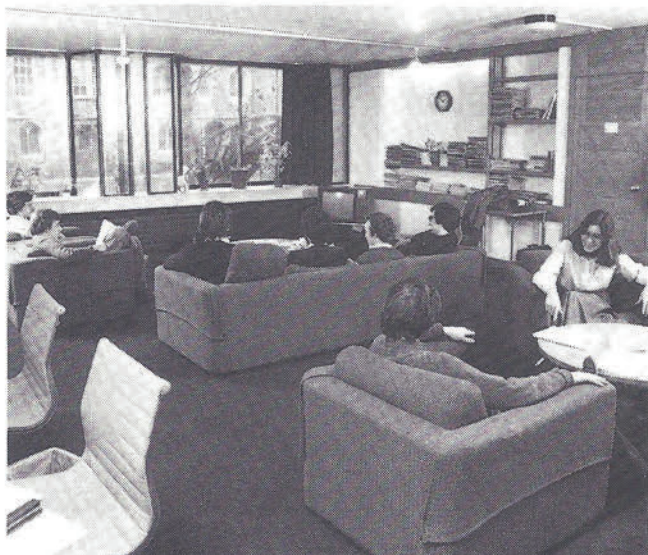
Chairman: B. R. Cassell

Secretary: J. W. Gardner

Treasurer: S. P. Luttrell

Steward: Miss S. H. Thomas

Room Steward: H. R. N. Jones



Middle Combination Room

St Margaret Society

1979-80

President: Professor Sir J. W. L. Beament

Vice-President: J. W. Higgins

Secretary: M. B. Alabaster

Treasurer: M. J. Williams-Ellis

Committee: W. J. Howgego, J. Thompson, H. S. Ridge,
G. P. Aylett, N. W. Watts

The high standard set in 1979 was more than maintained in 1980. The Lent Term saw the continuation of the very successful series of lunchtime recitals featuring the chamber music of Brahms. The recitals were performed by some of the best University instrumentalists and consistently commanded large audiences.

The end of term concert consisted entirely of works by Mozart: a piano concerto (in which the soloist was Jonathan Higgins), the triple piano concerto and the Mass in C Minor, the latter being conducted by Nicholas Watts. The choice of works provoked some controversy: some members felt that a second choral item would have been more acceptable and many were concerned at the importing of a non-Queensman conductor for the instrumental items. However, the concert was a great success and was well received by a large audience.

The other event of the term was the annual Smoking Concert which was, of course, as alcoholic and as irreverent as ever.

In the Easter Term, the May Week concert consisted of two instrumental works by Schubert and a performance by the Chapel Choir of Vaughan-Williams' "Five Mystical Songs". In the interval, the audience was served strawberries and wine to the sound of more Vaughan-Williams: the Serenade to Music which was conducted by Stephen Armstrong.

The Michaelmas Term found the College in the unfortunate position of only having one person (the Organ Scholar) reading music. However, the new Committee, undeterred by their merely amateur status, was quick to capitalise on the success of the old one. With Brahms' chamber works exhausted, a series of Mozart Chamber Music recitals were embarked upon and then proved equally popular. The recitals now take place in the Old Hall, a building ideally suited to the performance of chamber music.

The end of term concert consisted of one work: Purcell's King Arthur conducted by the Society's new Vice-President, Simon Phillips. Although the size of the chorus would have offended some Baroque purists, the performance was well attended and received an enthusiastic report in the local press.

So the St Margaret Society moves into 1981 maintaining its position as one of the most successful College music societies. In fact, the Chorus Secretary of CUMS has been heard to remark that he treats the St Margaret Society chorus as CUMS chorus number two! High praise indeed!

The Bats

1979-80

President: S. J. Roberts
Secretary: G. M. Hunter
Senior Treasurer: Mr Wright
Junior Treasurer: J. R. Owen
Equipment Manager: K. J. Dinnage
Committee: J. J. Bell, S. K. Cherry, S. J. Fry,
A. Goldman, J. S. Kershaw, J. C. V. Thomas,
B. P. Taylor.

For BATS 1980 will be remembered for the skeleton, the chamberpots, and a demonstration during the first night in Cloister Court. The year has been a successful one which leaves BATS in a strong position both in terms of support from within the College, and financially. As usual we staged two main and two late night shows at the A.D.C. and took a pantomime around the local schools, as well as putting on the ever-popular May Week.

Our first play of the year was John Arden's *Sarjeant Musgrave's Dance*. This was a powerful production on a stark, brilliantly lit scaffolding set. In the middle was a trunk out of which popped a skeleton halfway through the evening. This may have posed headaches for the Props Manager, but not on the scale suffered by his counterpart on the late night show, who had to find no less than twenty porcelain chamberpots, only to see them smashed at a rate of four a performance. This was for Jeremy Bell's production of Feydeau's farce *The Purging*; a fine example of French lavatorial humour in which a constipated child refuses to take his laxative, but a visiting businessman gets an overdose of it by mistake.

For May Week BATS put on one of Shakespeare's less well known plays, *All's Well That Ends Well*, directed by Simon Cherry. This got off to an inauspicious start on the opening night: the first half was marred by feminists protesting at the College stag night, and the deluge in the second half made the lights go out, forcing a retreat by all concerned to the Old Hall where the proceedings were finished off in exceedingly cramped conditions. Thereafter it went without a hitch and proved to be a great success.



The Bats, 'All's Well That Ends Well'

In the Michaelmas term our main show, Ben Jonson's *Volpone* was a joint production with the A.D.C. This arrangement was forced upon us when our intended director (not a Queensman) failed his exams. However, it worked very well, we played to full houses and Stephen Fry, in the title role, demonstrated that he can do a pretty good imitation of Kenneth Williams.

The Late Night was almost as popular. Called *The Thirteen Clocks*, it was an adaptation of a fairy story by James Thurber, featuring goodies and baddies, a dumb blonde of a princess and an evil baron who spent his time place-kicking puppies. To round off the year BATS embarked on their annual U.K. tour with their home grown panto.

This took in such far-flung locations as the schools of Ely and Mildenhall and as usual as much fun was had by those participating as by the audience.

1980-81

President: K. J. Dinnage
Secretary: J. C. V. Thomas
Senior Treasurer: Mr Wright
Junior Treasurer: S. J. Fry
Equipment Manager: P. Wibberley
Committee: J. S. Kershaw, W. Sibree, H. R. Dixon,
P. McCormack, A. Lewis, C. Graves, M. Croft,
E. Ap Hywel, M. Kalman, J. Willett

Queens' Bench

1979-80

President: D. W. K. Armitage
Secretary: J. Moakes
Treasurer: A. D. Darwin

The Queens' Bench was again well supported, particularly among the Freshmen, many of whom rushed to join the society on arrival in Cambridge.

The meetings of the Lent Term 1979 were addressed by several interesting speakers and there was a very successful visit to Bedford prison in March.

The Michaelmas Term saw only one meeting, addressed by Herbert Robinson from Camden Borough Council who spoke on his work as a legal advisor to the Council. There were frequent attempts to get a High Court Judge but these were fruitless. At the end of this term the Queens' Bench held its first professional evening where a number of lawyers in different stages of their career came to talk informally to the members of the society. The guests included barristers, law students, and solicitors.

The society plans to have at least three meetings in the Lent Term, hoping to hear from a lady judge, Fenton Bresler and the deputy managing director of Capital Radio.

The society would like to extend its thanks to Professor Stein, Mr Tiley, Dr Napier and Dr Gray for their support and encouragement throughout the year.

1980-81

President: C. St J. Penney
Secretary: B. A. Young
Treasurer: A. Hammerton



'The Medical Society'

Medical Society

1979-80

President: T. Q. Howes
Secretary: C. A. J. O'Kane
Treasurer: D. G. Jewson

1980 was another active and enjoyable year for the Medical Society. Speakers in the Lent Term included Dr Carroll of Surrey University, on "The Migraine Field" and Mr R. W. Nevin, formerly Dean of St Thomas's, who gave a very interesting talk on "The Art of Diagnosis".

Dr Bull, in the guise of "Stewart Burrows Snr.", made a startling and much appreciated assault upon the College Smoking Concert. With a backing chorus of first-year medics and vets, and the assistance of Dr Holmes (as Hardy Annual, a surgeon) and Simon Howell (as Susie Gray, a corpse), he delighted the audience with a collection of humorous songs.

An experimental luncheon party in the Lent Term was very successful and has now been adopted as an annual event in addition to the May Week garden party.

With the Michaelmas Term came a particularly large medical intake, including six women. Speakers for the term included Mr Fuller, of St Bartholomew's Hospital, on "A Cut-Throat Profession"; Mr Fiddion, from Luton, on "The Anaerobic Era"; and Professor Sleight, from Oxford, on "Stress and the Circulation". Dr M. J. Howell gave an amusing and, we must admit, enlightening talk on "The Trouble with Sex".

The annual dinner was well attended and enjoyed by all. Professor Sir John Butterfield, our guest of honour, and the President, on behalf of the society, both paid tribute to Dr Bull in this, his final year as Director of Medical Studies at Queens'.

We wish the departing members well in their clinical careers. Dr J. Holmes and Dr G. Cormack are welcomed as Vice-Presidents of the society. We thank Dr Bull for the use of his rooms.

Would all old Queensmen who have passed through the hands of Dr Bull and would like to attend the May Week garden party please write to the Secretary for details.

1980-81

President: J. M. Price
Secretary: M. T. Seymour
Treasurer: J. M. Starr

Classical Society

1979-80

President: T. W. M. Dillon
Secretary: N. G. Davies

We have enjoyed a very successful year, entertaining guests from the University as well as members of the College. The Society has been fortunate in being able to provide speakers from all over the country. Most recently in the Michaelmas Term Dr Paul Cartledge, lecturer in Ancient History, delivered a paper (of clearly popular interest) on "The historian's view of Greek Tragedy", producing evidence to show that the state-money we spend on the Theatre is paltry compared to that spent by the Athenians. Sir Charles Willink of Eton College, in presenting a scholarly analysis of the Orestes of Euripides, argued that the tragedies were written primarily for sheer enjoyment, not for theological or moral explanation. Dr Janko of Trinity College gave a very enjoyable talk on the fascinating forgery by Dictys of Crete, who attempted to pre-date the Iliad with an epic in Latin.

A revival of play-reading for one of our meetings, the sine qua non of earlier years, is planned for the future.

Our thanks are due to Dr Diggle for his support and kind hospitality.

1980-81

President: K. L. Harris
Secretary: I. R. Forsyth

History Society

1979-80

President: K. A. Salkeld
Secretary: P. J. Ullmann
Treasurer: G. S. Garnett

The Queens' History got off to a good start this year with two evening talks in the Michaelmas term. These were from Dr Margaret Spufford who gave a fascinating insight into seventeenth century literacy with illustrations from contemporary sources, and Mr Gerald O Tualaigh of the University of Galway (presently on sabbatical at Peterhouse) who talked about twentieth century Irish politics. Owing to the widespread resurgence of interest in this subject, the latter talk drew an exceptionally large audience from all over the university.

Two further talks are initially planned for the Lent term: it is hoped that Dr Baker will deliver a farewell lecture to the society, which will doubtless be accompanied by the consumption of a vast quantity of cheap wine. We also look forward to the first talk to be delivered to the society by Dr Baker's successor, Dr Towle. However the most important event of the year will undoubtedly be the Annual Dinner at which Mr Keith Thomas of St John's College, Oxford has kindly consented to be the guest of honour.

The Committee thank all Queensmen (and women) for their continued support with special thanks to Mr Hebblethwaite for the use of his rooms for society meetings. Finally we should like to welcome our new Fellow, Dr Towle and to wish Dr Chris Baker every future success.

1980-81

President: P. J. Ullmann
Secretary: J. G. O'Higgins
Treasurer: J. C. V. Thomas
First Year Representative: C. Cohn

Christian Union

1979-80

College Representatives: J. F. Stuart, G. P. Aylett.

Queens' College Christian Union is a part of the C.I.C.C.U. (Cambridge Inter-Collegiate Christian Union) and shares its threefold purpose: to present the claims of Jesus Christ to our fellow students, to unite and encourage his followers here, and to promote members' involvement in God's worldwide plans.

The first aim has found expression throughout the year in various ways, informally and through sermons, talks and discussion groups. The major event of the Lent Term was a week-long mission to the University organized by the C.I.C.C.U., when Dr Billy Graham challenged us to "Reckon with God". We are very grateful to the Rev. Jonathan Fletcher of St Helen's, Bishopsgate, who helped us with the mission on a College level. This was an exciting time, and the effects can still be seen.

We believe that lasting changes can only be achieved by

God's power, and so we should rely on him in prayer for all our activities. The weekly College prayer meeting has been low in numbers over the last term, but Bible Studies (in groups of around seven or eight) and prayer partnerships (in pairs) have been more encouraging recently. Seven groups meet weekly for Bible study, and help to fulfil the second aim above. The third aim is expressed in the contact each group has with a Christian working overseas.

We have held two houseparties over the last year. The first was held at the end of the Lent Term at the Pickenham Centre, Norfolk, and was led by Peter Hutchison, Fellow of Sidney Sussex College. We concentrated on faith, hope and love with especial reference to Paul's Letter to the Colossians. The Rev. Peter Templeman (Chaplain at St John's College) conducted the second houseparty at the end of the summer vacation. It took place at Hengrave Hall, near Bury St Edmunds, and was very useful in preparing for the coming year.

We have also enjoyed some excellent talks at our informal Sunday lunches, including "The Christian Fight", given by Canon Mark Ruston, "Who is Jesus?", by Rev. Dr Roy Clements, "A Missionary in Pre-War China", by Dr Cater, and a talk on the Christian Union over the last ten years by Dr J. M. Holmes.

We are very grateful to all our speakers, and to God for providing so richly for us over this last year.

1980-81

College Representatives: T. M. W. Green, N. J. Macnaughton

Film Society

This year saw the Film Society finally being taken under the protective wing of the JCR. Unfortunately it was only then, of course, that real profits began coming the way of our hardy and dedicated crew. Continuing the policy of showing more popular (i.e. money-making) films, we have been able to present a very successful programme. "Monty Python and the Holy Grail" had its usual triumph, and there were full houses for "Carrie", "Midnight Express", "Young Frankenstein" and "Everything You Wanted To Know About Sex But Were Afraid To Ask". It may perhaps be said that over the years Queens' has built up a good reputation for films; we enjoy a high-class clientele drawn from all over the University as well as from the College.

Following consistent demand we also presented the acclaimed "Bring Me The Head of Alfredo Garcia"; 12 people enjoyed (sic) that one. Not so good — the film that is.

The retiring officers this year were P. F. Holman and M. L. R. Robinson to whom we extend our thanks and appreciation. If anyone would like to help in the running of the Film Society, their assistance would be most welcome.

1980-81

President: P. A. Bacon
Treasurer: A. Hong
Secretary: I. R. Forsyth

Sporting and Other Activities

Officers of Clubs 1980-81

	<i>Captain</i>	<i>Secretary</i>	<i>Treasurer</i>
Association Football	B. A. Young	R. J. Whitehead	A. P. Curry
Athletics	T. Eglon		
Badminton	R. J. Whitehead	K. W. Stokes	N. P. Davies
Boats	A. J. Tyler	R. J. Ridley	M. J. Fallen
Bridge	R. H. Bigley	H. C. Snow	M. J. Smith
Chess	M. J. Smith	S. R. Weatherill	K. L. Harris
Cricket	I. G. Jones	G. Prescott	P. J. Rogers
Cross Country	T. Eglon	P. H. Haynes	
Darts	S. A. Harmsworth	D. Cohen	R. S. Harrison
Hockey	A. G. Torrance	S. K. Smith	G. Prescott
Karate	M. Katesmark	M. L. R. Robinson	
Rugby	P. J. Rogers	R. M. J. Chapman	C. S. Savage
Sailing	J. M. Duck		
Squash	A. J. Haigh	D. C. O'Donoghue	D. M. Reid
Swimming & Water Polo	D. B. Marshall	N. G. Walker	P. B. Gaunt
Lawn Tennis	C. G. Hull	P. A. Fletcher	C. J. Arnold
Table Tennis	M. Walmsley	I. G. M. Mackley	D. M. Reid
Tiddlywinks	N. F. J. Inglis	M. J. Smith	T. C. Carden

Queens' Groundsman



G. J. Barker retired in August 1980 after more than 40 years at the College sportsground. Geoff Barker was appointed assistant groundsman in 1934 to work under Bill Gordon, but in 1939 was immediately called up (as a member of the Territorial Army) to serve in the 2nd Cambridgeshire Regiment. Two days after his marriage to Ivy the regiment was sent out to Malaya, where Geoff Barker was captured by the Japanese and spent the remainder of the war as a POW. At the end of the war he returned as assistant groundsman, taking over as groundsman in 1951. For much of the time since then he has looked after the ground single-handed, a job which must have become easier when the Barkers moved into the new Venn pavilion in 1964.

As groundsman, Geoff Barker was always firmly in control of what happened at the sportsground. Some old members of the College will remember that no amount of special pleading would change his mind about arranging matches on Sundays or playing on an unfit pitch. Few will forget the great loyalty, enthusiasm and interest he felt for the various sports teams, and the efforts he took to ensure that the ground was in good condition. Mrs Barker also played a large part in making the ground a friendly place by providing memorable teas, a now traditional custom which she began in the old pavilion after Geoff took over as groundsman. We will miss the Barkers, and wish them well in their retirement.

W.A.P.

Boat Club. Once again it has been a year of mixed fortunes for the Club. The First Eight fell into the Second Division in both the Lents and the Mays, in contrast to the Second Boat who performed excellently all year. In the Lents, the lack of any colours resulted in an inexperienced boat, which was unfortunate to be involved in a re-row on the Thursday morning, and never recovered its composure. The return of several oarsmen for the Mays strengthened the Club, and a First Eight of considerable potential emerged. However, training was severely disrupted by injury and the boat finally assembled too late to do itself justice.

Undoubtedly the major success of the year was the Second Eight which continued from the Fairbairns as a stable and successful boat. They convincingly won their blades in the Lents and in the Mays came close to repeating the feat, missing their final bump by inches whilst climbing back into the Second Division.

Of the lower boats, the Third Eight composed entirely of novices performed creditably in both the Lent and May bumps. The now traditionally large number of gentleman's boats was once again on the river, with ten boats in training and eight eventually racing with varying degrees of success.

The new academic year 1980-81 has seen a slow strengthening of the Club. An early victory over Magdalene encouraged us in the Coxed Fours events before defeat by a strong Pembroke crew. In the Fairbairns the First Eight improved its position by four places after some rather disjointed training. The arrival of Mark Gritten in Cambridge has strengthened our coaching team, but perhaps the most encouraging aspect has been the performance and enthusiasm of the novices. One novice boat reached the final of the Plate in the Clare Novices Regatta after an unlucky defeat by Selwyn, the eventual winners. A Four from this boat competed in the Emmanuel Sprint Regatta and won, taking vengeance on both Selwyn and Churchill with some splendidly aggressive rowing.

The arrival of women in the College has necessitated the formation of a Ladies section at the Club which immediately produced an enthusiastic Ladies Eight which competed in the Clare Novices and the Emmanuel Sprints. N. D. K. Prosser rowed in Goldie in the Boat Race and freshman S. A. Harris is currently training with the C.U.B.C. squad.

Rugby. After having been knocked out of the Cuppers competition early in the Lent Term by St Catharine's, the most important event of the Queens' rugby calendar for early 1980 was the French tour at Easter. This proved to be a demanding two weeks with five fixtures and a great deal of travelling. For the most part the squad of twenty three were based in Olaron St Marie, a small town in the Pyrenean foothills, notable not only for its fine rugby club but also for the patience and friendliness of the inhabitants. It was in Olaron that Queens' played three of the five tour matches, a fourth was also played at a small village outside the town.

The size of Olaron proved to be no measure by which to judge the quality of their rugby. After having narrowly beaten the High School team, Queens' went on to lose the two remaining matches in Olaron and also to the invitation side played at the village of Buzy. However, the results did nothing to damage the morale of the Queens' side which remained buoyant throughout despite finally

falling victim to C.R.E.P.S. Bordeaux on the return journey.

The season for 1980/81 opened well with an influx of fresh talent in the first year and the consistently good results showed that this talent was not being wasted. Not until Queens' met Fitzwilliam in November was the run of victories momentarily upset. The cumulative results of the League to date reflect this success with Queens' lying in second place, two points behind Fitzwilliam and two points ahead of third place Trinity who are the only team yet to be played in the League.

Apart from these League achievements, Queens' have also played Walcha, an Australian touring team, which was the cause of the second defeat of the season so far. There were also teams from Caracas University and from Heidelberg, both of whom were beaten. Mid Michaelmas Term there was also a weekend tour to Oxford to play Keble College and Trinity College, adding two more victories to the season's list.

The Second Team have had a more chequered season than the First Team which will nevertheless secure a safe position in Division Two of the League.

Altogether a very successful year which raises high hopes for this year's Cuppers and the Easter tour to Heidelberg.

Association Football. After the disappointment of relegation in the Michaelmas Term the First XI recovered well to reach the quarter finals of Cuppers beating Magdalene and King's before going out to Selwyn. Both the 3-1 win against Magdalene and the 3-0 win against King's were good solid team performances but the quarter finals saw a blustery day reduce the match to one of two halves of completely differing character. Having established a 3-0 lead in the first half we let in three goals in the second half to lose 3-4. Needless to say the team were as sick as parrots!

The second division season started with a much depleted team, five of last year's First XI remained and the rest of the team was made up from freshers and previously unknown second year footballers. There was also Rod Whitehead? Hoping for a quick return to the first division we started strongly, beating St John's II 3-0 and drawing against Magdalene. We then suffered a number of setbacks managing only a further two victories, both 6-1 wins against Sidney Sussex (Rick Andrews being foiled on numerous occasions by their Falcon's keeper) and Corpus Christi (Bryan Young completing his season with four goals). Special thanks should be extended to Nick Knight who performed splendidly in goal, saving us on many occasions. Other notable performances were turned in by Matt Bullock, who adopted a "hard man" approach in many of the games waiting only a few minutes before putting in a crunching tackle and then sympathising with the referee when the other team complained, Rick Andrews, P. Price (who often insisted on wearing a dress to play in), Kevin Lloyd (an astute tactician and prolific goalscorer, usually at the wrong end), Howard Williams and Peter Harris.

The end of term tour saw a dishevelled team arrive in Oxford to play two matches against average opponents. Ken Wagstaff put in good performances, belying his normal third team reputation. Rod Whitehead "played". Steve Jones staked a preference for sleeping on the floor and Kevin Lloyd wasn't too sure about how far his car

would go. Matt Bullock was on a spying trip, looking for new talent.

The second team enjoyed another good season missing promotion by one point, no doubt a result of their tartan Captain, while the Third XI won one of their games 6-1 (R. Pimlott, their Captain, didn't score).

Hockey. The 1980 Lent Term saw the return of former Captain Nick Birchall to the First XI with the effect that even more strength was added to an already strong defence. Skipper Jim Price continued to dominate play from midfield while Jerry Bell, another former Captain, had an excellent term at left back. The goal drought of the previous term continued but consistent performances resulted in Queens' finishing a creditable fifth in the first division of the inter-college league. Meanwhile the Second XI, under Tim Chamberlain, managed to maintain their second division status.

At Easter the Club took a squad of fourteen players to the Clacton Hockey Festival for the first time. This proved to be a most enjoyable occasion on and off the field, with Queens' winning half of their games.

At the beginning of the 1980 Michaelmas Term Andy Torrance took over the captaincy from Jim Price who is to be congratulated on gaining a place in the Blues squad and representing the Blues ten times during the term. Congratulations are also due to freshman Phil Barr, an outstanding goalkeeper, who has gained a permanent place in the Wanderers' team. However, this was not a successful term in the league, with both the First and Second teams finishing the term in the relegation zones of the first and second divisions respectively.

Cricket. The Club lost six of its fifteen matches and won only three. A very necessary rebuilding process was masterminded by Stuart Warrington, whose captaincy was shrewd, kind, courteous and a triumph of management. The team spirit which he engineered enabled the 96% washed out tour to Devon to be a reasonable success.

In batting, it was good to see the Old Guard doing well. The rapture on Howard Jones' face following the delivery of an off-side half volley and John Twigg's cultivated dourness did much to educate the youngsters in the aesthetic appreciation of the game. Jim Price worked hard to achieve a greater consistency and Giles Brown was as boisterously flamboyant as ever.

The bowling burden was impressively shouldered by the substantial Mark Wiggett, who failed by just 10 wickets to set a new College record aggregate. He will be sorely missed. Mark Hull and Gordon Prescott managed considerable turn on the dusty pitches of May, but the latter's eccentricities of length often failed to press home advantages against teams batting second.

That the fielding standard was abysmal was graphically illustrated during the first round Cuppers defeat by Magdalene, who cruised to victory embarrassingly ruthlessly after being held for three quarters of the match. It was generally accepted, however, that groundwork was entertainingly poor, and the performances of Brown, Prescott and Harold Snow in particular provided ample amusement.

Cross Country. The Lent Term 1980 saw the culmination of the Inter-College league with Queens' finishing second overall to St John's. Queens' were also

placed sixth in the Selwyn relay (third Cambridge College) with N. Dorey recording the fastest lap overall.

This academic year has seen Queens' fighting to retain their position near the top of the league. In the two matches each against two other Colleges, Queens' were placed second and first. With two matches to come the team has a good chance of being placed third overall.

In Cuppers this November the team suffered from the large gap between the third and fourth scorers and slipped to seventh place. In a field of over 130 T. Eglen won with P. Haynes fourteenth and B. Young eighteenth. As a result these three were selected for the Varsity, 2nd and 3rd team matches respectively with Eglen captaining the Cambridge team, finishing fourth individually.

Athletics. On a College level the only fixture of 1980, as usual, was Cuppers which took place last October. Unfortunately Queens' again had a minimal team comprising four athletes with only T. Eglen winning his event, the 3000 metres.

At University level last summer both N. Dorey and Eglen competed in the Varsity match with Dorey being awarded his full blue for his fine performance in being placed second in the 1500 metres.

Swimming and Water Polo. The Club began in 1980 by continuing the previous term's unbeaten run in Cuppers. The greatest hurdle came in the semi-final against St John's, where the defeats in the previous two meetings were made good by a 5-4 win. After this match the Cuppers final was something of a formality, and Queens' carried off the cup with little difficulty.

In the Easter Term the Swimming Club, as always, had to cope without its Blues, giving rise to some fine individual performances in Swimming Cuppers. Overall Queens' managed to gain a very creditable third place.

In the Michaelmas Term the Club was back to Water Polo, and carried on where it had left off the previous year. The team's successes were helped considerably by the continued turn-out of Dave Wrigley, and by new freshman Edward Beele, who also plays for the University, along with the Captain Dave Marshall. Having lost only to St John's, we are second in the league again, and hope once more for success in Cuppers, with perhaps a final against St John's to gain our revenge for the Michaelmas defeat and keep the Cup.

Lawn Tennis. Our 1980 summer season was mixed. We lost to Trinity in the first round of the cup: their side contained mostly University First VI players! Queens' I was in the second league, and Queens' II in the fifth. Results: Queens' I: lost to Emma, Pembroke and Churchill; won against Caius and Downing. Queens' II: lost all except against Fitzwilliam III.

Both teams came between the middle and bottom of their leagues. Second league competition was keen, and our first team's losses were marginal. Chris Hull awarded all of the First VI colours: Chris Hull and Neil Pike (Pair 1), Chris Arnold and Jonathan Gilbert (Pair 2), and Paul Fletcher and Andy Haigh (Pair 3). The first and second pairs played especially well, and those they lost were often on a tie-break.

We thank Patrick Frew for captaining the Second VI, and Mr and Mrs K. C. Mills for the high standard of the teas and grounds' maintenance.

Finally, thanks must go to Mr Geoff Barker, who retired last year after many years of fantastic groundsmanship.

Squash. 1980 was a year of little moment as regards College squash. A lack of consistency prevented the first team from winning promotion to the first division. The second team, regrettably, were relegated and all other teams maintained their positions. Cuppers was similarly unsuccessful, Queens' losing to Downing in the first round.

The new academic year has seen an improvement in our fortunes and promotion now seems likely, the First team having lost once throughout the Michaelmas Term. Of the other teams, the Seconds and the Fourths may conceivably move up. A Ladies team was formed this term, but has so far played only friendly matches. It is to be entered into the League in the new year.

Badminton. Throughout the Lent Term, the First, Second and Third Teams continued their success of the previous year. The First Team moved up to finish second in the First Division, having lost only two matches all year. The Second Team completed the season top of the Third Division despite being demoted the previous year. The Third Team, also in the Third Division had equally consistent results and finished a creditable fourth place.

At the end of the Easter Term four experienced First Team players left the College which has made winning in the First Division much tougher for the present First Team.

Due to a fall in the number of freshmen playing Badminton compared to the previous year we have been forced to drop the Fourth Team. This, although regrettable, has meant that competition for places in the remaining teams has increased.

The College has continued to retain the Sunday practice sessions at Portugal Place and hopefully this will benefit the results in 1981.

Cruising Club. 1980 saw the University Cruising Club complete its move to the recently acquired gravel pit at Milton, fifteen minutes bike ride from College. A dinghy park has been constructed to hold the Club's boats, one of which is the Queens' Lark. Unfortunately Lent Term Cuppers was affected by the cold weather, but in the summer the three windsurfers proved very popular with those determined to master the art of "doing it standing up".

The past term brought with it renewed interest in sailing activities. Members of the College have attended a beginners course at Grafham, participated in the National Students Sailing Championship, and organised windsurfing tuition. Interest has also been expressed in windsurfing competition and it is to be hoped that this idea will be realised in the coming year.

Table Tennis. Last season saw Queens' continue to establish a reputation as one of the strongest Colleges both in strength and in depth. Much of the praise for this achievement must go to Niall Campbell who put in a lot of effort to ensure that we could run six teams; in fact none of the teams lost a match by default. Niall was also a vital member of the first team squad with Bernard Abrams, Stuart Smith and Ian Mackley which maintained a creditable place in the first division and which, together with Mark Walmsley, won Cuppers for the second year running. He was also chosen with Stuart

and Bernard for the University fourth team squad which won promotion in the Cambridge league.

The Michaelmas Term has seen a good influx of freshers to maintain the strength of all teams, with two, Janice Suddaby and Christine Malpass, being chosen for the first team squad: and so we can look forward to another successful season for the table tennis club.

Chess. Queens' Chess has regrettably followed a path of decline in enthusiasm throughout 1980. At the start of the year we were finally forced to abandon efforts to raise a third team; entering 1981, the second team have had to seek postponements due to inability to find five players.

The year began with the first team's league title hopes disappearing in a 1-4 loss to eventual champions Trinity. However a strong Queens' rally secured second place — much credit is due to captain Paul Bancroft who had a 75% success rate in his games for the College over the year.

In Cuppers, Queens' defeated Pembroke, Sidney Sussex and King's to reach the final where we met Selwyn, surprise victors over Trinity earlier in the competition. On a hot early summer afternoon, it was Selwyn who emerged winners.

The second team suffered relegation from division two.

The Queens' team for the 1980/81 season is potentially strong but we have met with great difficulty in assembling a full strength side for any match. However, since opening the season with a 1-4 reverse at the hands of Corpus Christi, the team has reached the New Year without losing another game. Selwyn, Churchill and Trinity II were all beaten by the narrowest margin, while the match with St John's finished 2½-2½. Queens' stand well in the league behind inevitable pacesetters Trinity.

The second team have been less successful, despite the strenuous efforts of Captain Mark Hurst, and have yet to win a match.

One must hope for increased interest in Queens' Chess in 1981, and the team will also strive for a good performance in Cuppers, in which we meet Corpus Christi in Round One.

Bridge. This was a year of mixed fortunes for the bridge club. The first team of J. Bergwerk, R. Bigley, D. Nussbaum and S. Johnson reached the semi-finals of Cuppers where they defaulted the match because three of the team had imminent finals and no suitable date could be found. None of the other five teams got further than the second round, the main problem being that of conflicting interests. This necessitated bringing in reserves at short notice, for example only one member of the team for the second team's first match also played in their second. The same problem afflicted the club nights which were eventually stopped because of lack of support, in spite of Bob Bigley's work and enthusiasm. Hopefully there will be more general enthusiasm and success in the coming year.

Darts. 1980 began with the A-team in the first division and the B-team in the second division and ended with the A's in the first division, the B's in the second division and the new C-team in the fourth division. During the year however, the A's and B's did very passable imitations of yo-yos. In the Lent Term the A's found the going difficult and were narrowly relegated while the B's stormed into the first division one memorable night at Girton. The Christmas Term saw new blood and enthusiasm injected into the club, so much so that we were able to start a C-

team which, although obviously strong, was forced to start life in the fifth division. Ably captained by Andrew Wardle and losing only once they won the division fairly easily. The B's however, though strenuously captained by Daniel Cohen, found life in the top division too hard and descended gracefully into the second. The A's, captained(?) by Simon Harmsworth, kept up Queens' interest in the first division next term by winning every match to head the second division.

So, in the main, it was quite a successful year. Although the A's and B's ended as they had begun, we now have a strong C-team making its way up the leagues. Indeed, we hope there is enough enthusiasm within the college to start a ladies team.

Tiddlywinks. Queens' has once again dominated the Cambridge Winks scene with splendid performances in Cuppers; we finished with three teams in the top four, the competition culminating with Queens' II's victory over Queens' I in the final, which was played on the Erasmus Lawn during May Week. There is no reason why this year's competition should not prove equally successful.

The Michaelmas Term began with an encouragingly large number of freshers at the squash, but only one first year Winkette has played regularly. This is a great shame as there is a danger of there being no-one to inherit the legacy of the College's most successful club.

Several members of the club won their Quarter Blues at the end of the term in the resounding Varsity Match defeat of Oxford, thus ending a truly great year for Queens' Tiddlywinks.

Queens' Men in the North-West

The Thirtieth Annual Dinner for Queens' Men in the North-West was held at the Old Vicarage Hotel, Stretton, near Warrington on Friday 28th March 1980. The Rev. B. F. F. Crane presided and nineteen members of the College were present. The Guest of Honour was Dr M. M. Bull, and the toast to the College was proposed by Dr J. M. Newberry. The next dinner will be at the same Hotel on Friday 10th April 1981. This year the Guest of Honour will be Dr C. J. Pountain. Enquiries should be addressed to the Rev. B. F. F. Crane, 6 Ridgefields, Biddulph Moor, Stoke-on-Trent, ST8 7JE (Tel. Stoke-on-Trent (0782) 513752).

Queens' Men in the South-West

The eighth Annual Dinner for Queens' men in the South-West was held on May 2nd 1980 at the County Hotel, Taunton and the sixteen members present comprised most of our 'regulars' together with a few 'first-timers'. We should welcome more of the latter especially those who were in residence in the sixties and seventies. The Guest of Honour was Dr J. T. Green whose lively speech

was appreciated by all those present. The next dinner will be on Friday May 8th 1981, again at the County Hotel, Taunton. E. W. Chanter of Malsover, Calverleigh, Tiverton EX16 8BA (Tel. Tiverton 2220 but liable to be changed to Tiverton 253315) will be responsible for the arrangements and will be pleased to answer any enquiries. The Guest of Honour will be Mr I. R. Wright.

Deaths

We regret to record the following deaths:

A. A. G. Whitehouse, B.Sc. (London) (1897)
 The Rev. E. H. Smith (1906)
 The Rev. Prebendary E. G. T. Simey (1908)
 G. M. Wylie (1909)
 The Rev. N. Miller (1910)
 O. H. Best, LL.B. (1912)
 The Rev. Canon J. R. Wilkinson (1912)
 W. H. S. Curryer (1913)
 R. D. Keane (1914)
 J. G. Williams (1914)
 G. S. W. Evans, M.D., F.R.C.G.P. (1915)
 The Rev. S. G. Budgett (1919)
 The Rev. L. W. Foster (1919)
 N. Smedley, F.S.A., F.M.A. (1919)
 J. R. Bazeley (1923)
 R. E. Green, F.I.M.A. (1924)
 L. W. R. Cox (1927)
 C. M. Kidd, LL.B. (1927)
 E. F. Sawyer (1929)
 T. Crippin (1930)
 H. P. Whiting, D.S.C., Croix de Guerre, Ph.D. (1931)
 E. M. James (1933)
 N. F. Tucker (1934)
 P. H. L. Ling, T.D. (1935)
 F. A. R. St John, M.B., B.Chir. (1935)
 A. W. Simmins, M.B., B.Chir. (1935)
 B. C. L. Keelan (1936)
 C. M. A. Bathurst (1937)
 A. D. K. Peplow (1937)
 C. A. Moodie, M.B., Ch.B., F.R.C.Path. (1940)
 P. Brodetsky (1942)
 The Rev. W. A. H. Todd (1942)
 A. M. Cowland, O.B.E. (1944)
 J. W. Draper, M.R.C.S., L.R.C.P. (1944)
 Professor G. A. Cranfield, Ph.D. (1946)
 M. Emerson, Dip.F.E., C.Eng., M.I.Mech.E. (1948)
 Professor W. Hagenbuch, O.B.E. (M.A. 1949)
 The Rev. P. H. C. Jennings (1949)
 J. H. Casson, M.B. B.Chir. (1961)
 Air Commodore M. W. Palmer, R.A.F.(Retd) (1961)
 G. R. Jones (1963)

News of Queensmen

Distinctions

Baron, as Lord Harris of High Cross: R. Harris (1945).
 C.M.G.: M. E. Heath (1945).
 C.B.E.: E. H. Nicholls (1945).
 C.B.E.: P. D. Storie-Pugh (1937).
 O.B.E.: E. M. F. Payne (1927).

Ecclesiastical

- The Reverend Canon Ronald E. Adeney (1937) is Chaplain of Wrexham Park Hospital and Priest-in-charge of Fulmer, near Slough.
- The Reverend S. G. Bowen (1965) is Vicar of Felbridge, East Grinstead.
- The Reverend Canon K. E. Brown (1940) is Canon of Salisbury Cathedral and Rural Dean of Devizes, Wilts.
- The Reverend J. L. Chater (1951) is Rector of Wraxall with Failand, Bath and Wells.
- N. S. Cooper (1972) is training for the Church of England Ministry at Ripon College, Cuddesdon, Oxford.
- The Reverend W. K. Gathercole (1951) is Minister of St Andrews-with-Newland United Reformed Church, Lincoln.
- The Reverend G. F. Grobecker (1946) is Archdeacon of Lynn, Norfolk.
- The Reverend D. L. Harper (1970) is Deacon in the Parish of St Peter and St Paul, Mansfield.
- The Reverend N. H. P. McKinnel (1972) is serving in the Parish of St Mary's, West Kensington.
- The Right Reverend G. J. Paul (1939) is Bishop of Blackburn.
- The Reverend B. G. E. Pettifer (1952) is Director of Pastoral Theology at Salisbury and Wells Theological College.
- The Reverend Canon Mark Santer (1957) is Bishop of Kensington.
- The Reverend J. P. Smith (1977) is Deacon in the Parish of All Saints', Gosforth.
- The Reverend Dr Alan Sowerbutts (1973) is Vicar of St James, Lower Darwen, Diocese of Blackburn.
- The Reverend S. Tatton-Brown (1967) is Priest at St Gabriel's Church, Ashton-under-Lyme.

Educational

- R. E. Allsop (1959) is Professor of Transport Studies, University College, London.
- H. Bird (1964) is Lecturer in Rheumatology in the University of Leeds.
- C. R. Burn (1964) is Music Specialist at Munich European School.
- D. Curtis (1965) is Technical Adviser to the Ministry of Health and Social Services, Bermuda.
- H. Garth Dales (1963) is Reader in Analysis, School of Mathematics, Leeds University.
- J. Gibson (1946) was awarded a Ph.D., London University (1979), and has published an edition of the Complete Poems of Thomas Hardy.
- K. J. Gray (1969) is a University Lecturer in Law, Cambridge.
- J. Heathcote (1973) is Research Fellow, Department of Geological Sciences, University of Birmingham.
- P. G. Hryczyszyn (1976) was awarded the J. B. Montagu Pupillage Prize by the Masters of the Bench of the Middle Temple.
- D. E. Hutchinson (1973) is studying for an M.Sc. in Geotechnical Engineering at the University of Alberta, Edmonton, Canada.
- John Leather (1968) is Visiting Lecturer, Electrical Engineering Department, Imperial College, London.
- D. A. S. Lees (1973) is teaching Physics at Harnham High School, Bristol.
- Alan Thomson (1956) is Senior Lecturer in History, Hatfield Polytechnic.

Other

- W. M. Ainley (1973) is an articled clerk at Law in Toronto, Canada.
- P. M. Allan (1973) is a geophysicist with British Petroleum Co. Ltd. in Stavanger, Norway.
- K. Ball (1967) is a Senior Research Engineer with Ruston Diesels Ltd., Newton-le-Willows.
- J. M. M. Banham (1959) is a Director of McKinsey & Co. Inc., Management Consultants.
- C. J. Brady (1970) has joined McKinsey & Co. Inc., Management Consultants, London.
- H. J. McK. Bull (1963) is Consultant Gastroenterologist to Worthing and Southlands Hospital.
- I. F. C. S. Clayre (1954) is managing the International Hospitals Group, Abu Dhabi, United Arab Emirates.
- A. Gil (1972) is an Official of the International Labour Organisation in Geneva.
- F. S. Goldby (1956) has been elected F.R.C.P.
- W. J. Grose (1943) is Chief Planning Officer, Bracknell District Council.
- P. A. Harlow (1976) is an actuarial student with Equity and Law, High Wycombe.
- G. Kemball-Cook (1973) is a Research Officer with the National Institute for Biological Standards and Control, Hampstead.
- John Leather (1968) is Senior Scientist with Shell Research, Thornton Centre, Cheshire.
- C. Lee (1952) is Senior Research Manager with Beecham Products.
- K. Mackenzie (1973) is Flight Lieutenant, Commanding Aircraft Servicing Flight, R.A.F. Bruggen, West Germany.
- J. H. R. Newey (1941) became a Circuit Judge assigned to Official Referee's business.
- Delbert D. Smith (1966) is Senior Vice-President, Corporate Affairs, Comsat, Washington D.C., U.S.A.
- P. D. Southwick (1972) is a Research Engineer with Inland Steel Research Laboratories, East Chicago, Indiana, U.S.A.
- R. H. Swanton (1963) is Consultant Cardiologist to the Middlesex Hospital.
- C. S. B. Swinley (1920) has been assisting New Zealand television with a documentary on the Battle of Crete.
- D. A. Walker (1958) is an Assistant Director, Bank of England.
- D. F. Webster (1964) is Chief Housing Officer (Housing Plan) with Glasgow City Council.

The Keeper of the Records is always pleased to receive items for insertion in the 'News of Queensmen' column.

The Years 1974-1977

Men matriculated in 1974 and just eligible for the Degree of Master of Arts.

Ecclesiastical

- P. J. Stone is a Clerk in Holy Orders.

Educational

- P. A. Bowyer is studying Wave Research at the Department of Oceanography, University College, Galway, Ireland.

- R. D. Cash is completing a doctoral thesis on the Marxist Dialectic at University College, London.
- R. A. B. Cross is Lector in English at the University of Zagreb, Yugoslavia.
- J. R. Death is teaching History at Palmer's Sixth Form College, Grays, Essex.
- P. E. Earl is a Lecturer in Economics at the University of Stirling.
- I. D. Edge is a Lecturer in Law at the School of Oriental and African Studies, University of London.
- A. S. England is a Chemistry Teacher at Roedean School, Brighton.
- J. S. Glynn is researching Elizabethan acting and stage conditions for a Ph.D. at the Birmingham University Shakespeare Institute.
- T. M. Guy is a Lecturer in Geology at Yale VI Form College, Wrexham, Clwyd.
- P. N. Hardy is a Ph.D. student at Darwin College, Cambridge.
- D. T. Hughes is a Research Student at Aston University.
- P. V. Jameson is a Teaching Assistant/Ph.D. student at UMIST.
- R. J. Knott is a postgraduate student at the Royal Academy of Music, studying singing.
- T. P. Mitchell is a Research Student in Near Eastern Studies at Princeton University, currently completing two years' field research in Egypt.
- R. K. Mowbray is Assistant Classics Master at Sedburgh School, Cumbria.
- M. A. F. Raw is a Schoolmaster at Cranbrook School.
- C. F. Ross is a Research Fellow of Queens' College.
- M. J. Simon is a Research Student in the Department of Applied Mathematics.
- G. K. Sinclair is a School Teacher at The Edinburgh Academy.
- R. J. Snow is a Research Fellow at Columbia University, New York.
- A. Vickerman is a Research Student at Queens' College.
- D. J. Wrigley is a Research Fellow at Peterhouse.

Legal

- A. C. Barker is a Lawyer with Webster & Sheffield, New York City.
- R. Brackenbury is a Solicitor in Nottingham.
- R. A. Wilson is a Solicitor with Laces & Co., Liverpool.

Medical

- A. J. Ainsworth is a Junior Hospital Doctor at Royal Hallamshire Hospital, Sheffield.
- N. G. Bruce is a Junior Hospital Doctor in Tunbridge Wells.
- N. A. Channing is House Surgeon at William Harvey Hospital, Ashford, Kent (until Feb. 1981) then House Physician at St Mary's Hospital, Eastbourne (until Aug. 1981).
- R. F. T. Gilbert, having completed a Ph.D. in Pharmacology, is now studying Medicine in Cambridge.
- M. J. D. Goodfield is a House Physician at Addenbrooke's Hospital (until 31 Jan. 1981).
- A. R. Green is a Doctor practising in Farnborough.
- R. C. Hill is a Vet practising in Aylesbury.
- A. T-C. Ho is a House Surgeon at West Suffolk Hospital, Bury St. Edmunds.
- R. A. Kock is a Veterinary Surgeon with Kluth Oxenham Partners, Bitterne, Southampton.

- P. M. le Feuvre is a Medical Practitioner at the Royal Surrey County Hospital, Guildford.
- J. R. Lowes is a House Physician at King's College Hospital, London.
- J. P. Weaver is a Veterinary Surgeon, at present temporarily working in Zambia.

Other

- S. Allison is Group Pricing Supervisor at Perkins Engines Ltd., Peterborough.
- J. M. Austin is a Planning Assistant (Economics) in the National Bus Company Planning Department, Oxford.
- D. W. Backhouse is a Chartered Accountant in the Training Department of Price Waterhouse & Co., London.
- M. P. B. Bale is a Chartered Accountant with Peat Marwick Mitchell & Co., London.
- I. C. Bandy is a Senior Scientist at the London Research Station of the British Gas Corporation.
- P. J. Bassett is a Planner at Group Head Office of The British Petroleum Company Ltd. He is also a Councillor and Opposition Chief Whip for the London Borough of Greenwich.
- P. C. Bennett is Assistant Librarian at the Treasury and Cabinet Office Library.
- T. M. Blackburn is a Chartered Surveyor with the British Rail Property Board, Eastern Region Office, London.
- C. W. Brown is a Materials Engineer with Rolls-Royce Ltd., Derby.
- R. A. G. Brown is a Market Development Executive with United Glass Ltd., Weybridge.
- P. M. Carew is an Electrical Site Engineer with Messrs Kennedy & Donkin, Consulting Engineers, and is presently working at Kilroot Power Station, Carrickfergus, Northern Ireland.
- F. H. Christiansen is an Architect in his own practice in Porsgrunn, Norway.
- D. G. D. Clark is an Electronics Research Engineer with Thorn E.M.I. Central Research Laboratories.
- I. M. Corkett is Editor of The Madeira Magazine in Madeira, Portugal.
- M. Davidson is an Electronics Engineer with Rank Strand Electric.
- S. T. Davies is a Chemical Engineer working in Computer Aided Design for I.C.I. Ltd., Runcorn.
- P. R. Evans is a Civil Servant at the Department of Energy.
- P. M. Freedman is a Management Consultant in London with Deloitte Haskins & Sells.
- A. S. Giles is designing pages for Yorkshire Post Newspapers' Prestel Database.
- A. G. M. Goodrich is an Accountant in London.
- A. W. Goudie is a Research Officer at the Department of Applied Economics, Cambridge.
- P. Greengrass is a T.V. Journalist with Granada T.V., Manchester.
- A. C. Heeler is a Systems Analyst for Logica Ltd. in London.
- S. M. C. Horton is a Student Speech Therapist.
- M. I. Johnson is a Trainee Chartered Accountant with Deloitte Haskins & Sells.
- G. H. Kearley is a Management Trainee with Midland Bank Ltd., London.
- S. Kearsley is a Computer Officer with Cambridge University Computing Service.

S. W. Kidd is an Economist in the Corporate Planning Department of The Steetley Co. Ltd., Worksop.
 R. A. Kirk is engaged on Laser Fusion Target Research at AWRE Aldermaston.
 J. C. Lewis is a member of the European Space Agency, working in the Space Science Division at ESTEC, Norderwijk, Holland.
 M. C. Y. Lewis is a Theatrical Producer/Director in London.
 A. H. Lyons is an Engineer at the Manufacturing Research Department of Westland Helicopters Ltd., Yeovil.
 S. J. Mackay is a Projects Co-ordinator with Golden Guinea Breweries Ltd., Umuahia, Nigeria.
 E. C. M. Macleod is a Researcher.
 J. C. Mansfield is a Design Engineer for ITT Components Group at Paignton.
 C. Mason is an Accountant with Price Waterhouse & Co., Birmingham.
 M. H. Massy is a Maintenance Engineer with CEGB.
 A. M. Newman is an Actuarial Student with Messrs. Lane, Clark and Peacock.
 M. T. Newman is an Insurance Broker at Lloyds of London.
 I. J. Nichol is a Chartered Accountant with Thornton Baker in London.
 M. L. Norton is a Systems Engineer with IBM UK Ltd.
 J. S. Ord is a Lieutenant in the United States Marine Corps, engaged in geographic and political intelligence analysis at the Fleet Intelligence Center Europe and

Atlantic, under Commander in Chief Atlantic Fleet and U.S. Navy Europe.
 D. G. Palmer is a Shipping Manager in Sydney.
 R. J. Pearson is a Chartered Surveyor, and Manager of Kenneth Ryden & Partners' Aberdeen Office.
 G. J. Reid is a Fleet Operator with British Petroleum Tanker Co.
 E. A. Robson is an Hotelier — Manager of the Regency Club in Hyatt Regency, Washington.
 I. Salkeld is an Audit Supervisor for Coopers & Lybrand.
 W. S. Sellwood is a Post Office Telephonist.
 N. A. Sharpe is a Management Consultant with Arthur Andersen et Compagnie, Paris.
 P. D. Spencer is a Development Engineer with Quantel Ltd. (Digital video products).
 M. J. Stafford is a Retail Group Co-ordinator with W. H. Smith & Son Ltd.
 N. S. G. Swan is a Mechanical Engineer working for Shell UK Oil.
 D. Taylor is a Research Assistant in the Department of Metallurgy, Cambridge.
 M. C. Tomkinson is a Systems Engineer with Negretti Automation.
 S. R. Turner is an Investment Analyst for ANZ Banking Group Ltd., Melbourne.
 M. P. Wakem is a Development Engineer with Ricardo Consulting Engineers, Shoreham-by-Sea.
 K. D. Ward is a Civil Servant (Scientific M.O.D.).
 A. H. Williams is a Higher Scientific Officer with the Home Office Scientific Advisory Branch.

Queens' College Club

<i>President:</i>	D. W. Bowett, Q.C.	1948
<i>Vice-Presidents:</i>	The Rt. Rev. C. R. Claxton	1923
	Sir Arthur Armitage	1933
	H. C. Belk	1921
	L. V. Chilton	1923
<i>Secretary:</i>	M. M. Bull	1933
<i>Treasurer:</i>	N. F. Hughes	1937

Committee Members

<i>Until 1981</i>		<i>Until 1983</i>	
A. S. F. Butcher	1944	K. C. Bailey	1928
M. D. M. Parkes-Bowen	1942	N. De.B. Corbin	1942
C. V. T. Walne	1961	P. A. Kitchin	1962
M. J. D. Bown	1951	D. K. Prosser	1947
<i>Until 1982</i>		<i>Until 1984</i>	
J. M. Riley	1950	F. F. C. Edmonds	1920
M. M. Scarr, G.M.	1933	P. J. Cox, Q.C.	1941
G. C. Horton, D.S.C.	1933	O. D. H. Cox	1951
		J. W. Sutherland	1941

The Annual Meeting was held on Saturday, 14 June. The Treasurer reported that 130 new members had joined the Club. Over 140 members were present at the Dinner.

The dates of the next two meetings will be Saturday, 20 June 1981 and Saturday, 19 June 1982.



This long-case clock appeared at an auction in Andover during 1980. It has no maker's name, but bears the inscription QUEENS COLLEGE CAMBRIDGE on its dial. Does anyone recognise the clock or know how it came to leave the College? If so, please write to the Junior Bursar at Queens'.

The May Ball 1981

The Queens' May Ball is to be held on Tuesday June 16th 1981 in the college grounds, by kind permission of the Governing Body. Provisionally the line-up is for a well known rock band (Mud), high class jazz, a cabaret, gambling, food stalls, a barbeque with suckling pig, a cocktail bar, punts, films, a fortune teller and much more besides. High quality sparkling and still wines will be

served all night. Tickets are 59 guineas, including full dinner in the New Hall, 49 guineas without dinner, full English Breakfast and sitting-out rooms extra. These prices compare favourably with other balls this summer. Application forms available from Julian Thomas, Queens'.

Addresses Wanted

It will be of great service to the College if members will kindly use the enclosed slip to inform the Keeper of the Records of any change in their permanent addresses or in those of their friends.

