

## 'Renaissance Queens' Project Website Now Online!



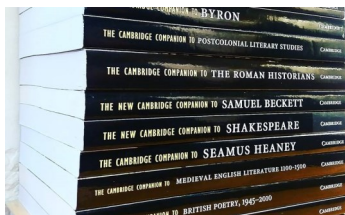
[queensoldlibrary.org](http://queensoldlibrary.org)

As part of our 'Renaissance Queens' Heritage Lottery Fund cataloguing project we have been digitizing images of attractive and unique features from the Old Library's wonderful early books and making them available online via a (fast expanding) project website. You can now [browse images](#) of bindings, inscriptions, doodlings, & notes left by Tudor readers that reveal fascinating insights into how books were read & College connections with the wider world of Renaissance learning. Please see also an online version of last term's hugely successful (800+ visitors!) [Erasmus](#)

[Exhibition](#). As well as taking a closer and more detailed look at exhibits you can download pictures and access exhibition literature, including the exhibition booklet. The website also offers a glimpse of some of the much appreciated public and schools outreach events that have been organised in conjunction with our Renaissance Queens' project.

### Do you have great skills in palaeography?

Please help us to decipher some of the medieval and early modern inscriptions and annotations that reveal the stories behind our old books by leaving comments against images on the project website.



### Ordering books for Queens' Library

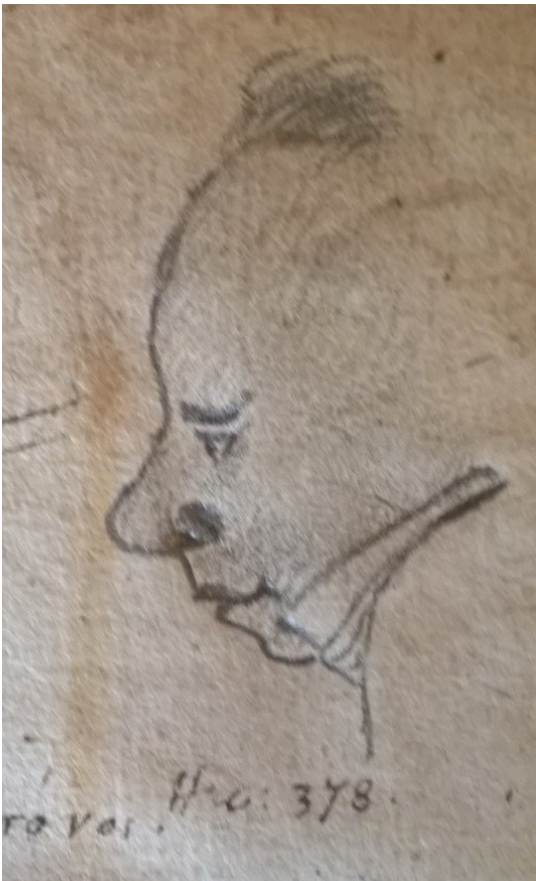
Need an undergrad book that is not in Queens' Library? Please remember we welcome orders either via the Queens' [online book order form](#), or just speak to us next time you're in the library.

## There's more to life than **Google!**

Save time, astound your DoS/supervisor, and raise your game (academically speaking) with your ability to evaluate, locate and organise essential and rare information in your subject area by attending one (or two!) of the sessions being offered by Dr Tim Eggington (College Librarian) & Hayley McLellan (Library Grad Trainee), taking place next week at the following times:

1. Undergrad online literature searching in the Arts/Humanities/Social Sciences/Sciences 1.00-2.00 (CC43) & 5.30-6.30 (DD47) on Monday 23 Jan
2. Building Bibliographies using Zotero (free online bibliographic management system): 1.00-2.00 (CC43) & 5.30-6.30 (CC43) on Tuesday 24 Jan
3. Advanced Lit Searching: Google Scholar versus Web of Knowledge/Scopus: 1.00-2.00 (Erasmus Room) & 5.30-6.30 (CC43) on Wednesday 25 Jan

Email [library@queens.cam.ac.uk](mailto:library@queens.cam.ac.uk) to book your place!



## Queens' Library 4-minute survey

*Do you enjoy using Queens' library? Are there ways in which our services can be improved? We'd love to hear your feedback on our library and its services. On 6 Feb we will be distributing the Queens' College Library survey to let you tell us how we're doing (closing date: 17 Feb). So look out for the link in your email, and don't miss the chance to have your say and win a £20 Heffers book token!*

(left): Former Queens' Greek professor drawn by one of his students? The mystery remains in this 1597 edition of Euripides' *Tragedies* in Greek

### This term's Old Library workshops

Missed the Michaelmas workshops? Not to worry! To find out about the wonderful collection in Queens' Old Library and learn about rare books more generally come along to one of our 60-min OL Workshops on 24 Feb @ 9.00am or 28 Feb @ 19.00pm led by Tim Eggington (College Librarian) and Lucille Munoz (Rare Books Cataloguer).

Numbers are limited to 7 per session; to avoid disappointment please book early!



### Do you have trouble finding books in the library?

The [University Library's 'FutureLib' Tracker Project](#) has spent last term exploring the difficulties encountered by students when searching for books on library shelves. One of the main findings of the project was that effective and well-placed signage can help students to locate books more quickly, and so over the next few months we will be looking at our library signage in the WML to see how we can help you to find books more easily. Any feedback on this would be greatly appreciated. Please contact Lucy Woolhouse (Reader Services Librarian, [library@queens.cam.ac.uk](mailto:library@queens.cam.ac.uk)).

