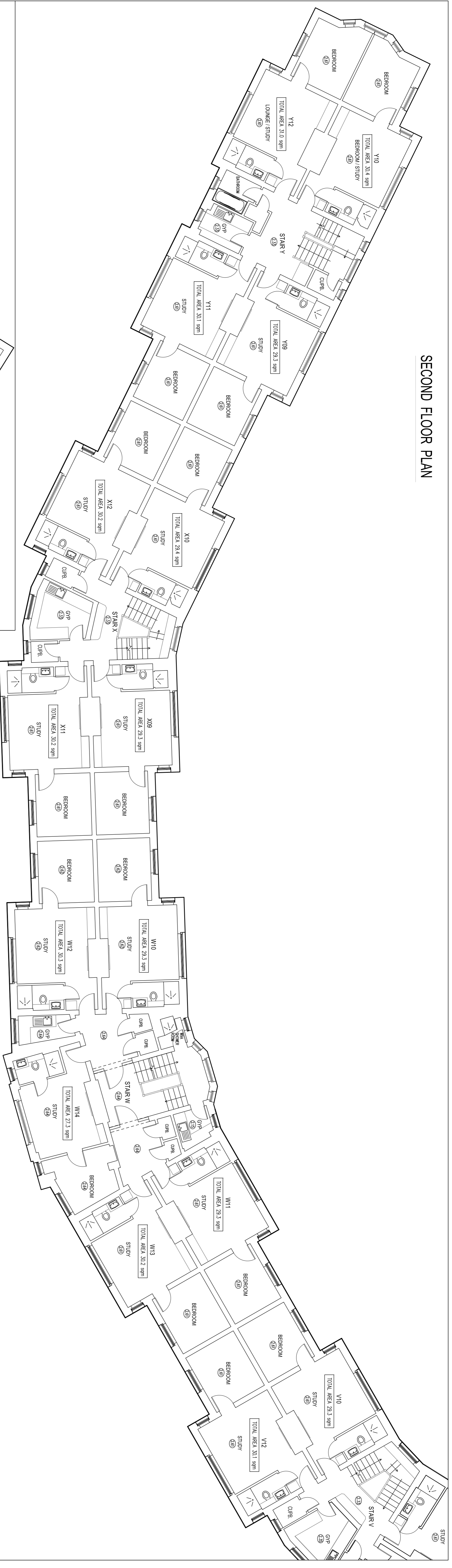


SECOND FLOOR PLAN

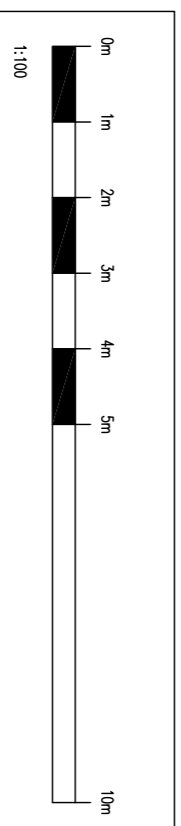


SECOND FLOOR PLAN



LEGEND

| | | | |
|---|----------------------------|---|---|
| ⬇ | Telephone Socket | ⬆ | Key Symbol For Direction Of Sloping Ceilings |
| ⬇ | Elther Mtl Socket | ⬆ | Key Symbol - Up Direction Of Stairs, Floors etc |
| ⬇ | TV Aerial Socket | ⬆ | Key Symbol For Floor To Ceiling Heights |
| ⬇ | Fire Alarm Break Glass | ⬆ | Change In Floor Construction etc |
| ⬇ | Fire Alarm Sounder | ⬆ | "Hidden" Detail Under Stairs etc |
| ⬇ | Fire Extinguisher | ⬆ | Walls & Slab Detail |
| ⬇ | Smoke Detector | ⬆ | Turnover/ Beam/ Road Lights etc |
| ⬇ | Smoke Detector | ⬆ | Fractured floor level value |
| ⬇ | Illuminated Fire Exit Sign | ⬆ | Height of window sill and window head from FL |
| ⬇ | Single Supply Socket | ⬆ | |
| ⬇ | Double Supply Socket | ⬆ | |
| ⬇ | Single core Light Switch | ⬆ | |
| ⬇ | Radial Switch | ⬆ | |
| ⬇ | Router | ⬆ | |



NOTES

SURVEY TIED INTO NATIONAL GRID OSTN12 AND OSN402 DATUM FOR HEIGHT USING GPS EQUIPMENT UTILIZING THE TRIMBLE VRS NOW SYSTEM FOR REAL TIME KINEMATIC (RTK) CORRECTIONS NATIONAL GRID SCALE FACTOR HAS NOT BEEN APPLIED TO THE SURVEY UNLESS SPECIFIED

DRAINAGE AND SERVICE INFORMATION SHOWN ON THIS SURVEY HAS BEEN OBTAINED BY VISUAL INSPECTION ONLY, ALTHOUGH ALL POSSIBLE CARE HAS BEEN TAKEN TO ENSURE THAT DETAILS SHOWN ARE CORRECT, WE ARE UNABLE TO ACCEPT ANY RESPONSIBILITY FOR COSTS ARISING OUT OF ANY ERRORS OR OMISSIONS. COPYRIGHT: THIS DRAWING MAY NOT BE REPRODUCED IN ANY FORM WHATSOEVER WITHOUT THE CONSENT OF C J SURVEYS LTD.

C J SURVEYS LTD
LAND | BUILDING | ENGINEERING
PROFESSIONAL MEASURED SURVEYS

CLIENT: QUEENS COLLEGE

PROJECT: SECOND FLOOR LAYOUT PLAN
 FISHER BUILDING, QUEENS COLLEGE, CAMBRIDGE

DATE: MAY 2019
 DRAWN: GSI/CJ
 SHEET SIZE SCALE: A1 1:100
 DRAWING NO.: 03919F-53

TEL: 01638 591031 | MOBILE: 07945 779545
 WWW.WEBSURVEYS.CO.UK | EMAIL: MEAS@SJSURVEYS.CO.UK