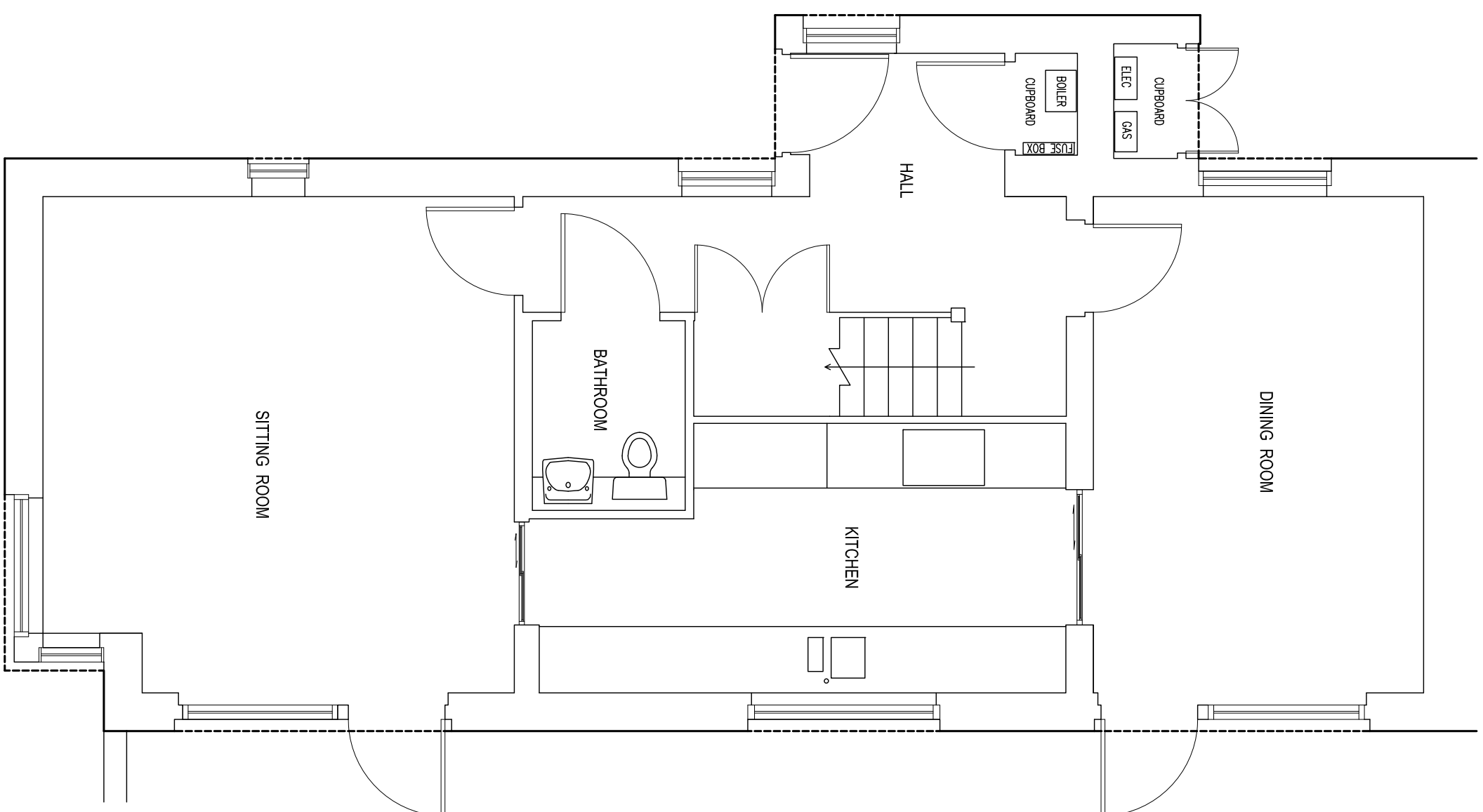


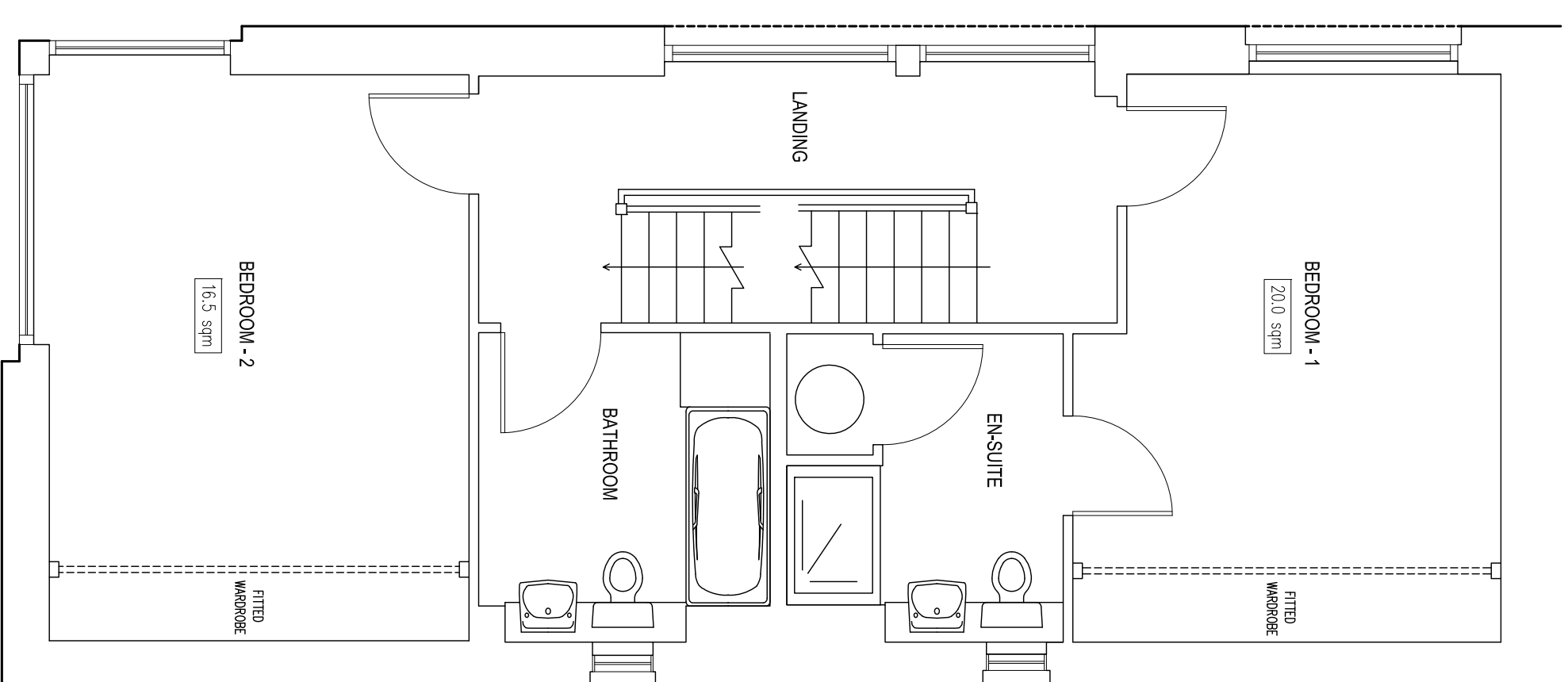
**GROUND FLOOR PLAN**

TOTAL FLOOR AREA = 633.6sqm



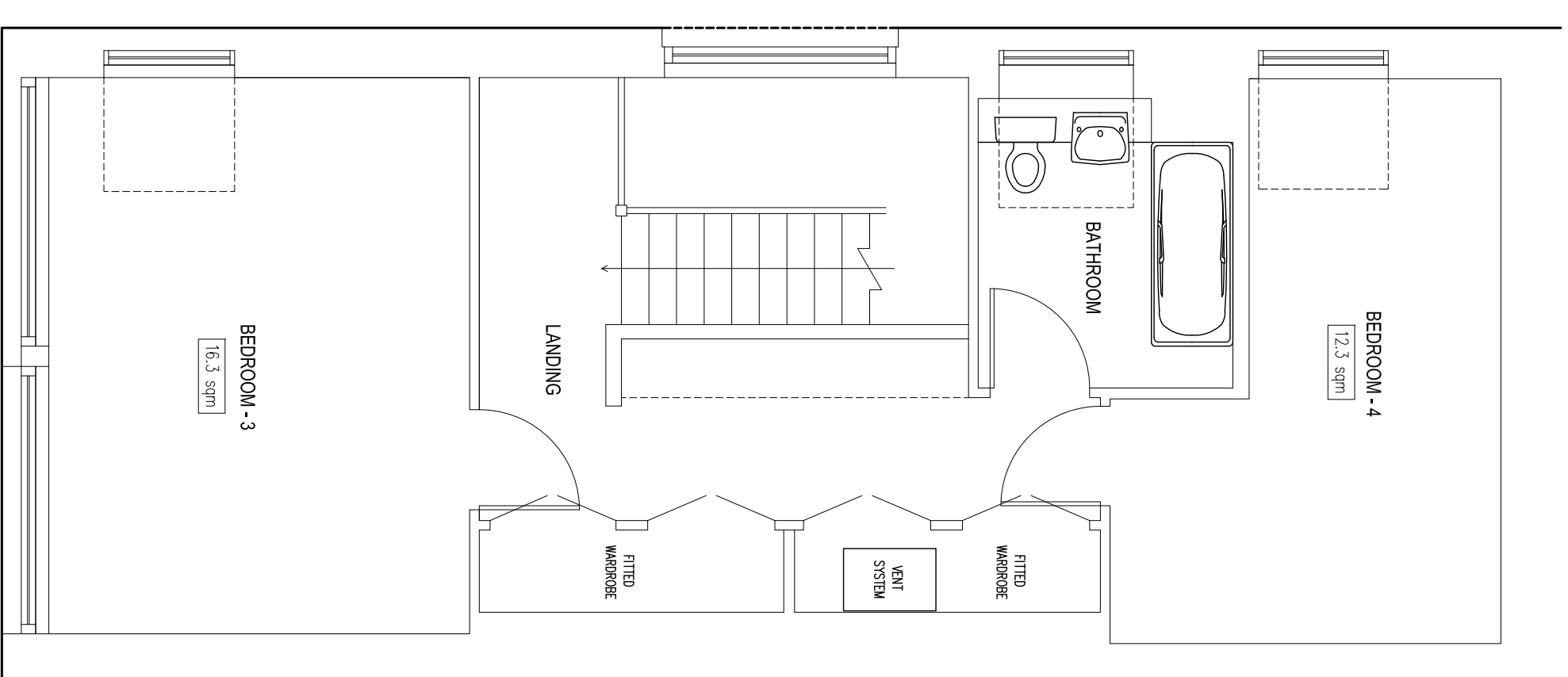
**FIRST FLOOR PLAN**

TOTAL FLOOR AREA = 573.9sqm



**SECOND FLOOR PLAN**

TOTAL FLOOR AREA = 55.2sqm



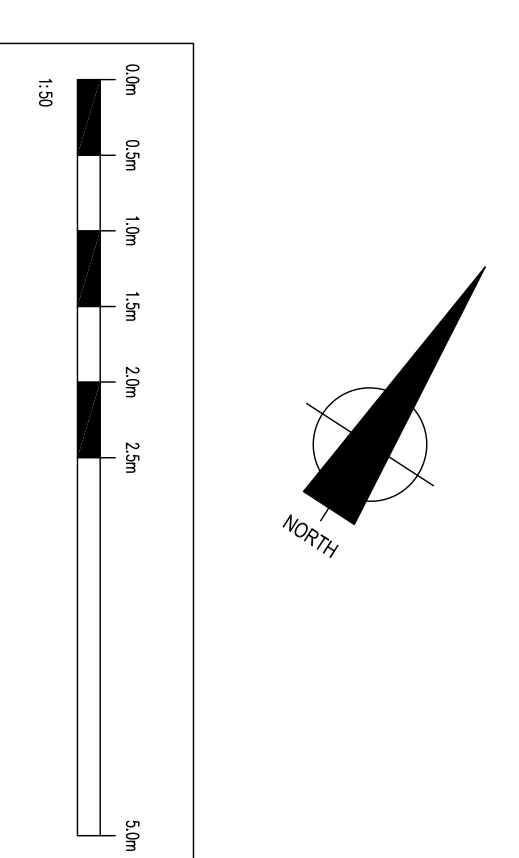
**NOTES**

SURVEY TIED INTO NATIONAL GRID OSTN12 AND OSGM02 DATUM FOR HEIGHT USING GPS EQUIPMENT UTILIZING THE TRIMBLE VRS NOW SYSTEM FOR REAL TIME KINEMATIC (RTK) CORRECTIONS NATIONAL GRID SCALE FACTOR HAS NOT BEEN APPLIED TO THE SURVEY UNLESS SPECIFIED

DRAINAGE AND SERVICE INFORMATION SHOWN ON THIS SURVEY HAS BEEN OBTAINED BY VISUAL INSPECTION ONLY, ALTHOUGH ALL POSSIBLE CARE HAS BEEN TAKEN TO ENSURE THAT DETAILS SHOWN ARE CORRECT, WE ARE UNABLE TO ACCEPT ANY RESPONSIBILITY FOR COSTS ARISING OUT OF ANY ERRORS OR OMISSIONS. COPYRIGHT: THIS DRAWING MAY NOT BE REPRODUCED IN ANY FORM WHATSOEVER WITHOUT THE CONSENT OF CJ SURVEYS LTD.

**AMENDMENTS**

REVISION	DATE	REMARKS
A	MAY 2021	BEDROOM AREAS ADDED.



**C J SURVEYS LTD**  
 LAND | BUILDING | ENGINEERING  
 PROFESSIONAL MEASURED SURVEYS

CLIENT: QUEENS COLLEGE

DATE: JAN 2021 | DRAWN BY: CJ | SHEET SIZE SCALE: A1 | 1:50

PROJECT: GROUND, FIRST & SECOND FLOOR LAYOUT PLANS | DRAWING NO. 01821/RVW2 | REV/A

Contact: Tel: 01638 591031 | Mobile: 07945 775645 | Email: me@cjsurveys.co.uk | Web: www.cjsurveys.co.uk