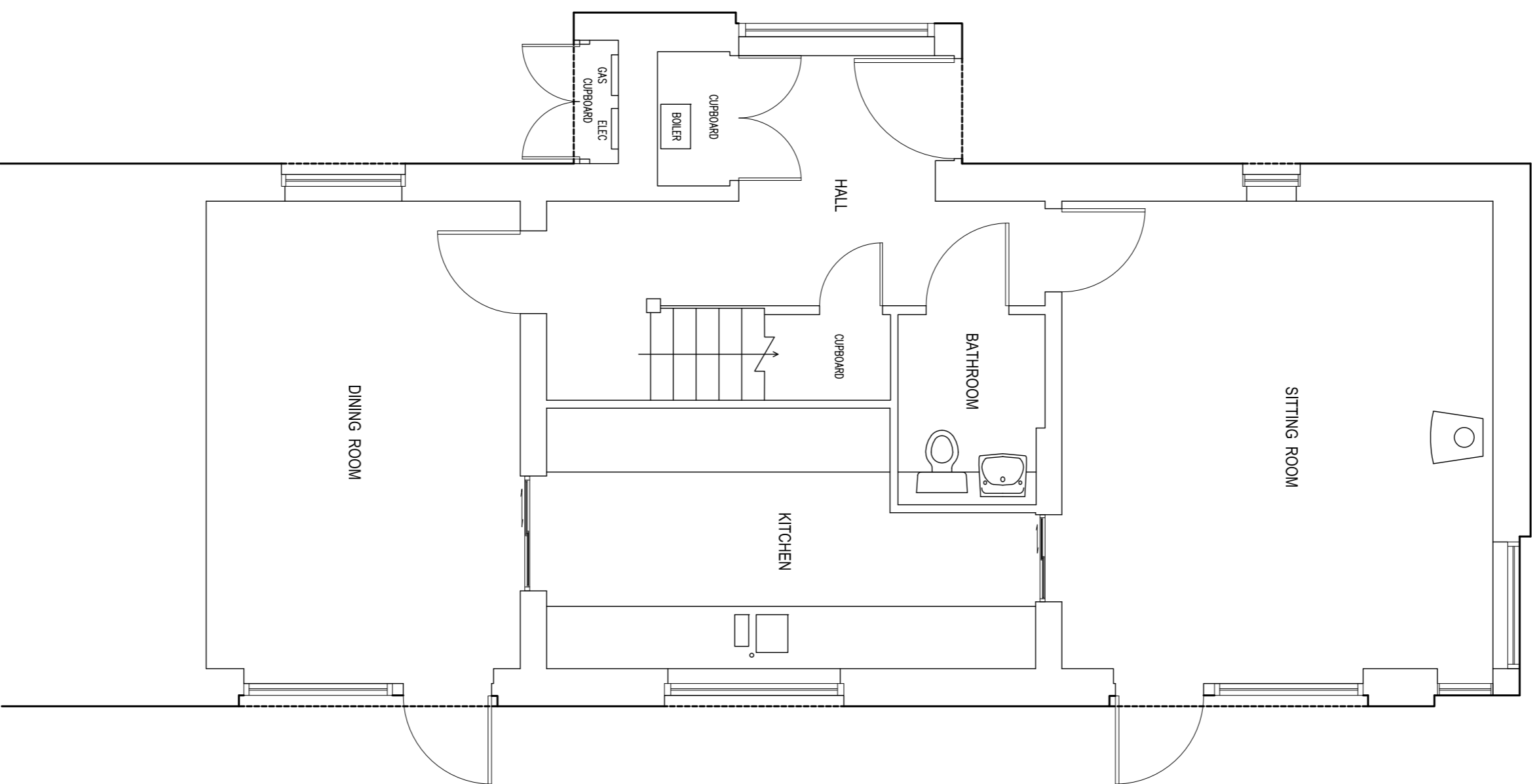


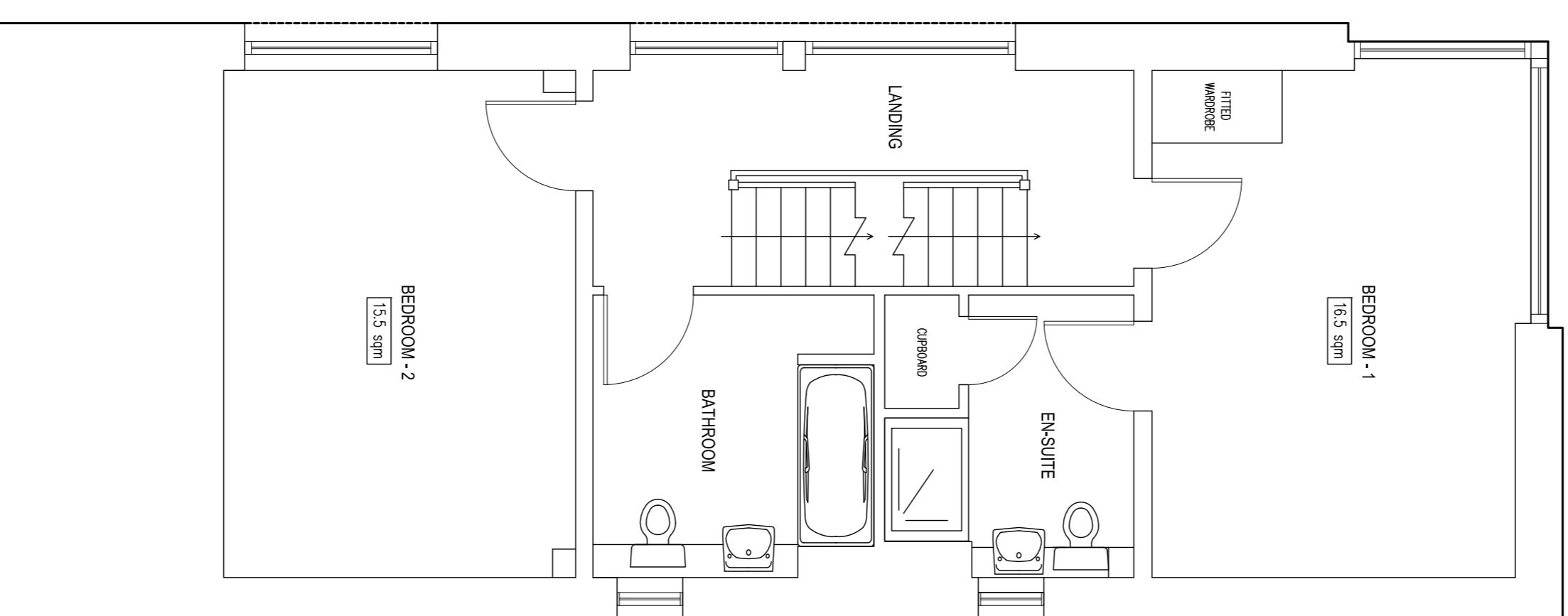
**GROUND FLOOR PLAN**

TOTAL FLOOR AREA = 65.5sqm



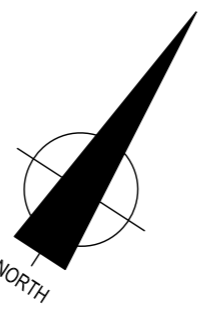
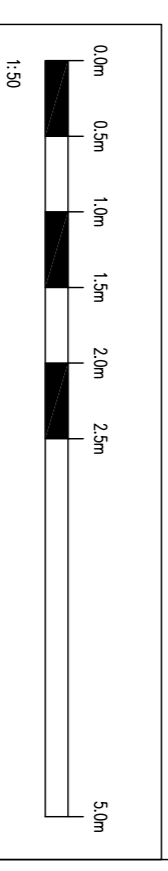
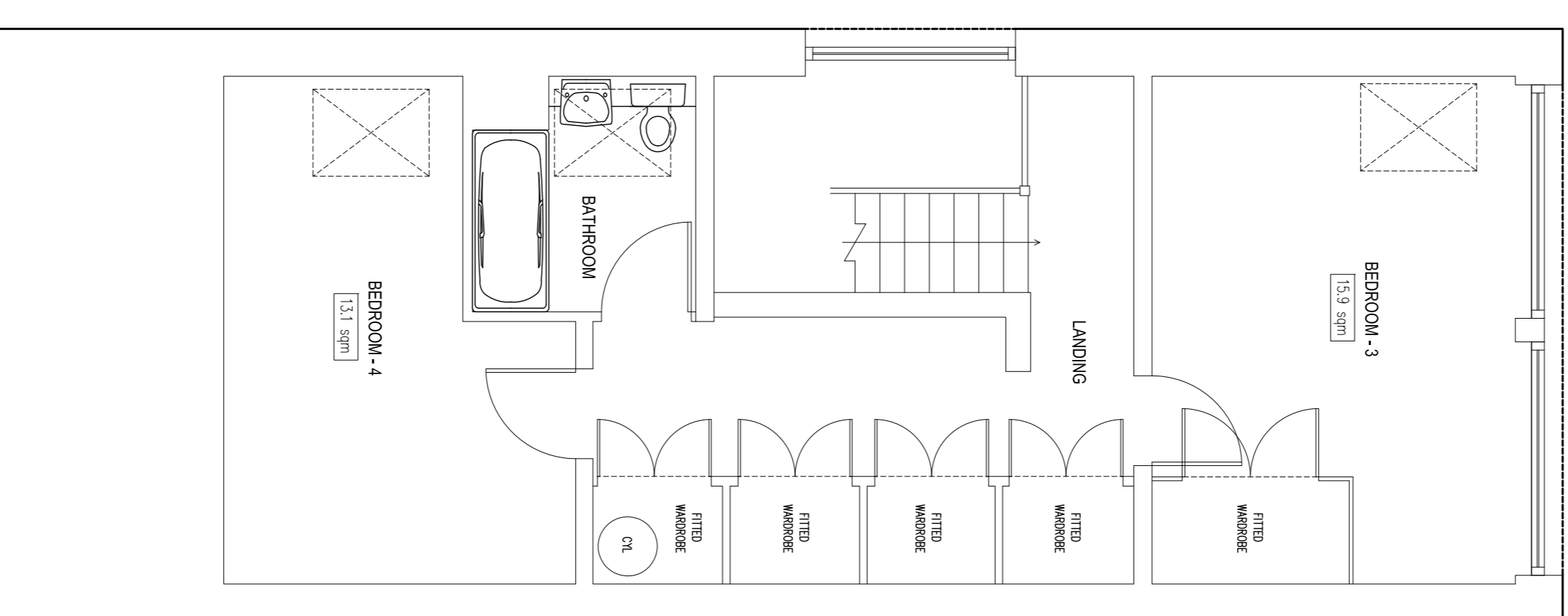
**FIRST FLOOR PLAN**

TOTAL FLOOR AREA = 57.2sqm



**SECOND FLOOR PLAN**

TOTAL FLOOR AREA = 56.7sqm



**NOTES**

SURVEY TIED INTO NATIONAL GRID OSTN2M2 AND OSQ2M2 DATUM FOR HEIGHT USING GPS EQUIPMENT UTILIZING THE TRIMBLE VRS NOW SYSTEM FOR REAL TIME KINEMATIC (RTK) CORRECTIONS NATIONAL GRID SCALE FACTOR HAS NOT BEEN APPLIED TO THE SURVEY UNLESS SPECIFIED

DRAINAGE AND SERVICE INFORMATION SHOWN ON THIS SURVEY HAS BEEN OBTAINED BY VISUAL INSPECTION ONLY, ALTHOUGH ALL POSSIBLE CARE HAS BEEN TAKEN TO ENSURE THAT DETAILS SHOWN ARE CORRECT, WE ARE UNABLE TO ACCEPT ANY RESPONSIBILITY FOR COSTS ARISING OUT OF ANY ERRORS OR OMISSIONS. COPYRIGHT: THIS DRAWING MAY NOT BE REPRODUCED IN ANY FORM WHATSOEVER WITHOUT THE CONSENT OF C J SURVEYS LTD.

**C J SURVEYS LTD**  
 LAND | BUILDING | ENGINEERING  
 PROFESSIONAL MEASURED SURVEYS

Tel: 01638 591031 Mobile: 079645 775645  
 Web: www.cjsurveys.co.uk  
 Email: me@cjsurveys.co.uk

CLIENT: QUEENS COLLEGE

DATE	DRAWN	SHEET SIZE SCALE
JAN 2022	CJ	A1 1:50
PROJECT	GROUND, FIRST & SECOND FLOOR LAYOUT PLANS	DRAWING NO.
	No.79 ROYAL WAY, CAMBRIDGE	01622/RW/19