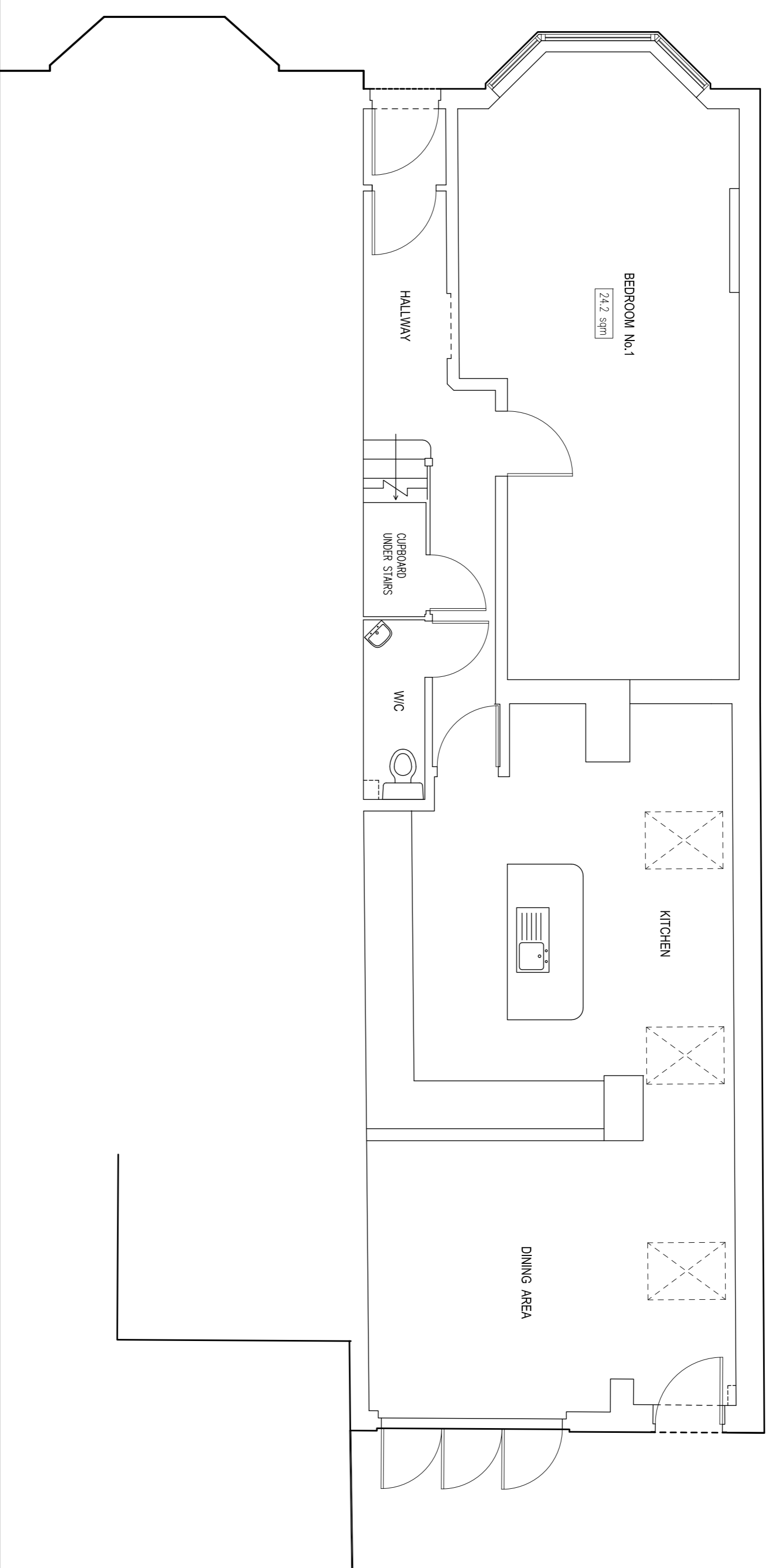
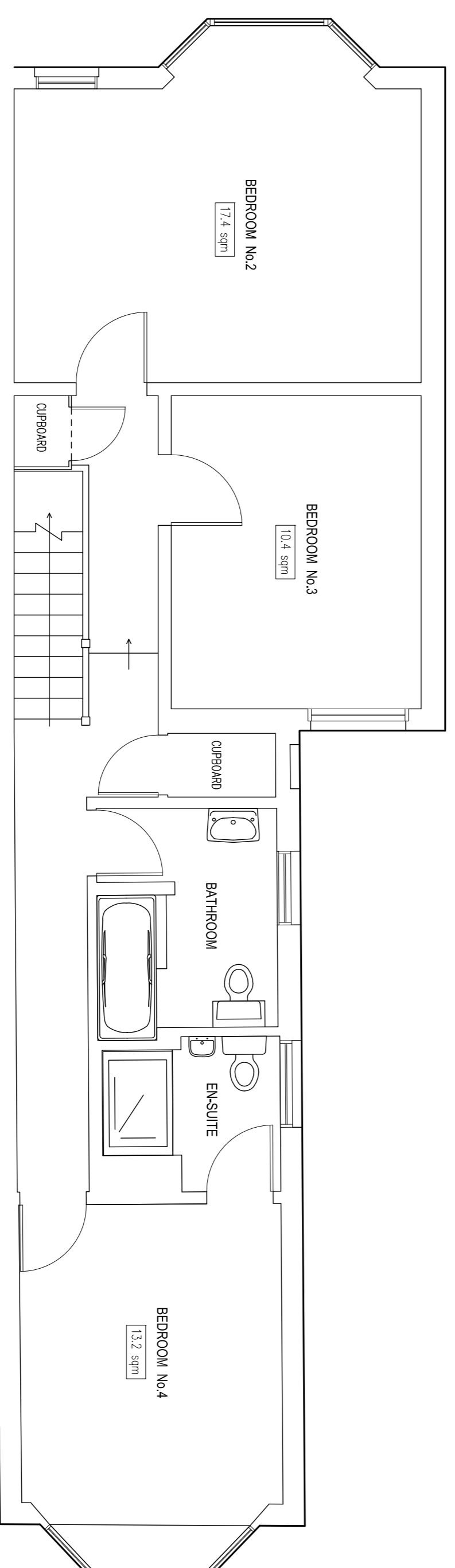


# GROUND FLOOR PLAN

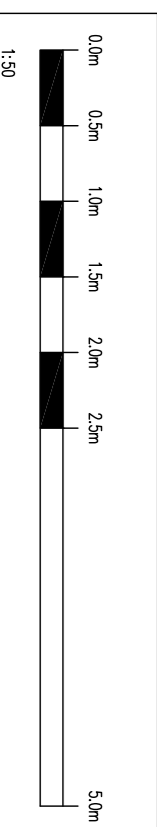
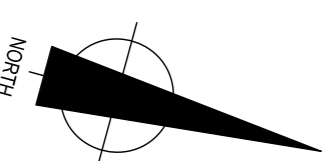


# FIRST FLOOR PLAN



**LEGEND**

▷	Telephone Socket	⬅	Key symbol for Direction
◀	Other Net Socket	⬆	Key symbol for Spring Ceiling
▽	TV Aerial Socket	⬇	Key symbol for 10 Ceiling Heights
⬆	Fire Alarm Break Glass	⬇	Key symbol for Floor to Ceiling Heights
⬆	Fire Alarm Sounder	⬇	Key symbol for Floor to Ceiling Heights
⬆	Fire Alarm Control	⬇	Key symbol for Floor to Ceiling Heights
⬆	Smoke Detector	⬇	Key symbol for Floor to Ceiling Heights
⬆	Illuminated Fire Exit Sign	⬇	Key symbol for Floor to Ceiling Heights
⬆	Single Supply Socket	⬇	Key symbol for Floor to Ceiling Heights
⬆	Double Supply Socket	⬇	Key symbol for Floor to Ceiling Heights
⬆	Single Gang Light Switch	⬇	Key symbol for Floor to Ceiling Heights
⬆	Double Gang Light Switch	⬇	Key symbol for Floor to Ceiling Heights
⬆	Radiator	⬇	Key symbol for Floor to Ceiling Heights



**AMENDMENTS**

REVISION	DATE	REMARKS
A	AUG 2019	FLOOR PLANS AMENDED FOLLOWING RENOVATIONS.
B	MAY 2021	GROUND FLOOR PLAN AMENDED & ROOM NAMES CHANGED.
C	MAY 2021	DATA CLEANED UP FOR PLAN CLARITY & ROOM AREAS ADDED.

**NOTES**

SURVEY TIED INTO NATIONAL GRID OSTN12 AND OSGM02 DATUM FOR HEIGHT USING GPS EQUIPMENT UTILIZING THE TRIMBLE VRS NOW SYSTEM FOR REAL TIME KINEMATIC (RTK) CORRECTIONS NATIONAL GRID SCALE FACTOR HAS NOT BEEN APPLIED TO THE SURVEY UNLESS SPECIFIED

DRAINAGE AND SERVICE INFORMATION SHOWN ON THIS SURVEY HAS BEEN OBTAINED BY VISUAL INSPECTION ONLY, ALTHOUGH ALL POSSIBLE CARE HAS BEEN TAKEN TO ENSURE THAT DETAILS SHOWN ARE CORRECT, WE ARE UNABLE TO ACCEPT ANY RESPONSIBILITY FOR COSTS ARISING OUT OF ANY ERRORS OR OMISSIONS. COPYRIGHT: THIS DRAWING MAY NOT BE REPRODUCED IN ANY FORM WHATSOEVER WITHOUT THE CONSENT OF C J SURVEYS LTD.

**C J SURVEYS LTD**  
 LAND | BUILDING | ENGINEERING  
 PROFESSIONAL MEASURED SURVEYS

CLIENT: QUEENS COLLEGE  
 CAMBRIDGE

DATE: MAR 2018  
 DRAWN: CJ  
 SHEET SIZE SCALE: A1 1:50  
 DRAWING NO.: 03418/F/P1 REV/C

PROJECT: FLOOR PLANS  
 51 OWLSTONE ROAD, CAMBRIDGE

Contact: Tel: 01638 591031 Mobile: 07945 779545  
 Web: www.cjsurveys.co.uk Email: me@cjsurveys.co.uk