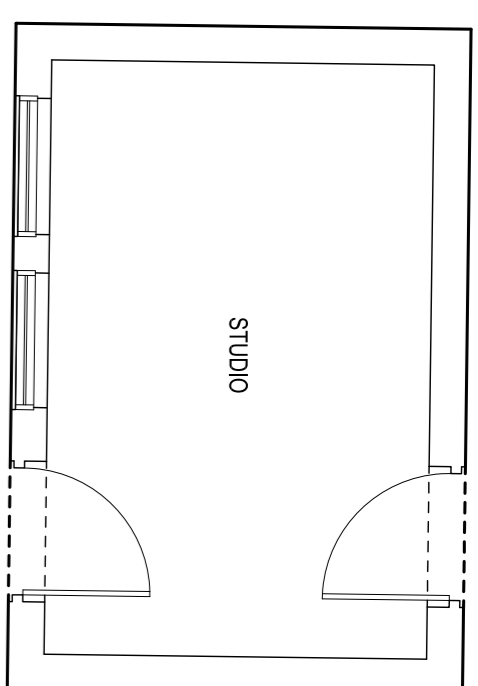


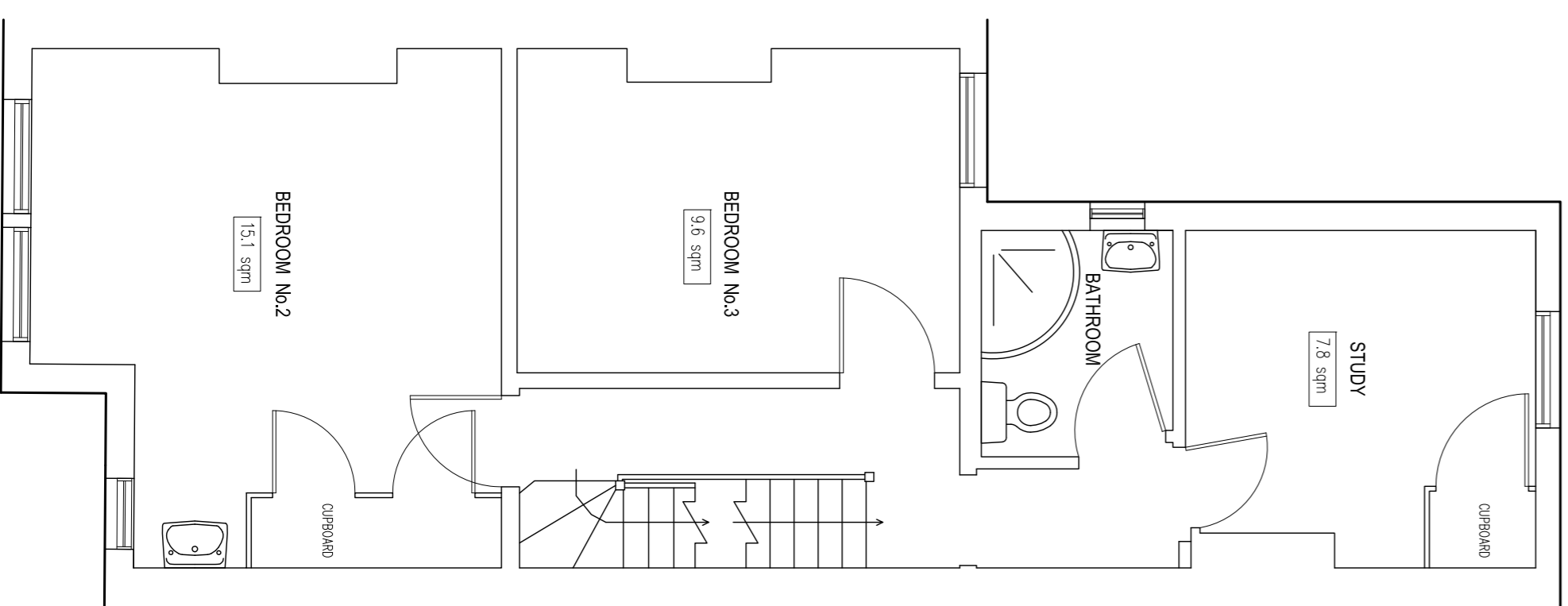
GROUND FLOOR PLAN

TOTAL FLOOR AREA = 9.9sqm



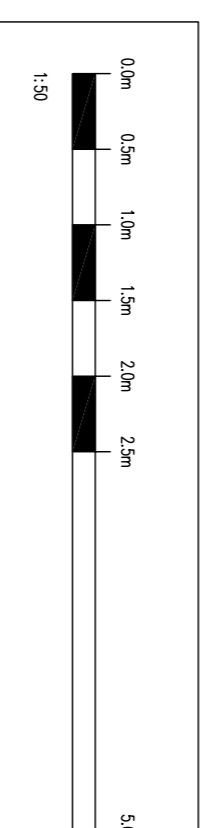
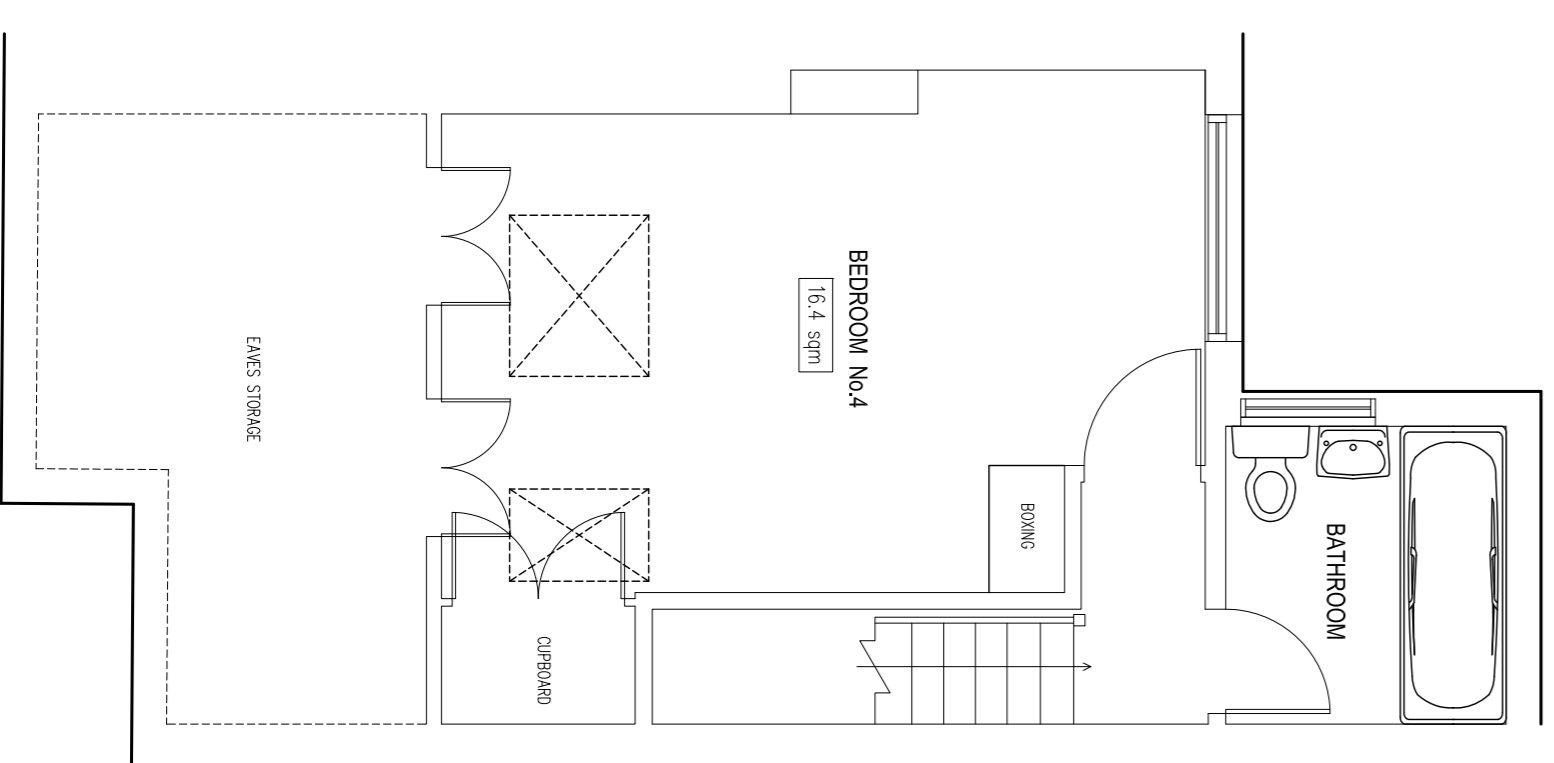
FIRST FLOOR PLAN

TOTAL FLOOR AREA = 45.4sqm



SECOND FLOOR PLAN

TOTAL FLOOR AREA = 24.8sqm



AMENDMENTS

| REVISION | DATE | REMARKS |
|----------|----------|----------------------|
| A | MAY 2021 | BEDROOM AREAS ADDED. |
| | | |
| | | |
| | | |

NOTES

SURVEY TIED INTO NATIONAL GRID OSTN02 AND OSGRID DATUM FOR HEIGHT USING GPS EQUIPMENT UTILIZING THE TRIMBLE VRS NOW SYSTEM FOR REAL TIME KINEMATIC (RTK) CORRECTIONS NATIONAL GRID SCALE FACTOR HAS NOT BEEN APPLIED TO THE SURVEY UNLESS SPECIFIED

DRAINAGE AND SERVICE INFORMATION SHOWN ON THIS SURVEY HAS BEEN OBTAINED BY VISUAL INSPECTION ONLY. ALTHOUGH ALL POSSIBLE CARE HAS BEEN TAKEN TO ENSURE THAT DETAILS SHOWN ARE CORRECT, WE ARE UNABLE TO ACCEPT ANY RESPONSIBILITY FOR COSTS ARISING OUT OF ANY ERRORS OR OMISSIONS. COPYRIGHT: THIS DRAWING MAY NOT BE REPRODUCED IN ANY FORM WHATSOEVER WITHOUT THE CONSENT OF C.J SURVEYS LTD.

C J SURVEYS LTD
 LAND | BUILDING | ENGINEERING
 PROFESSIONAL MEASURED SURVEYS

REF: 01838 581031 Mobile: 07945 775645
 Web: www.cjsurveys.co.uk Email: mail@cjsurveys.co.uk

CLIENT: QUEEN'S COLLEGE

| | | | | | | | |
|---------|---|-------|----|-------------|------------|-------|------|
| DATE | MAY 2021 | DRAWN | CJ | SHEET SIZE | A1 | SCALE | 1:50 |
| PROJECT | GROUND, FIRST & SECOND FLOOR LAYOUT PLANS | | | DRAWING NO. | 05621/MR20 | | |
| PROJECT | No.20 MARLOWE ROAD, CAMBRIDGE | | | REV/A | | | |